

# T-ONE

## 深圳市精钻智能制造有限公司

Shenzhen JingZuan Intelligent Manufacturing CO.,LTD

### T-ONE 夹头 & 导套

T-ONE CHUCK & GUIDE BUSH



### 深圳市精钻智能制造有限公司

地址 光明区马田街道石围社区大田洋工业区1号A栋101

电话: 86-755-27296210 27296211 27296212

传真: 86-755-27296213

Q Q: 2850995008

全国服务热线: 400-880-9912

### ShenZhen JingZuan Intelligent Manufacturing CO.,LTD

Add:No.101, Building A, Shiwei Datianyang Industrial Area, Matian Ave,  
Guangming Area, Shenzhen

TEL: 86-755-27296210 27296211 27296212

FAX: 86-755-27296213

Q Q: 2850995008

Hotline: +86 400-880-9912

★本画册最终解释权归本公司所有, 文中图片及文字仅供参考, 产品以实物为准, 如有变更, 恕不另行通知, 详情请致电0755-27296210/6211/6212 印刷日期: 2023/07/11

The album the final interpretation of the company, picture and text for the reference, the product in kind prevail, like has the change, without notice, please call 0755-27296210/6211/6212

## JZHZ-TONE 8-2000



## 公司简介

深圳市精钻精密五金工具有限公司成立于 2000 年，专业研发、生产、销售3A快速定位夹具系统、零点快速定位系统、球锁快速装夹系统及各类非标工装夹具；数控机床夹头、导套等机床配件。深圳公司建筑面积 3000 平方米。

公司拥有从德国、瑞士、美国、日本引进的先进生产设备。如德国 JUNG成型磨床、德国 ELB 高精度平面磨床、美国 MOORE 坐标磨床、瑞士 STUDER数控内外圆磨床、螺纹磨床、日本 OKUMA 加工中心、日本 OKUMA 数控车床、日本津上数控车床。公司建立了 20±0.5℃的恒温精磨房及高精度恒温计量中心，引进德国 ZEISS 三坐标测量仪、NIKON 投影仪、ZEISS 工具显微镜、TESA测高仪等高精度的检测设备。公司产品凭借品质稳定、性价比高，得到海内外客户的高度肯定。

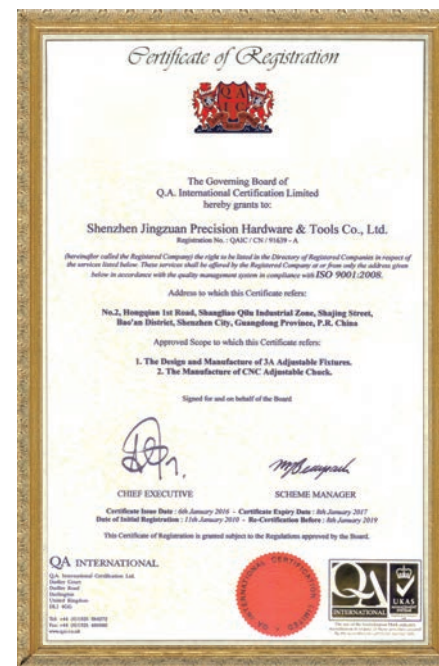
公司全面推行 ISO9001 质量管理体系，为生产高品质产品提供了强有力的保证。

## Company profile

Shenzhen Jingzuan Precision Hardware & Tools Co.Ltd was established in 2000 and specialized in designing,manufacturing and sales of 3A fast positioning JIG system,zero point system,ball lock shaft system and all kinds of Nonstandard JIG,CNC machine collet chuck, guide bush, and etc machine tool accessories.Shenzhen company covers an area of 3,000 square meters.

The company has the advanced production facility introduced from Germany,Switzerland, the USA and Japan, such as JUNG form grinding machine and ELB high-precision surface grinding machine of Germany, MOORE jig grinding machine of USA, SWISS STUDER CNC internal and external grinding machine and thread grinding machine of Switzerland, and Japan OKUMA machining center,OKUMA CNC lathe and TSUGAMI CNC machine of Japan. The company established constant-temperature grinding room of 20±0.5℃ and high-precision constant temperature measuring center, and introduced high-precision measuring equipment, such as German ZEISS coordinate measuring machine, NIKONV-16A projector, ZEISS tool microscope and TESA MICRO-HITE altimeter. The stable quality and high cost performance ratio are highly appreciated by domestic and overseas customers.

Our company fully implemented ISO 9001 quality management system and is a great asset to high-quality products of the company.



## 公司目标

我们T-ONE公司首要目标就是生产高性价比夹具来减少您的停机时间,在生产工艺方面,我们对原材料的选择和加工程序都有严格要求。

## 追求完美

T-ONE产品精度不仅超越了行业标准要求,而且质量可靠、耐用,我们现在能提供高精度产品(送料机、弹簧套筒、导套)用于传统数控车床和其它各种类型的机床。



## Our Corporate Mission

At T-ONE our Corporate Mission is to reduce your machine down-time by offering quality products at competitive prices.And within our production framework,we enforce a policy of strict selection of materials and finishing processes.

## Engineered To Perfection

Not only are our finished products durable,they surpassed the accuracy requirements of many Institute of Standards.We are now able to offer our newly developed,high precision products (feed fingers,spring collets,guide bushes etc) to be used on NC automatics,conventional cam lathe and other various types of dedicated machineries.



### T-ONE产品系列满足您的各种需求

T-ONE array of products to meet your needs of every kind

我司除了大多数其它的夹头和导套外，T-ONE有能力提供给您低成本夹头用于试样生产。

T-ONE is capable of supplying you with low-cost steel chucks for trial manufacturing in addition to most other kinds of chucks and bushes.

### 夹头 (COLLET CHUCK)

自由的选择来源于市场的变化。

我司夹头包括白钢夹头、钨钢夹头、主轴附轴夹头等产品。用于CNC自动车床和其它精密车床，您可以选择最适合您的一款。

Free choice from many variations

You can choose one best suited for your application from a large variety which includes the steel type, carbide type, main spindle type and back spindle with seal type for CNC autolathes, cam-operated auto lathes, bench lathes and other dedicated machinery.



### 导套 (GUIDE BUSH)

用途广泛性。

和夹头一样，导套也有钨钢和白钢等款式，同样适用于您的各种型号机床。

Broad Range Of Application

As with our collet chucks, there is a wide selection of carbide type and steel type guide bushes just right for your machines



### 精密检测仪器

Precision testing machine



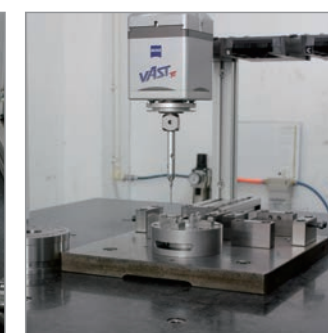
德国蔡司三坐标检测仪 ZEISS CONTURA  
ZEISS coordinate measuring machine



瑞士 TESA 测高仪 规格 0~600  
TESA MICRO-HITE altimeter Version:0-600



NIKON V-16A 投影仪  
NIKON V-16A projector



VAST 测头  
VAST probe



德国蔡司工具显微镜  
ZEISS tool microscope



万能工具显微镜  
ZEISS universal tool-measuring microscope



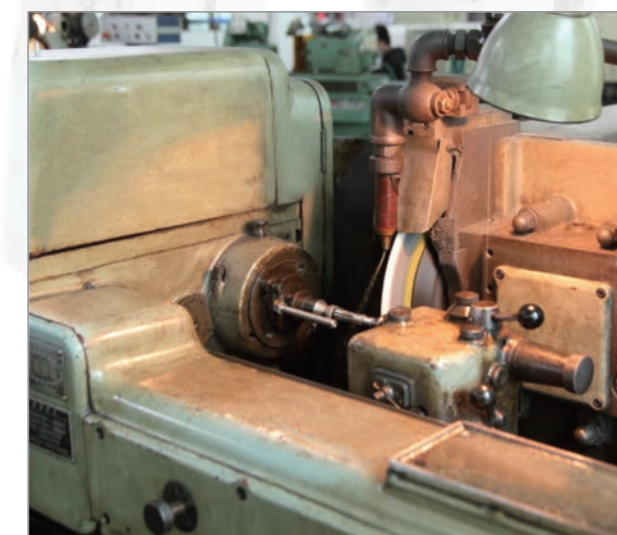
生产车间一角  
In the corner of the production workshop

精准，我们能做到  
Accuracy, we can do it.



完整的、一流的生产加工设备、专职的技术人员及优秀的生产工艺管控，保证了产品的交货期及配合客户应急的快速生产。

Complete, first-class processing equipment, professional technician and excellent manufacturing technique control, to ensure the product delivery and coordinate with emergency fast manufacture as customer request.



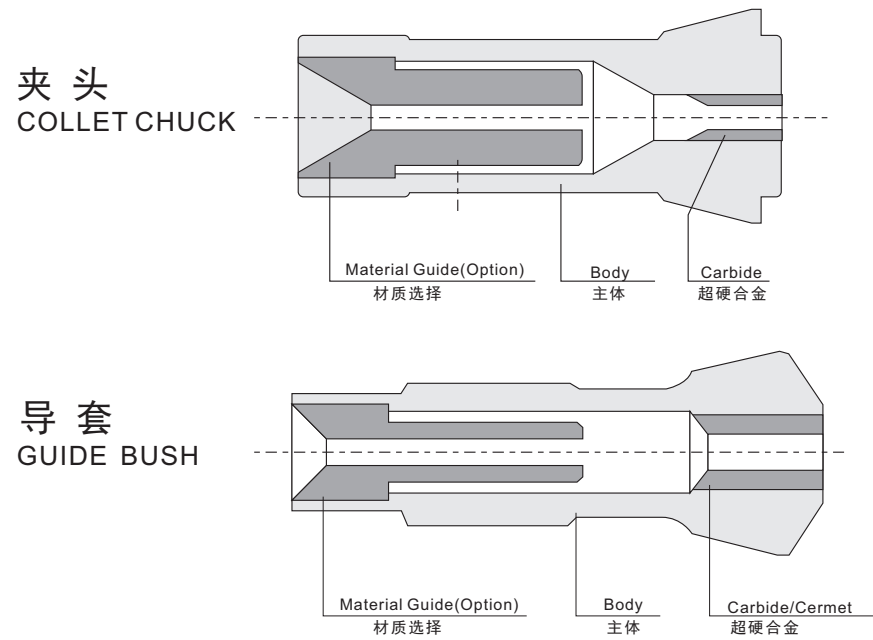
- ① 斯图特精磨加工 STUDER grinding machine
- ② MAKINO 加工中心 MAKINO machining center
- ③ 日本 OKUMA 车床 Japan OKUMA lathe
- ④ CNC 车床 CNC lathe
- ⑤ Thread machining
- ⑥ Internal and external grinding machine



我司夹头导套产品系列

The Lineup OF Our Collet Chucks and Guide Bushes

用于数控车床的夹头 Collet Chucks For CNC Auto Lathes	白钢、钨钢夹头 For Steel or Carbide Applications
用于数控车床的导套 Guide Bushes For CNC Auto Lathes	白钢、钨钢 For Steel, Carbide
附轴夹头 Attachment Collet Chucks	白钢、钨钢 For Steel or Carbide Apphcatlions
特殊夹头 Special Collet Chuks	钨钢 For Carbide Apphcatlions



精度测量是由带测量棒的千分表嵌入到夹头内部测量而来, 精度对照表。

The tolerance is to be measured by a dial-indicator with a measuring bar inserted in the chuck. Comparison Table: Tolerance.

尺寸范围 Size Category	检测点 Measuring Position	标准 Standard	高精度 High Precision
2-3	0.005	0.006	0.003
3-6	0.005	0.006	0.005
6-10	0.006	0.008	0.005
10-20	0.008	0.012	0.005

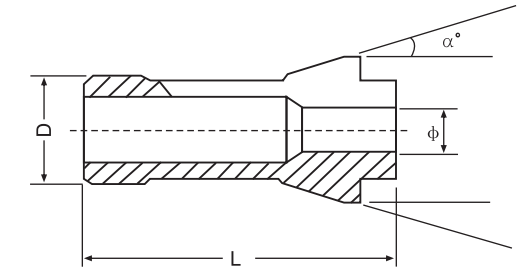
产品目录  
Product list

1 数控车床夹头 CNC Lathe Collet		Pages 10-11
2 数控车床导套 CNC Lathe Guide Bush		Pages 12
3 滚齿机夹头 Rolling gear machine chuck		Pages 13-14
4 磨刀机夹头 Pull-Type Collets		Pages 15-22

产品目录  
Product list

<p>5</p> <p>送料机 Feed Chuck</p>		<p>Pages 23</p>
<p>6</p> <p>延长杆、攻牙器 ER弹性筒夹 Extension rod ER Collet chuck Tapping machine</p>		<p>Pages 24-36</p>
<p>7</p> <p>承接非标订做 OEM Sevice available</p>		<p>Pages 37-38</p>

1. 钨钢夹头  
Dead length collets



(Brand)	型号 (Model)	D	L	$\alpha$
TSUGAMI 津上	T7 BM07 B007	10.2	47.3	20°
	NT17 NP17	23.8	62	15°
	NT16 NP16 NP12	23.8	62	15°
	BO123-II BO124-II BO125-II BO12 BS12	20	67	14°
	BO203-II BO204-II BO205-II BO18 BS18 S20	28	77	16°
新增型号: BM16 NP11 NT11 NP11D NT20 NP20 BM16 BS20 S25 BU26 BS26 BS32 BS26A BS25 BS26B BS25 G300				

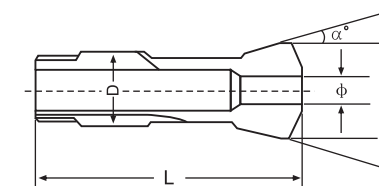
(Brand)	型号 (Model)	D	L	$\alpha$
CITIZEN 西铁城	F10 L10 D10 G10	15	45.5	15°
	A12 B12 F12 M12 K12 C12	16	62.0	16°
	L16 F16 G16 E16 C16 K16	26	67	15.25°
	M16 L20 F20 E20	26	67	15°
	L25 F25 E25	30	78	16°
	BL12	19.05	77.2	15°
	BL16	22	81	15°
	BL20	33	100	15°
新增型号: BL25 R04 R07 E32 G32 C32 L32 M32 VNC32 A32				

(Brand)	型号 (Model)	D	L	$\alpha$
STAR 星牌	JNC10 SNC10 RNC10	15	64	16°
	SH12 VNC12 SNC15 SJ15	18	67	15°
	SE16 SH16 RNC16 SR16 SA16	20.2	67	16°
	JNC20 SR20 VNC20	26	67	15°
	JNC32 JNC25 KNC25 KNC32	37	92	15°
新增型号: SW7 SJ8R大口 SH7 SR10 SA12 SE12 SL12 S13 KJR16 KJR25 KNC16 JNC16 KJR16大口 SNC18 SE16 SB16 ECAS16 KNC20 SNC15大口 ECAS20 SNC25 KJR25 ECAS32 SB-20 SR-10J SR-20J				

## 1. 钨钢夹头 Dead length collets

(Brand)	型号 (Model)	D	L	$\alpha$
<b>NOMURA</b> 野村	NS-P1053 NW-10K	16	53	15°
	NS-P1653 NS-P1253 WN16K	20	67	16°
	新增型号: P20 NS-P8410 NS-P8420 NN-10K NN-12 NN-13 SN-160 P2553 NN-16 NN-20 NN-25 NN-30 NSP8410 NSP8420			
(Brand)	型号 (Model)			
<b>TODAYCNC</b> 今日标准	新增型号: TCKZ-16CO TCKZ-16C3 TCKZ-16T/N TCKZ-20C3 TCKZ-16S TCKZ-20S TCKZ-25C TCKZ-25D TCKZ-32C TCKZ-32D TCKJ-35 TCKM-32 TCKM-32S TCM-42 TCKF-35 TCKF-45 TMKW-300			
(Brand)	型号 (Model)	D	L	$\alpha$
<b>STROHM</b>	M125 M105	15	64	16°
(Brand)	型号 (Model)	D	L	$\alpha$
<b>RIKEN</b> 理研	SAD25	30	66	15°
	SAD40	48	84	15°
(Brand)	型号 (Model)	D	L	$\alpha$
<b>MIYANO</b> 宫野	171E(BNC34)	42	94	15°
	173E(BNC42)	48	94	15°
	BN7-16	28	70	15°
	147E	27	73.5	15°
	140E	22	55	15°
	176E	56	94	15°
	新增型号: BNC50 148E 163E 177E 185E 144E 161E BNC12 BNC20 BNC75-2 BND34 BND42 BND51 BC-D200 MLA-20D MLA-30D B6-20 BJ20 BNE34 BNE51 BNJ34 BNJ42 AL-S25			
(Brand)	型号 (Model)	D	L	$\alpha$
<b>TORNOS</b> 瑞士	M7 MS7	10	47.5	20°
	R10 M10	13	64	16°
	R16	20	67	16.25°
	DECO2000-7	13	64	16°
	DECO2000-10	13	64	16°
	DECO2000-13/16 ENC162	20	54	15°
	DECO2000-20 ENC163	25	77	16°

## 2. 钨钢导套 Dead Guide Bush

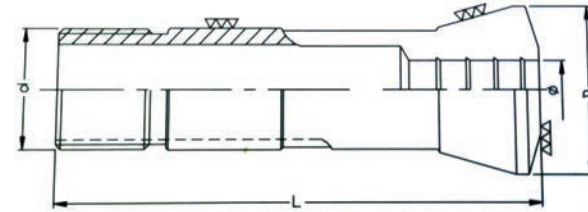


(Brand)	型号 (Model)	D	L	$\alpha$
<b>TSUGAMI</b> 津上	T7 BM07 B007	10.2	52.3	16°
	NT17 NP17	23	72	16°
	NT16 NP16	23	72	16°
	BO123-II BO124-II BO125-II BO12 BS12	22	70.5	16°
	BO203-II BO204-II BO205-II BO18 BS18 S20	30	70	16°
	BM16	30	75	15°
	新增型号: NP11 NT11 NP11D NT20 NP20 BS20 BU20 S25 BU26 BS26 BS32 NT32 NP32 A32 BS26A BS25 BS26B BS25			
(Brand)	型号 (Model)	D	L	$\alpha$
<b>CITIZEN</b> 西铁城	F10 L10 D10 G10	16	50	16°
	B12 F12 M12 K12 C12	18	60	30°
	L16 F16 G16 E16 C16 K16	30	59	15.75°
	M16 L20 F20 E20	30	59	16°
	L25 F25 E25	34	87.5	10°
	新增型号: BL12 BL16 BL20 BL25 R04 R07 E32 G32 C32 L32 M32 VNC32			
(Brand)	型号 (Model)	D	L	$\alpha$
<b>STAR</b> 星牌	JNC10 SNC10 RNC10	16	50	16°
	SH12 VNC12 SNC15 SJ15	21	57.5	12.5°
	SE16 SH16 RNC16 SR16 SA16	22	68	16°
	JNC20 SR20 VNC20 KNC20	30	59	16°
	新增型号: JNC32 JNC25 KNC25 KNC32 SW7 SJ8R太口 SH7 SR10 SA12 SE12 SL12 S13 KJR16 KJR25 KNC16 JNC16 KJR16太口 SNC18 SE16 SB16 ECAS16 SNC15太口 ECAS20 SNC25 KJR25 L32 M32			
(Brand)	型号 (Model)	D	L	$\alpha$
<b>NOMURA</b> 野村	NS-P1053 NW-10K	16	63	16°
	NS-P1653 NS-P1253 WN16K	22	70.5	16°
	新增型号: P20 NS-P8410 NS-P8420 NN-10K NN-12 NN-13 SN-160 P2553 NN-16 NN-20 NN-25 NN-30 NSP8410 NSP8420 NN20KF NNCP2553 NN25K			
(Brand)	型号 (Model)	D	L	$\alpha$
<b>STROHM</b>	M125 M105	18	60	30°
(Brand)	型号 (Model)	D	L	$\alpha$
<b>TORNOS</b> 瑞士	M7 MS7	13	68	30°
	R10 M10	16	59	16°
	R16	22	68	16°
	DECO2000-7	16	59	16°
	DECO2000-10	16	59	16°
	DECO2000-13/16 ENC162	24	61	30°
	DECO2000-20 ENC163	28	81	30°



## 2. 其它型号自动车床电脑车床钨钢嗦咀

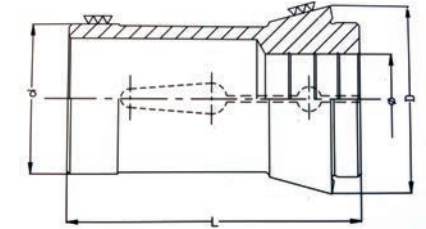
Other types of CNC Lathe carbide dead length collets



(Brand)	型号 (Model)	D	L	MaxΦ	类型 (Type)
江黑	15#, 名阳, 洽群, 铸峰, 永和. . . . .	Φ19.0	76	Φ15.0	精密筒夹
	20#, 名阳, 洽群, 铸峰, 永和. . . . .	Φ25.0	102	Φ20.0	精密筒夹
YB	25#, 永和, 专用机. . . . .	Φ32.0	102	Φ25.0	精密筒夹
	32#, 永和, 专用机. . . . .	Φ39.0	119	Φ32.0	精密筒夹
	42#, 永和. . . . .	Φ52.0	137	Φ42.0	精密筒夹
FUJI	0825#, 富士, 王主, 源昇. . . . .	Φ16.0	72.5	Φ12.0	精密筒夹
	1820#, 富士. . . . .	Φ28.0	98	Φ20.0	精密筒夹
	1825#, 富士, 名阳, 王主. . . . .	Φ35.0	124	Φ25.0	精密筒夹
	32#, 名阳, 王主. . . . .	Φ43.0	137	Φ32.0	精密筒夹
DAIWA	10#, 大和. . . . .	Φ15.0	61.5	Φ10.0	精密筒夹
	10#, 大和, 王主. . . . .	Φ17.0	68	Φ12.0	精密筒夹
	15#, 大和. . . . .	Φ25.0	85	Φ17.0	精密筒夹
	20#, 大和. . . . .	Φ25.0	102.5	Φ20.0	精密筒夹
MAZAK42#	马扎克电脑车床, 数控攻牙机	Φ55.0	110	Φ42.0	精密筒夹
INDEX六轴	德国电脑自动车床	Φ46.0	120	Φ42.0	精密筒夹
全能	25#桌上车床	Φ32.0	103	Φ25.0	精密筒夹
5C	电脑车床 工具车床	Φ31.75	87	Φ25.0	精密筒夹
16C	美国哈挺电脑车床	Φ48.0	117	Φ42.0	精密筒夹
20C	美国哈挺电脑车床	Φ60.0	163	Φ52.0	精密筒夹

## 3. 其它型号自动车床电脑车床钨钢嗦咀

Other types of CNC Lathe carbide dead length collets



(Brand)	型号 (Model)	D	L	MaxΦ	类型 (Type)
TRAUB15#	140E德国特劳普, 利高. . . . .	Φ22.0	55	Φ15.0	精密筒夹
TRAUB20#	148E德国特劳普, 利高. . . . .	Φ28.0	70	Φ20.0	精密筒夹
TRAUB25#	161E德国特劳普, 利高. . . . .	Φ32.0	75	Φ25.0	精密筒夹
INDEX25#	162E德国特劳普. . . . .	Φ35.0	70	Φ25.0	精密筒夹
INDEX30#	163E德国特劳普. . . . .	Φ35.0	80	Φ30.0	精密筒夹
利高32#	164E德国特劳普, 利高. . . . .	Φ38.1	108	Φ32.0	精密筒夹
INDEX36#	171E德国特劳普, OKUMA. . . . .	Φ42.0	94	Φ36.0	精密筒夹
INDEX42#	173E德国特劳普, 伍将. . . . .	Φ48.0	94	Φ42.0	精密筒夹
INDEX52#	177E德国特劳普, 伍将. . . . .	Φ58.0	94	Φ52.0	精密筒夹
INDEX60#	185E德国特劳普. . . . .	Φ66.0	110	Φ60.0	精密筒夹
INDEX80#	193E德国特劳普. . . . .	Φ90.0	130	Φ80.0	精密筒夹
利高65#	利高. . . . .	Φ72.0	142	Φ65.0	精密筒夹
C-32#	缙鋸, 洽群. . . . .	Φ40.0	104	Φ33.0	精密筒夹
C-44#	缙鋸, 朝乾. . . . .	Φ54.0	87	Φ45.0	精密筒夹
王主20#	王主. . . . .	Φ28.0	82	Φ20.0	精密筒夹
SD-25#	昇岱, 洽群. . . . .	Φ34.0	82	Φ25.0	精密筒夹
SD-32#	昇岱, 洽群. . . . .	Φ42.0	95	Φ32.0	精密筒夹
SD-45#	昇岱. . . . .	Φ56.0	120	Φ45.0	精密筒夹
SD-52#	昇岱. . . . .	Φ61.0	120	Φ52.0	精密筒夹



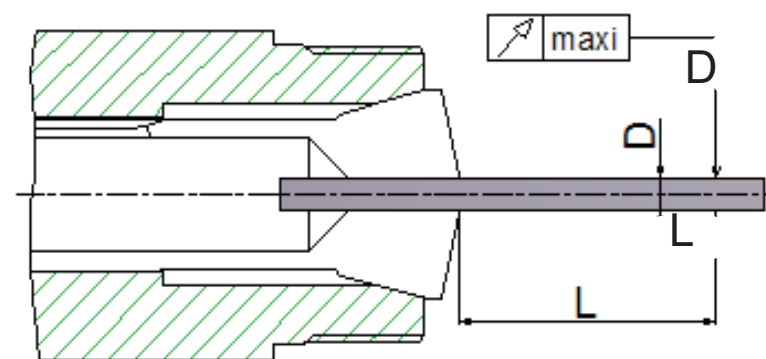


W20 W25

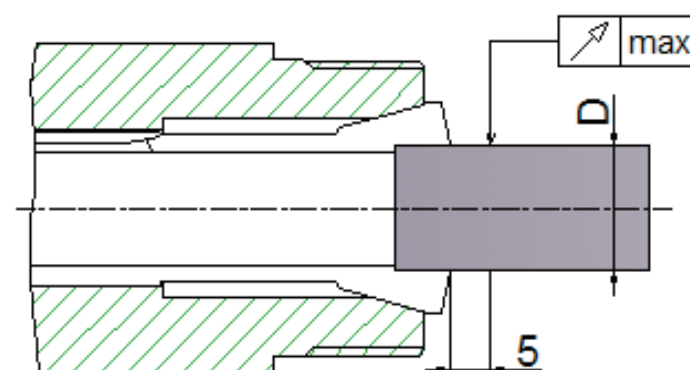
专业生产数控磨刀机夹头，主要配机床设备厂家  
Specializing in CNC pull-type collets, which is mainly suitable for ...

Walter、Agathon、Anca、Cincinnati、Ewag...

4. 磨刀机  
Pull-type collets



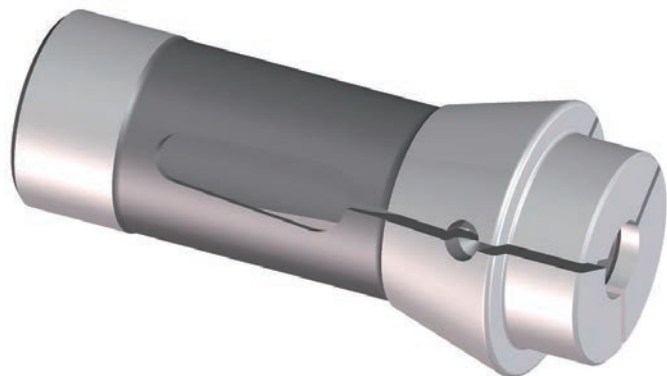
通孔  
Through bore



台阶孔  
Step bore

D		L	最大跳动 (标准级) Maxi(standard)	最大跳动 (精密级) Maxi UP(Highest precision)
>	≤			
	0.5	1	0.010	—
0.5	1	3	0.010	0.005
1	1.6	6	0.010	0.005
1.6	3	10	0.015	0.008
3	6	16	0.015	0.008
6	10	25	0.015	0.008
10	18	40	0.020	0.010
18	24	50	0.020	0.010
24	31	60	0.020	0.010

## 5. F型夹头 Dead length collets



### 夹头夹紧方式:

- 1.通过螺母将夹头推入夹头座实现夹紧
- 2.通过螺母推动夹头周围的套筒实现夹紧

通常情况下,夹头直径8.99mm以下是光滑的,直径9mm及以上圆孔内带有沟槽。

成型孔大多数是光滑的,从14mm开始孔内有沟槽。

其他形状(锯齿形等)需要更多详细信息,请和我们联系。

### 备注

在夹头松开状态时,F型夹头孔径大于公称直径。

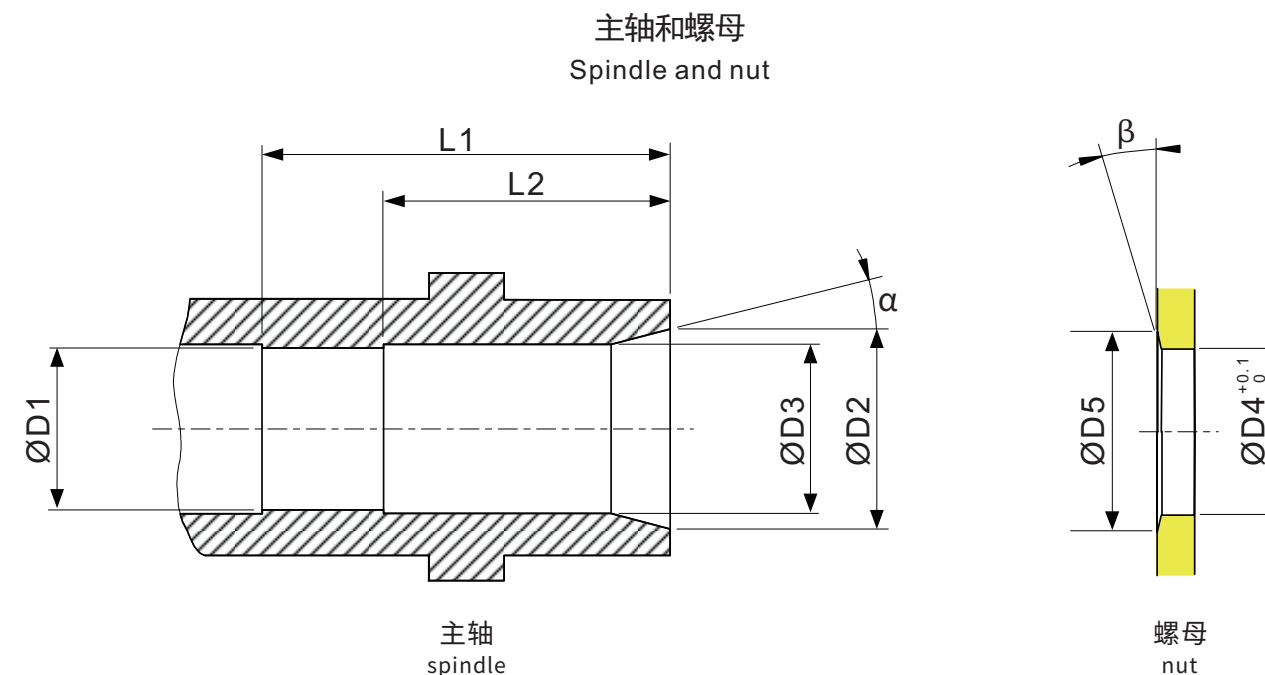
Clamping is achieved either by pushing the collet into its seat by means of a nut, or by pushing a sleeve around the collet taper towards the lock nut.

Normally, the round bores are smooth up to 8,99 mm diameter, and from 9 mm and larger bores are grooved. The profiled bores are smooth, with some exceptions where the bore is grooved from 14 mm. For other variants (serrated, etc...) and more information, please contact us.

### Remark

In released position, Dead Length Collets open above the nominal diameter.

## 5. F型夹头接口尺寸 Dimensions for collet seating



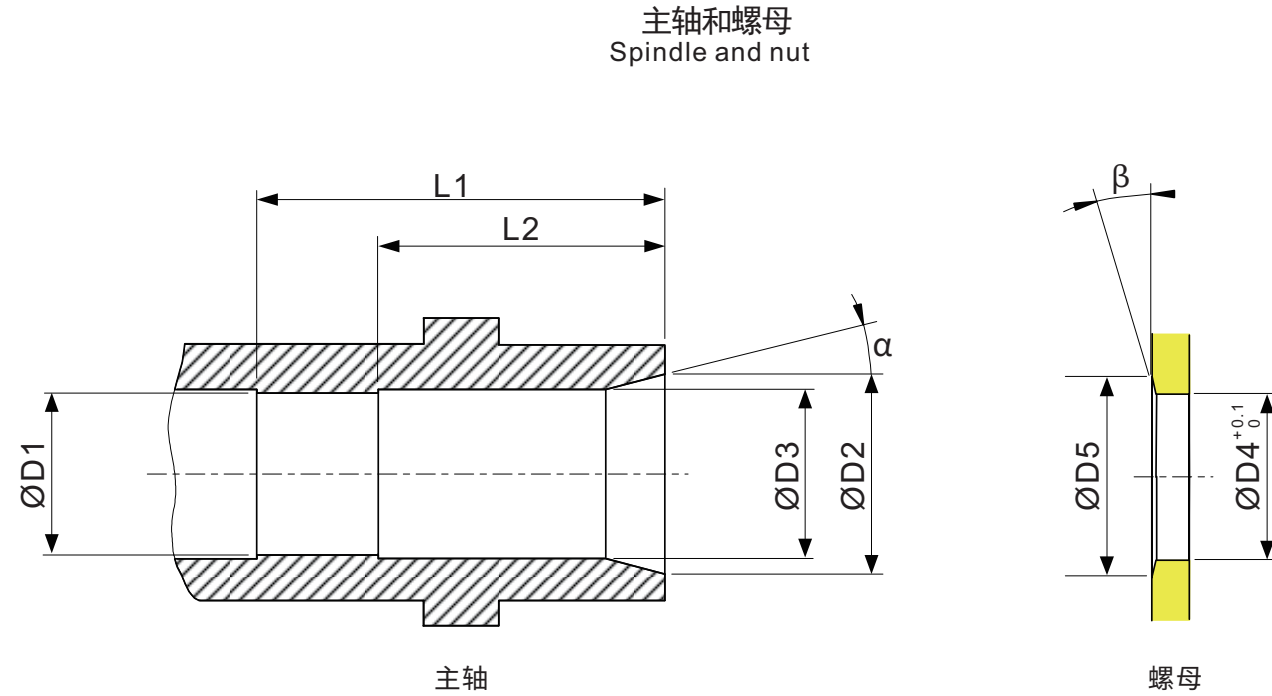
参数:表面硬化0.4-0.6mm,热处理58-62HRC

Parameter : case hardened 0,4-0,6 mm, heat treat 58-62 HRC

型号 Model	D1	D2	D3	D4	D5	L1	L2	α	β
F4.5 76-76	4.5 <sup>+0.005</sup> <sub>0</sub>	6.3 <sup>0</sup> <sub>+0.05</sub>	-	4.8	-	16	-	15° <sup>-3'</sup> <sub>-10'</sub>	-
F6 76-599	6 <sup>+0.005</sup> <sub>0</sub>	9.5 <sup>0</sup> <sub>+0.05</sub>	6.5	6.5	-	27	18	15° <sup>-3'</sup> <sub>-10'</sub>	-
F7 76-66	7 <sup>+0.005</sup> <sub>0</sub>	10.5 <sup>0</sup> <sub>+0.05</sub>	7.5	7.5	11	23	17	15° <sup>-10'</sup> <sub>-20'</sub>	6°
F7 76-206	7 <sup>+0.005</sup> <sub>0</sub>	10.3 <sup>0</sup> <sub>+0.05</sub>	7.5	7.5	-	23	16	15° <sup>-10'</sup> <sub>-20'</sub>	-
F8 76-577	8 <sup>+0.005</sup> <sub>0</sub>	11.8 <sup>0</sup> <sub>+0.05</sub>	8.2	8.6	-	38	26	16° <sup>-10'</sup> <sub>-20'</sub>	-
F8 76-1844	8 <sup>+0.005</sup> <sub>0</sub>	10.8 <sup>0</sup> <sub>+0.05</sub>	8.5	8.5	-	16.5	11.5	15° <sup>-3'</sup> <sub>-8'</sub>	-
F10 76-86	10 <sup>+0.005</sup> <sub>0</sub>	15.8 <sup>0</sup> <sub>+0.05</sub>	10.5	10.7	-	41	31	20° <sup>-10'</sup> <sub>-20'</sub>	-
F10 76-1178	10 <sup>+0.005</sup> <sub>0</sub>	15.8 <sup>0</sup> <sub>+0.05</sub>	10.5	10.7	16.5	42	31	20° <sup>-10'</sup> <sub>-20'</sub>	12°
F12 76-78	12 <sup>+0.005</sup> <sub>0</sub>	17.8 <sup>0</sup> <sub>+0.05</sub>	12.2	12.8	18.5	40	30	15° <sup>-10'</sup> <sub>-20'</sub>	5°
F12 76-578	12 <sup>+0.005</sup> <sub>0</sub>	17.8 <sup>0</sup> <sub>+0.05</sub>	12.5	12.8	-	56	41	16° <sup>-10'</sup> <sub>-20'</sub>	-



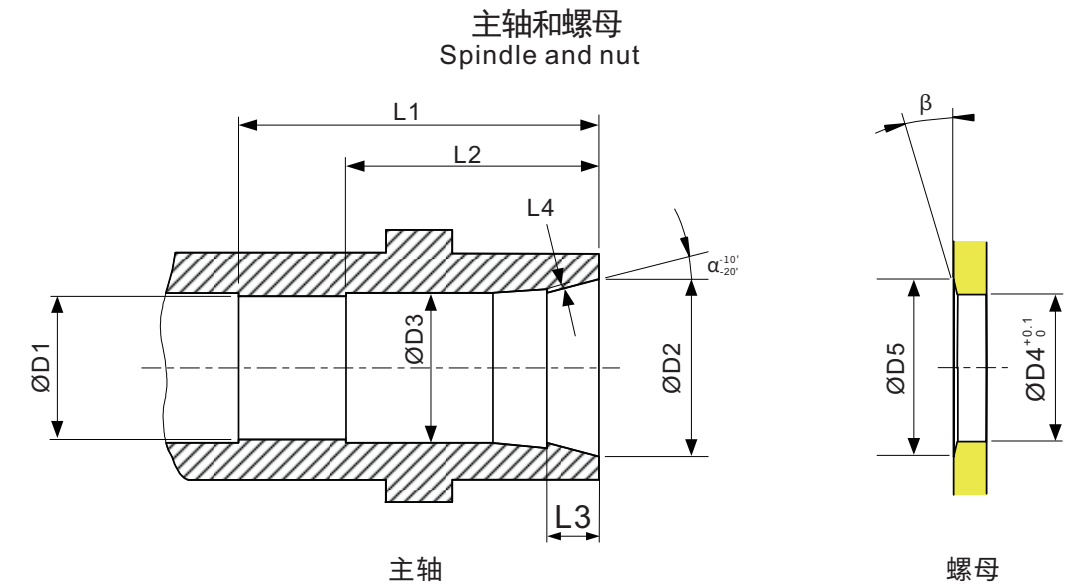
5. F型夹头接口尺寸  
Dimensions for collet seating



参数:表面硬化0.4-0.6mm, 热处理58-62HRC  
Parameter : case hardened 0,4-0,6 mm, heat treat 58-62 HRC

型号 Model	D1	D2	D3	D4	D5	L1	L2	α	β
F13 76-357	13 <sup>+0.01</sup> <sub>+0.004</sub>	18.7 <sup>0</sup> <sub>+0.05</sub>	13.5	13.8	-	58	41	16° <sup>-10'</sup> <sub>-20'</sub>	-
F14 76-98	14 <sup>+0.01</sup> <sub>+0.004</sub>	17.7 <sup>0</sup> <sub>+0.05</sub>	14.5	14.7	18.5	41	30	13° <sup>-10'</sup> <sub>-20'</sub>	12°
F15 76-358	15 <sup>+0.01</sup> <sub>+0.004</sub>	21.6 <sup>0</sup> <sub>+0.05</sub>	15.5	16	-	42	31	20° <sup>-10'</sup> <sub>-20'</sub>	-
F15 76-580	15 <sup>+0.01</sup> <sub>+0.004</sub>	20.8 <sup>0</sup> <sub>+0.05</sub>	15.2	16	-	58	40	16° <sup>-10'</sup> <sub>-20'</sub>	-
F16 76-104	16 <sup>+0.01</sup> <sub>+0.004</sub>	21.7 <sup>0</sup> <sub>+0.05</sub>	16.2	17	-	51	38	15° <sup>-10'</sup> <sub>-20'</sub>	-
F16 76-1076	16 <sup>+0.01</sup> <sub>+0.004</sub>	20.7 <sup>0</sup> <sub>+0.05</sub>	16.5	17	-	58	41	16° <sup>-3'</sup> <sub>-8'</sub>	-
F20 76-87	20 <sup>+0.01</sup> <sub>+0.004</sub>	27.8 <sup>0</sup> <sub>+0.05</sub>	21.5	22	-	61	43	16° <sup>-10'</sup> <sub>-20'</sub>	-
F20 76-201	20 <sup>+0.01</sup> <sub>+0.004</sub>	25.3 <sup>0</sup> <sub>+0.05</sub>	21	20.5	-	49	38	15° <sup>-10'</sup> <sub>-20'</sub>	-
F22 76-71	22 <sup>+0.01</sup> <sub>+0.004</sub>	29±0.05	23	22.5	30.2	49	38	15° <sup>-10'</sup> <sub>-20'</sub>	10°

5. F型夹头接口尺寸  
Dimensions for collet seating

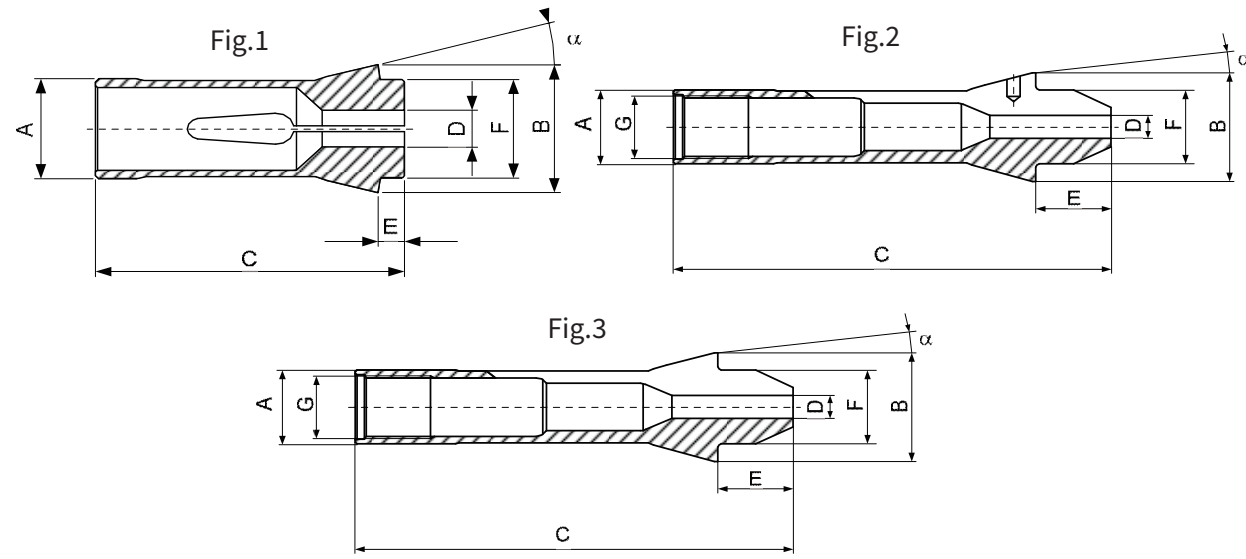


参数:表面硬化0.4-0.6mm, 热处理58-62HRC  
Parameter : case hardened 0,4-0,6 mm, heat treat 58-62 HRC

型号 Model	D1	D2	D3	D4	D5	L1	L2	L3	L4	α	β
F25 76-64	25 <sup>+0.01</sup> <sub>+0.004</sub>	34.2±0.05	26	28	-	66	50	8	0.4	16°	-
F27 76-22	26.98 <sup>+0.01</sup> <sub>+0.004</sub>	37.2±0.05	28	31	38.5	66	50	8	0.4	15°	7°
F30 76-63	30 <sup>+0.01</sup> <sub>+0.004</sub>	41.2±0.05	31	35	-	69	52	8	0.4	16°	-
F30 76-101	30 <sup>+0.01</sup> <sub>+0.004</sub>	37.6±0.05	31	33	-	58	44	8	0.4	15°	-
F32 76-221	32 <sup>+0.015</sup> <sub>+0.005</sub>	44±0.05	33	35	45.5	66	50	10	0.4	15°	10°
F35 76-94	35 <sup>+0.015</sup> <sub>+0.005</sub>	47±0.05	36	39	48.5	71	55	10	0.4	15°	10°
F37 76-740	37 <sup>+0.015</sup> <sub>+0.005</sub>	46.2±0.05	38	41	-	80.5	54.5	10	0.4	16°	-
F38 76-72	38.08 <sup>+0.015</sup> <sub>+0.005</sub>	48.4±0.05	39	39	49.5	103	83	12	0.4	15°	6°
F42 76-99	42 <sup>+0.015</sup> <sub>+0.005</sub>	54±0.05	43	43.5	55.5	85	68	12	0.4	15°	10°
F48 76-81	48 <sup>+0.015</sup> <sub>+0.005</sub>	59.3±0.05	49	51	60.5	98	63	12	0.4	15°	10°
F66 76-359	66 <sup>+0.015</sup> <sub>+0.005</sub>	83±0.05	67	74	84.5	101	80	12	0.4	15°	10°

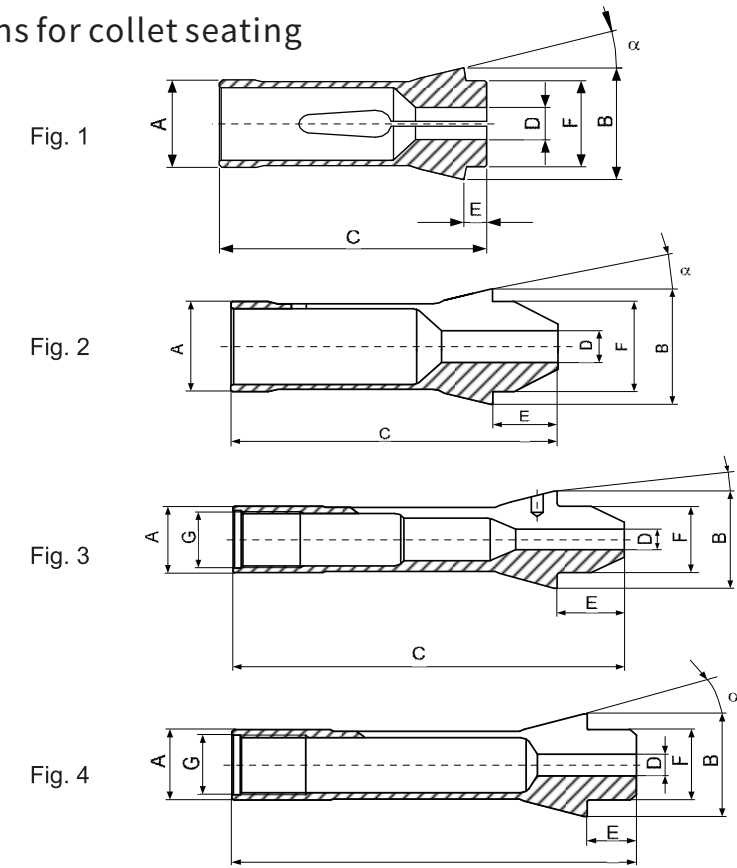
夹头座的其他尺寸可根据要求提供  
Other dimensions for collet seatings are available on request.

5. F型夹头  
Dimensions for collet seating



型号 Model	编号 Number	A	B	C	E	F	G	α	D min-max			图 Fig
									○	□	⬡	
F4.5	76-76	4.5	6.75	17.25	1.8	4.5	-	15°	0.3-4.0			1
F6	76-599	6	10	30	3	6	-	15°	0.3-4.5			1
F7	76-66	7	10.7	26	2.9	7	-	15°	0.3-5.0			1
	76-206	7	10.5	26	3	7	-	15°	0.3-5.5			1
F8	76-577	8	12	42	4.5	8	-	16°	0.3-6.35			1
	76-1844	8	11	19	2	8	-	15°	0.3-6.5			1
	76-2024 10)76-577	8	12	47.5	10	8	M6x0.5	16°	0.3-4.5			3
F10	76-86	10	15.5	47.5	5.5	10	-	20°	0.3-8.0	1.0-5.0	1.0-6.5	1
	76-1178	10	16	46	4	10	-	20°	0.3-7.0			1
	76-2021 10)76-86	10	15.5	52	10	10	M8x0.5	20°	0.3-7.0 不要槽-smooth	1.0-5.0	1.0-6.0	2
F12	76-78	12	18.1	44.5	4.3	12	-	15°	0.3-10.0	1.0-7.0	1.0-8.5	1
	76-578	12	18	64	6	12	-	16°	0.3-10.0			1

5. F型夹头  
Dimensions for collet seating



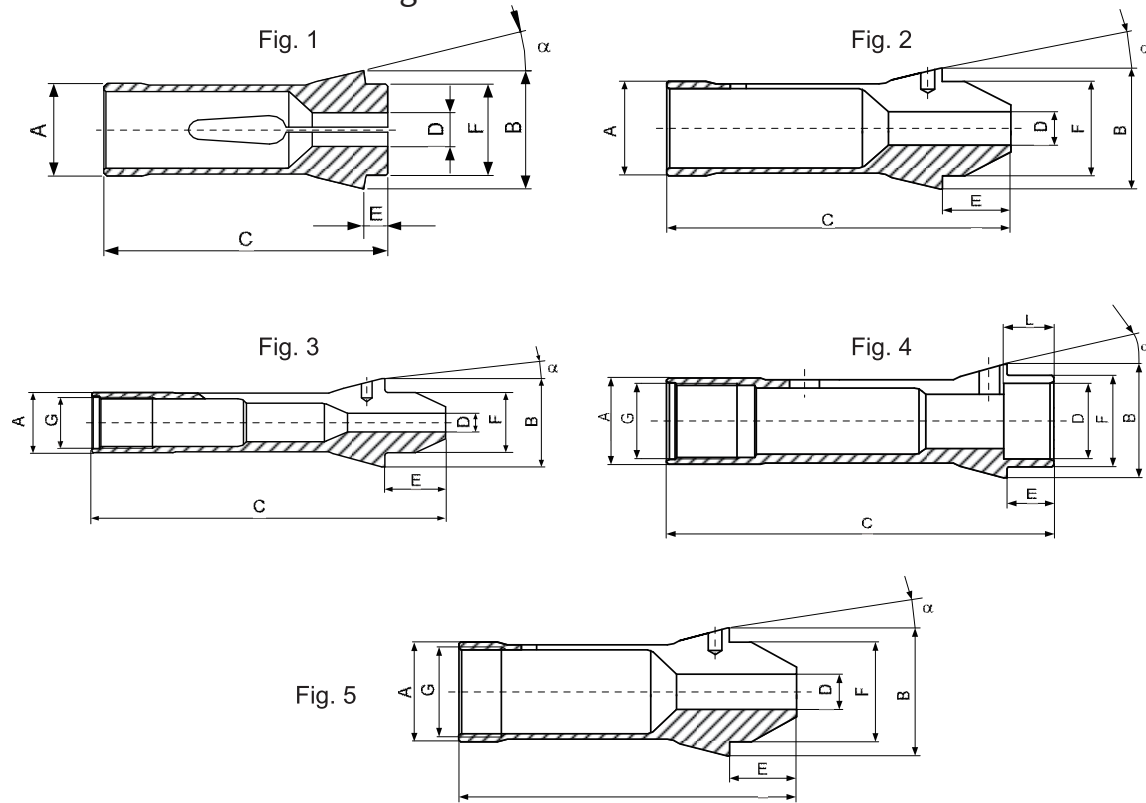
型号 Model	编号 Number	A	B	C	E	F	G	α	D min-max			图 Fig
									○	□	⬡	
F13	76-357	13	19	64	6	13	-	16°	0.3-10.0	1.0-7.0	1.0-8.0	1
F13	76-93019 10)76-357	13	19	66	8	13	M11x0.75	16°	0.3-10.0 不要槽-smooth			4
	76-2014 10)76-357	13	19	70	12	13	M11x0.75	16°	0.3-8.0 不要槽-smooth	1.0-5.7	1.0-7.0	3
F14	76-98	14	18	46	4	14	-	13°	0.3-11.2	1.0-8.0	1.0-9.7	1
F15	76-358	15	22	47	5	15	-	20°	0.3-11.11	1.0-7.54	1.0-9.52	1
	76-580	15	21	64	6	15	-	16°	0.3-12.7	1.0-9.0	1.0-11.0	1
	76-2022 10)76-580	15	21	71	13	15	-	16°	0.3-11.11 不要槽-smooth	1.0-7.8	1.0-9.6	2
F16	76-104	16	22	55	5	16	-	15°	0.3-13.0	1.0-9.2	1.0-11.3	1
	76-1076	16	21	64	6	16	-	16°	0.3-13.0	1.0-9.2	1.0-11.3	1

标准孔(圆形,方形,六角形)根据价目表.其他孔径按需确认。  
Standard bores(round,suqare,hexagonal)accoring to price list,other bores on request.  
10)基本款 - Basic item



### 5. F型夹头

Dimensions for collet seating



型号 Model	编号 Number	A	B	C	E	F	G	α	D min-max			图 Fig
									○	□	⬡	
F16	76-830 10)76-1076	16	21	66	8	16	M14x0.75	16°	0.3-13.0 不要槽-smooth	1.0-9.2	1.0-11.3	3
	76-2015 10)76-1076	16	21	71	13	16	M14x0.75	16°	0.3-12.0 不要槽-smooth	1.0-8.5	1.0-10.4	3
	76-2090 19)&26)	16	21	66	8	17	M14x0.75	16°	13.01-15.0 L=12mm max			4
F20	76-87	20	28	67	7	21	-	13°	0.5-17.0	1.0-11.5	1.0-14.0	1
	76-201	20	26	54	5	19	-	20°	0.5-16.5	1.0-12.0	1.0-14.0	1
	76-2016 10)76-201	20	26	62	13	19	M18x1	16°	0.5-15.0 不要槽-smooth	1.0-10.6	1.0-13.0	5
	76-2017 10)76-87	20	28	75	15	21	-	16°	0.5-16.0 不要槽-smooth	1.0-11.3	1.0-13.9	2
	76-2027 10)76-87	20	28	80	20	21	-	15°	0.5-9.0			2

标准孔(圆形, 方形, 六角形)根据价目表。其他孔径按需确认。

Standard bores(round,suqare,hexagonal)accoring to price list,other bores on request.

10)基本款 - Basic item

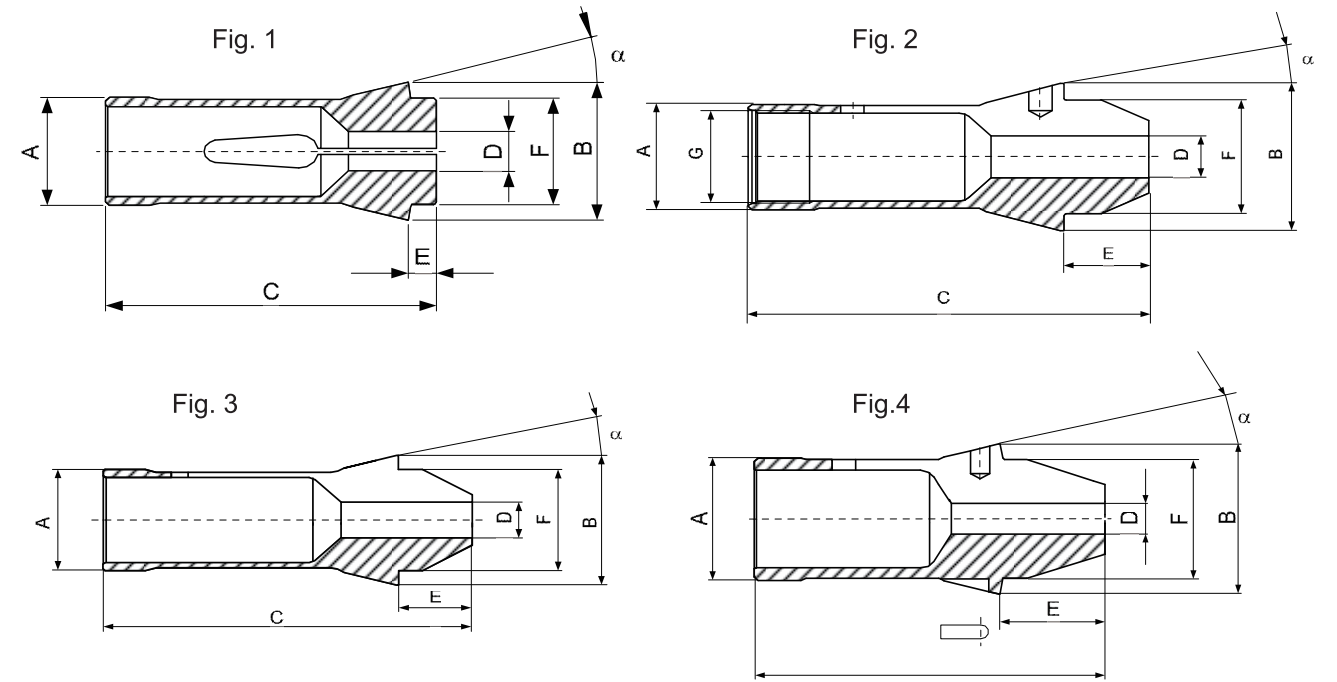
19)夹头F16/830前端有更大的台阶孔, 货号 and 台阶孔深度根据需求确认。

Collet F16/830 with reinforced head for larger stepped bores. Article and step length on request

26) 按需确认 - On request

### 5. F型夹头

Dimensions for collet seating



型号 Model	编号 Number	A	B	C	E	F	G	α	D min-max			图 Fig
									○	□	⬡	
F22	76-71	22	30	55	6	21	-	16°	0.5-17.0	1.0-12.0	1.0-14.5	1
F25	76-64	25	35	77	10	27	-	16°	0.5-21.0	1.0-15.0	1.0-18.0	1
	76-2018 10)76-64	25	35	85	18	27	M22x1	16°	0.5-20.0 不要槽-smooth	1.0-14.0	1.0-17.0	2
F26	76-90 26)	26	32	67	7	27.5	-	13°				1
F27	76-22	27	38	72.7	8	30	-	20°	0.5-23.0	1.0-16.0	1.0-20.0	1
	76-2040 10)76-22	27	38	83	18.3	30	-	16°	0.5-23.0 不要槽-smooth	1.0-15.5	1.0-19.05	4
F28	76-93	28	38	70	7	28	-	16°	0.5-23.0	1.0-16.0	1.0-20.0	1
F30	76-63	30	42	80	10	34	-	15°	0.5-26.0	1.0-18.0	1.0-22.22	1
	76-101	30	38	65	6	32	-	15°	0.5-26.0	1.0-18.0	1.0-22.5	1
	76-2019 10)76-101	30	38	79	20	32	-	15°	0.5-25.4 不要槽-smooth	1.0-18.0	1.0-22.0	3
F32	76-221	32	45	75	8	34	-	15°	1.0-27.0	2.0-19.0	2.0-23.0	1

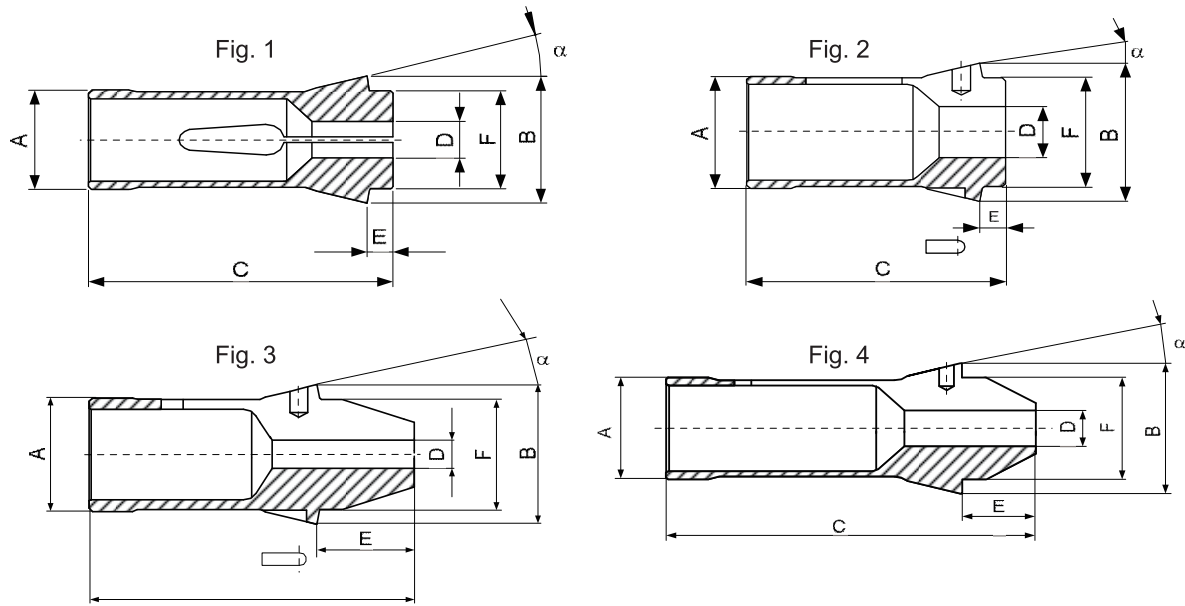
标准孔(圆形, 方形, 六角形)根据价目表。其他孔径按需确认。

Standard bores(round,suqare,hexagonal)accoring to price list,other bores on request.

10)基本款 - Basic item

26) 按需确认 - On request

5. F型夹头  
Dimensions for collet seating



型号 Model	编号 Number	A	B	C	E	F	G	$\alpha$	D min-max			图 Fig
F35	76-94	35	48	80	8	38	-	15°	1.0-30.0	2.0-21.0	2.0-26.0	1
	76-2010 22)&29)	35	43	70	7	34	-	15°	14.0-30.0			2
	76-2013 10)76-2010	35	43	90	27	34	-	15°	2.00-27.7			3
F37	76-740	37	47	92	10	40	-	16°	1.0-32.0	2.0-22.6	2.0-27.7	1
	76-2020 10)76-740	37	47	107	25	40	-	16°	1.0-32.0 不要槽-smooth	2.0-22.6	2.0-27.7	4
F38	76-72	38.08	49	107.5	9	38	-	15°	1.0-32.0	2.0-22.0	2.0-27.0	1
	76-2004 10)76-72	38.08	49	123	24.5	38	-	15°	1.0-32.0 不要槽-smooth	2.0-22.6	2.0-27.7	4
F42	76-99	42	55	94	9	42	-	15°	1.0-36.0	2.0-25.0	2.0-31.0	1
F48	76-81	48	60	94	9	50	-	15°	1.0-42.0	2.0-30.0	2.0-36.0	1
	76-2006 10)76-81	48	60	113	28	50	-	15°	2.0-42.0 不要槽-smooth	2.0-29.5	2.0-36.0	4
	76-2007 10)76-81	48	60	94	9	50	-	15°	1.0-42.0	2.0-30.0	2.0-36.0	2
	76-2026 10)76-81	48	60	113	28	50	-	15°	2.0-42.0 不要槽-smooth	2.0-29.5	2.0-36.0	3
F66	76-359	66	84	110	9	73	-	15°	3.97-60.0	3.97-42.0	3.97-52.0	1

标准孔(圆形,方形,六角形)根据价目表。其他孔径按需确认。

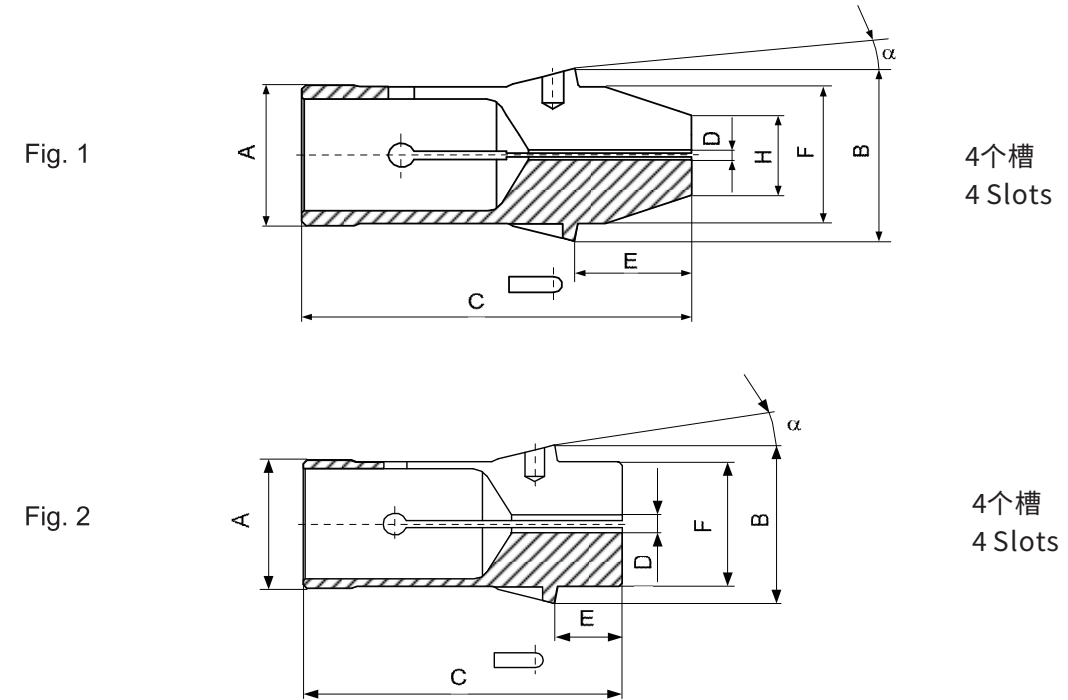
Standard bores(round,suqare,hexagonal)accoring to price list,other bores on request.

10)基本款 - Basic item

22)对于14mm以下的孔,请参见货号76-2013-For bores under 14 mm, see part number 76-2013

29)替换货号为 76-67 - Replacement article for 76-67

5. 电火花加工夹头  
Collets for EDM



型号 Model	编号 Number	A	B	C	E	F	H	a	D min-max		图 Fig
F35	76-2011 10)76-2010 23)	35	43	90	27	34	12	15°	2.5	坯孔/blank	1
							20	1	坯孔/blank		
	20	2.5	坯孔/blank								
	76-2012 10)76-2010	35	43	80	17	34	-	15°	5	坯孔/blank	2
F48	76-2029 10)76-2026 23)	48	60	113	28	50	25 35	15°	2.5 2.5	坯孔/blank 坯孔/blank	1

10)基本款 - Basic item

23) 订购时,请注明"H"的直径尺寸。

When ordering, please specify the required "H" extended nose diameter.



## 6. W型后拉式夹头 W Pull-type collets



W型夹头的夹紧方式:通过拉杆将夹头拉回到夹头座里,使夹头夹紧。

W型夹头与其他后拉式夹头的区别是其外螺纹公称直径几乎和夹头柄的直径相同。

主要推荐用于仪表车床和高精密机器上。

W型夹头张口度很小,这种夹头只能夹持公称直径尺寸。为获得最佳同心度,建议不要夹持小于夹头公称直径0.1mm的零件。

W型夹头的内孔都是光滑的。

These collets are closed by being drawn back into the collet seating by means of a draw bar.

The W collets differ from the other pull-type collets because of their external thread, which has a nominal diameter almost identical to the collet shank diameter.

They are principally recommended for toolroom lathes and high precision machines.

The collets only open a minimal amount. The pull-type collets generally only clamp the nominal diameter.

To obtain optimal concentricity, it is recommended not to clamp less than 0.1 mm below the nominal diameter.

The bores of these collets are smooth.

## 6. B型后拉式夹头 B Pull-type collets



B型夹头的夹紧方式:通过拉杆将夹头拉回到夹头座里,使夹头夹紧。

B型夹头与其他后拉式夹头的区别是其外螺纹公称直径略小于夹头柄的直径。主要用于仪表车床和高精密机器上。

B型夹头推荐用于某些指定类型设备的夹持工具,当以这种方式使用时,夹头设计需要轻微修改。

当在仪表车床上使用时,夹头张口度很小。

为了获得最佳的同心度,建议使用和零件公称直径匹配的夹头。

B型夹头孔通常是光滑的。

根据车床类型的不同,夹头内部加槽的尺寸从9mm开始,锯齿型(圆柱形和纵向槽)从14mm开始。

These collets are closed by being drawn back into the collet seating by means of a draw bar.

These collets differ from the other pull-type collets because of their external thread, where the diameter is slightly smaller than the collet shank diameter. The collets are principally used on tool room or precision lathes.

These collets can be also used as clamping tools for certain types of equipment. When used in this manner the design is slightly modified. When used on tool room lathes the collets open only a minimal amount. In order to obtain maximum concentricity it is advisable to use a collet fitting the nominal diameter of the part to be held.

The bores of these collets are generally smooth. Depending on the type of lathe; collets are available with grooved bores beginning at 9 mm diameter and serrated (cylindrical and longitudinal grooves) from 14 mm diameter.

## 6. L型后拉式夹头 L Pull-type collets



L型夹头通过拉杆夹紧。

除了夹头柄较长外,其他与B型和W型夹头相同(L=加长类型)。

夹头张口度很小,经常使用于工具车床和其他精密车床。为了获得最佳的同心度,建议使用零件公称直径匹配的夹头。

L型夹头的内孔都是光滑的。

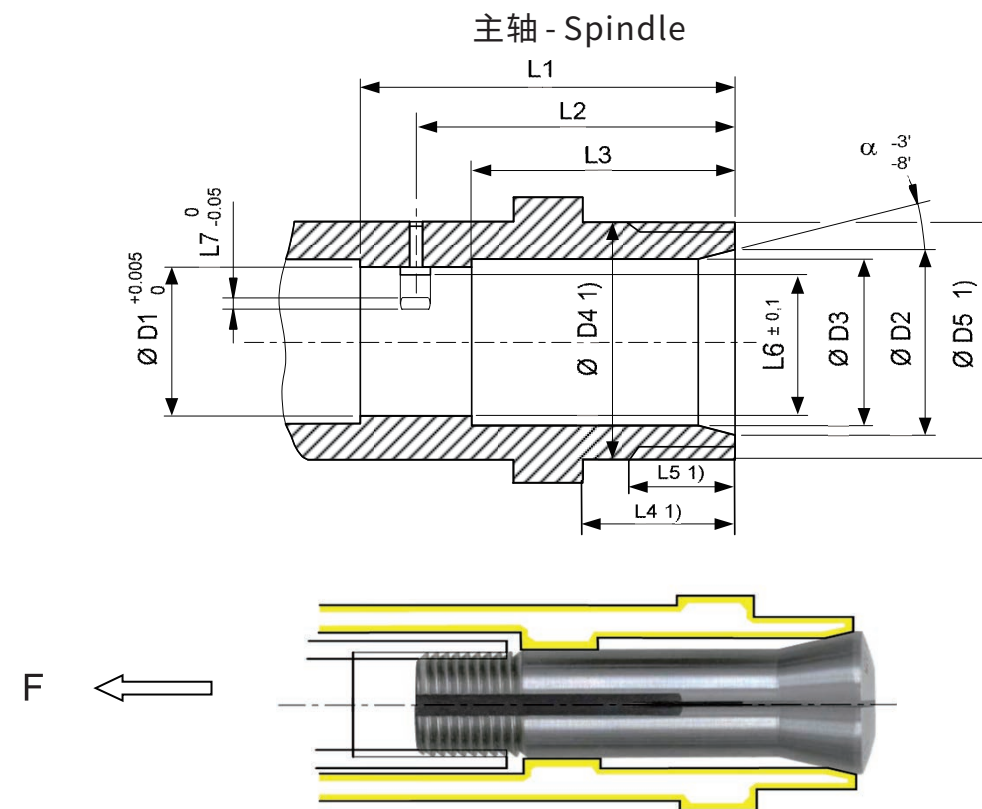
Collets are closed by a drawbar.

Their configuration is the same as collet types B and W, except the shank is longer (L = long type).

The collets only open a minimal amount and are often used on toolmaker lathes and other precision machines. To obtain optimal concentricity, it is recommended to use a collet that is the nominal diameter of the part to be clamped.

The bores of these collets are smooth.

## 6. W型夹头接口尺寸 Dimensions for W collet seating



1) 可以使用外部台阶夹头,内部台阶夹头和膨胀芯轴  
1) Permits use of external step collets, internal step collets, and expanding arbors  
参数:表面硬化深度0.4-0.6 mm,热处理达到 58-62 HRC  
Parameter: case hardened 0,4-0,6 mm, heat treat 58-62 HRC

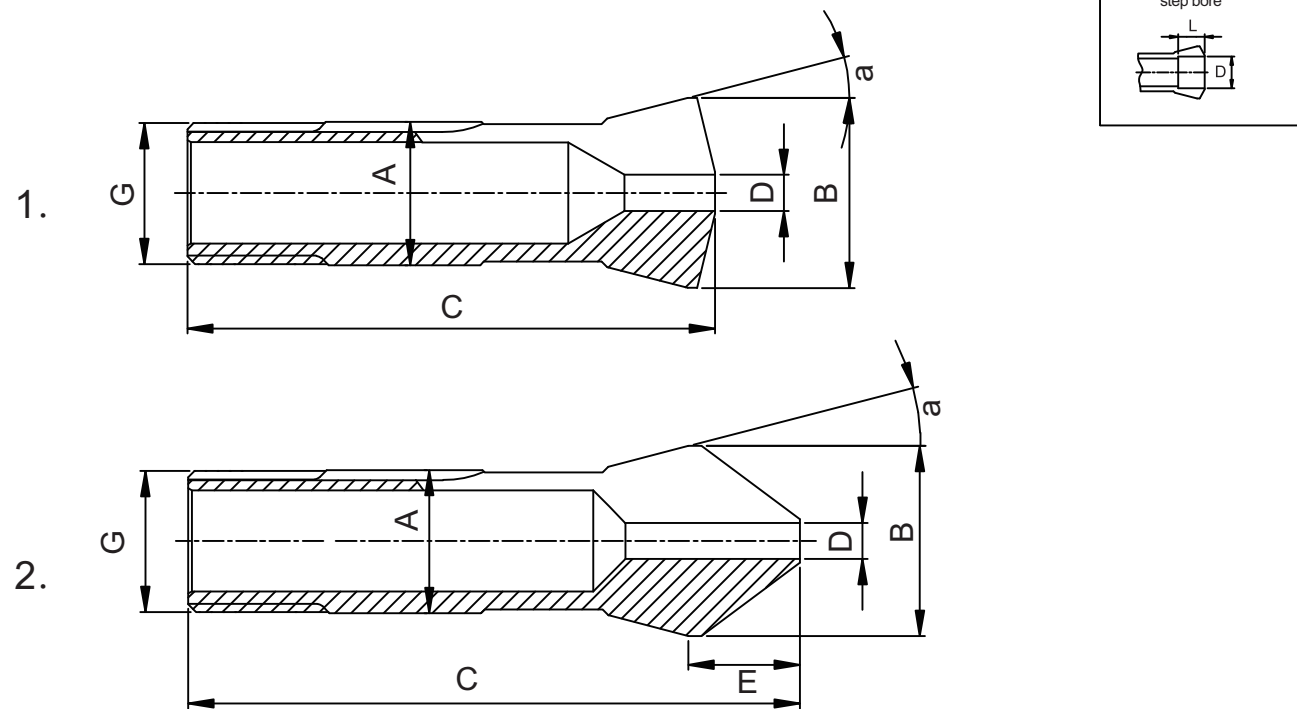
型号 Model	D1	D2	D3	D4	D5	L1	L2	L3	L4	L5	L6	L7	α	F
W10 80-1	10	13.8	12	-	-	31	26	22	-	-	9.2	2.1	15°	2000N
W12 80-2	12	15.8	14	23	M22.6x2	31	26.5	22	16	11	11	2.4	15°	3000N
W15 80-3	15	20	17	-	-	40	35	30	-	-	14	2.9	15°	5000N
W20 80-4	20	26	23	37.97	M37.6x3	52	42	36	25	15	18.7	3.9	15°	7500N 31)
W25 80-5	25	33.4	29	48	M47.6x3	67	54	43	25	15	23.2	4.9	15°	10000N 31)

F 一般应用的夹紧力,夹紧棒料(车削,铣削)  
F Clamping force for general applications, bar holding (turning, milling)

31) 对于尖嘴夹头,夹紧力为所示数值的50-75%  
For extended nose collets, 50-75% of the indicated value



4. 磨刀机  
Pull-type collets

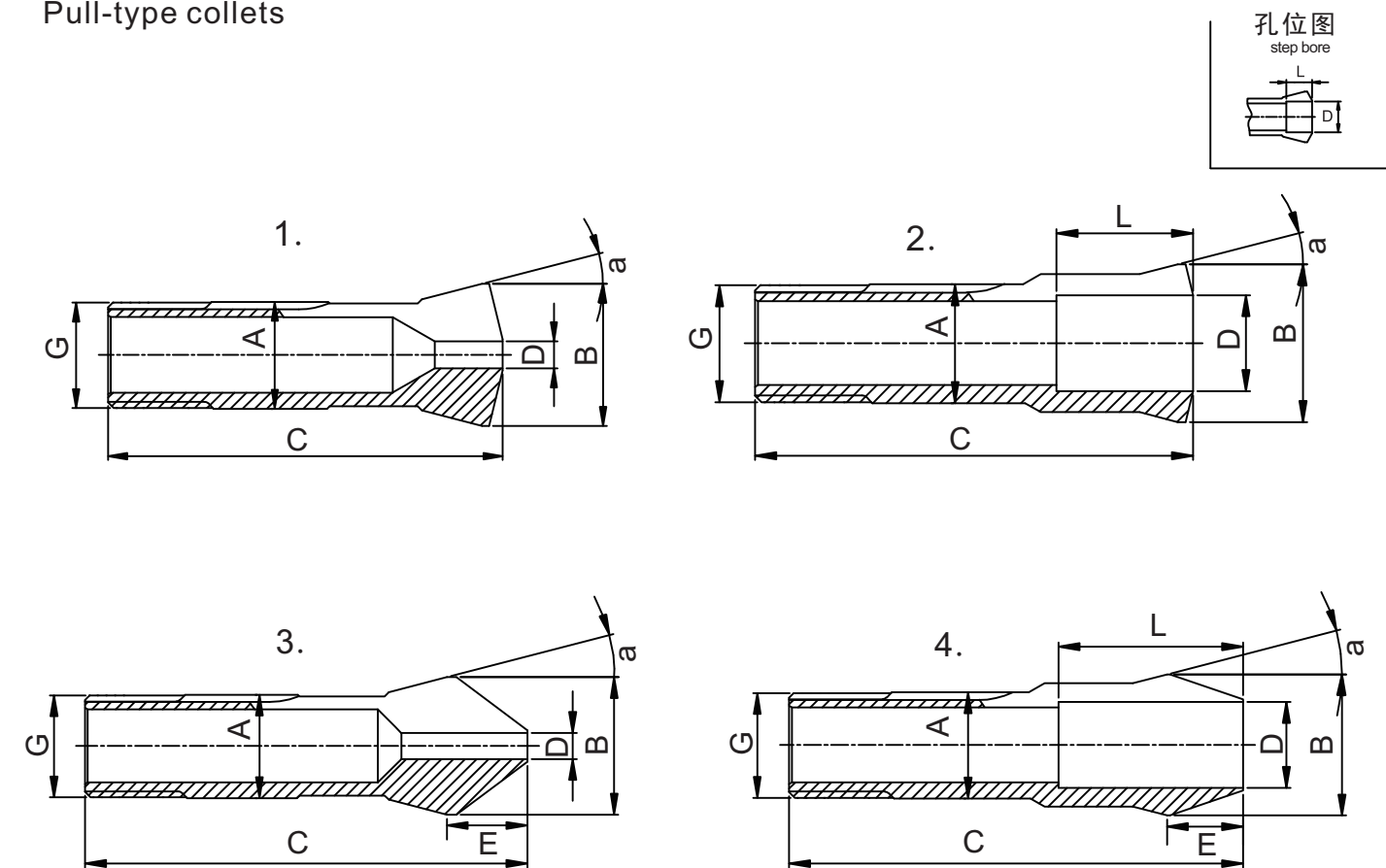


型号 Model	编号 Number	A	B	C	G	E	a	图 Fig	L	D min.- max. $\varnothing$								
W10	80-00001	10	14	43.6	$\varnothing 9.83 \times 0.833 \angle 45^\circ/5^\circ$	-	15°	1	-	0.30 ... 6.70								
									15	6.71 ... 8.00								
									6	8.01 ... 8.50								
									5	8.51 ... 9.00								
									4	9.01 ... 9.50								
									3	9.51 ... 10.00								
W12	80-00002	12	16	46	$\varnothing 11.75 \times 1.25 \angle 45^\circ/5^\circ$	-	15°	1	-	0.30 ... 8.00								
									17	8.01 ... 10.00								
									6	10.01 ... 10.50								
									5	10.51 ... 11.00								
									4	11.01 ... 11.50								
									3	11.51 ... 12.00								
	80-93108	12	16	52	$\varnothing 11.75 \times 1.25 \angle 45^\circ/5^\circ$	8.8	15°	2	-	0.30 ... 8.00								
									24	8.01 ... 10.00								
W15	80-00003	15	20.2	58.3	$\varnothing 14.75 \times 1.25 \angle 45^\circ/5^\circ$	-	15°	1	-	0.30 ... 10.70								
									22	10.71 ... 12.70								
									9.5	12.71 ... 13.00								
									8.5	13.01 ... 13.50								
									7.5	13.51 ... 14.00								
									6.5	14.01 ... 14.50								
									5.5	14.51 ... 15.00								
									4.5	15.01 ... 15.50								
									3.5	15.51 ... 16.00								
									80-93285	15	20.2	67	$\varnothing 14.75 \times 1.25 \angle 45^\circ/5^\circ$	12	15°	2	-	0.30 ... 10.20
																	32	10.21 ... 12.70

标准孔(圆形, 方形, 六角形) 根据价目表。其他孔径按需确认。

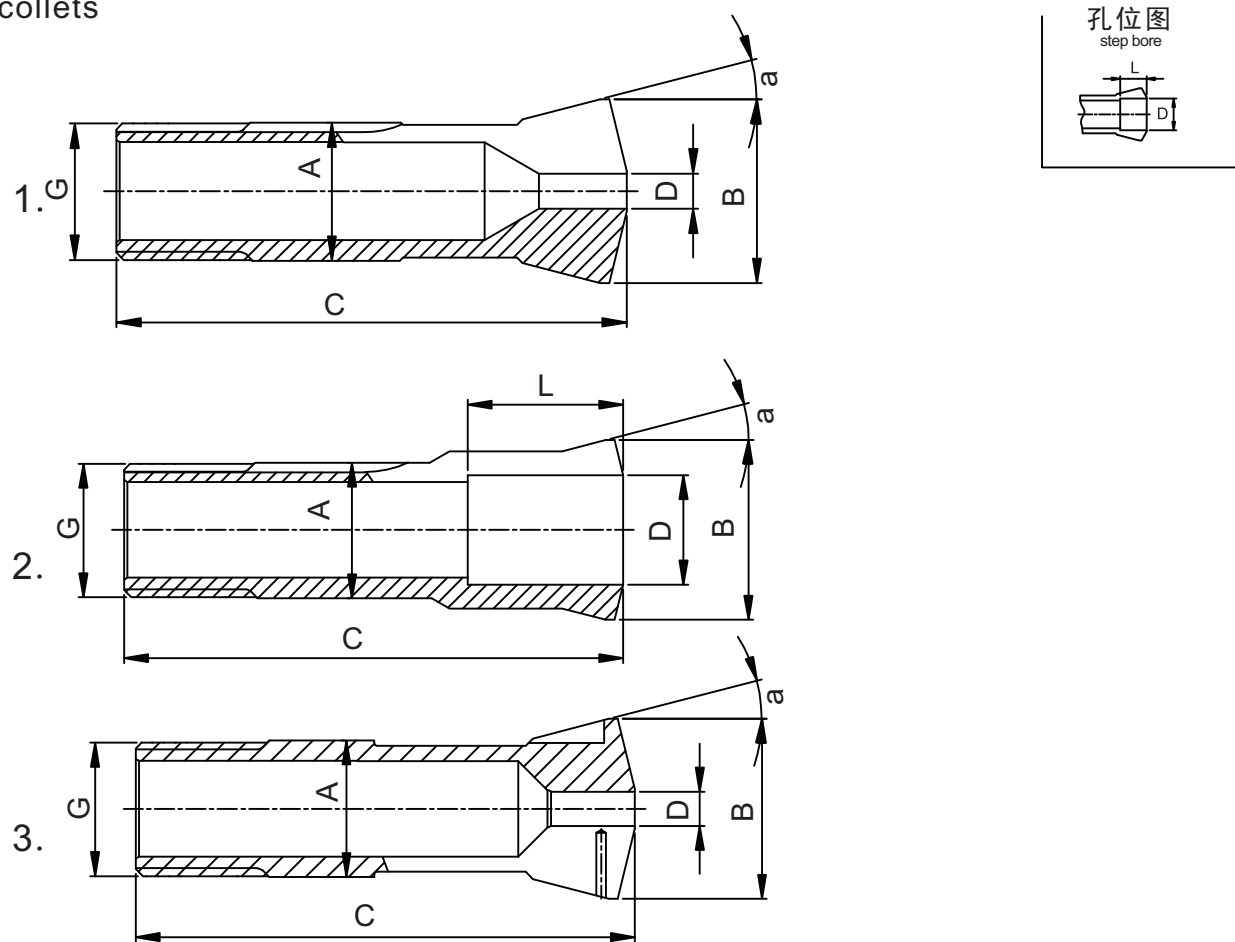
Standard bores(round,suqare,hexagonal)accoring to price list,other bores on request.

4. 磨刀机  
Pull-type collets



型号 Model	编号 Number	A	B	C	G	E	a	图 Fig	L	D min.- max. $\varnothing$
W20	80-00004	20	26.3	73	$\varnothing 19.7 \times 1.666 \angle 45^\circ/5^\circ$	-	15°	1	-	0.30 ... 14.50
									28	14.51 ... 16.00
									13.5	16.01 ... 16.50 20)
									13	16.51 ... 17.00 20)
									12.2	17.01 ... 17.50 20)
									11.5	17.51 ... 18.00 20)
									10.7	18.01 ... 18.50 20)
									10	18.51 ... 19.00 20)
									8.7	19.01 ... 19.50 20)
									7.5	19.51 ... 20.00 20)
									6.5	20.01 ... 20.50 20)
									5.5	20.51 ... 21.00 20)
									4.7	21.01 ... 21.50 20)
									4	21.51 ... 22.00 20)
									3	22.01 ... 22.50 20)
									2	22.51 ... 23.00 20)
80-00107								2	24	16.01 ... 20.00
80-92744		20	26.3	84.5	$\varnothing 19.7 \times 1.666 \angle 45^\circ/5^\circ$	15.5	15°	3	-	0.30 ... 13.00
									41	13.01 ... 16.00
80-93286								4	37	16.01 ... 20.00
80-93828								3	-	Morse DIN228MK-1
80-93829								4	66	Morse DIN228MK-2

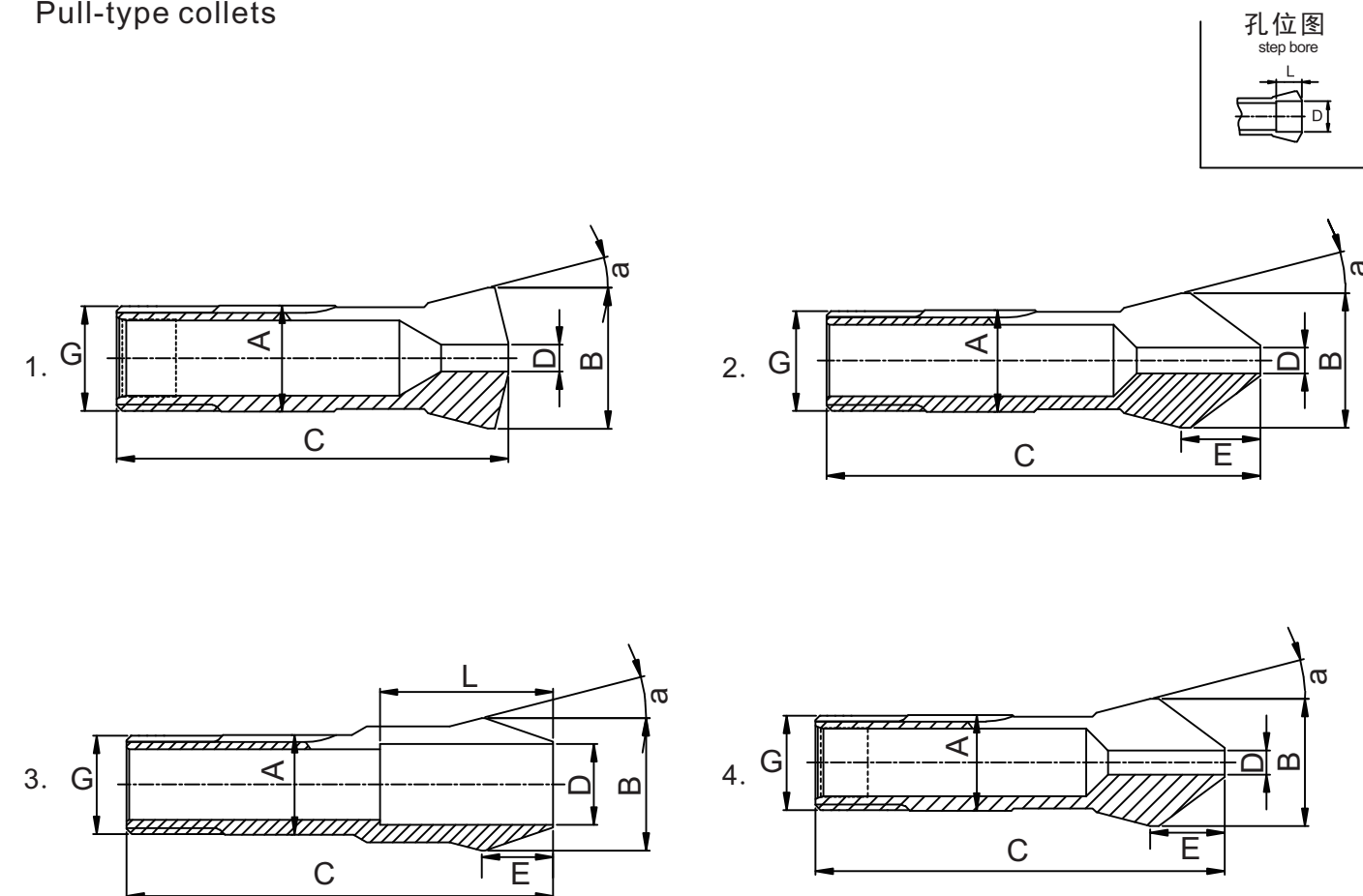
4. 磨刀机  
Pull-type collets



型号 Model	编号 Numbr	A	B	C	G	E	a	图 Fig	L	D min.- max. $\varnothing$								
W25	80-00005	25	33.7	97.6	$\varnothing$ 24.7 x 15f" $\angle$ 45°/5°	-	15°	1	-	0.30 ... 19.05								
									35	19.06 ... 21.00								
									16.5	21.01 ... 21.50 21)								
									16	21.51 ... 22.00 21)								
									15.5	22.01 ... 23.00 21)								
									15	23.01 ... 23.50 21)								
									14.5	23.51 ... 24.00 21)								
									13.5	24.01 ... 24.50 21)								
									12.5	24.51 ... 25.00 21)								
									11.5	25.01 ... 25.50 21)								
									10.5	25.51 ... 26.00 21)								
									9.5	26.01 ... 26.50 21)								
									8.5	26.51 ... 27.00 21)								
									7.5	27.01 ... 27.50 21)								
									6.5	27.51 ... 28.00 21)								
									5.5	28.01 ... 28.50 21)								
									4.5	28.51 ... 29.00 21)								
									80-00700							2	30	21.01 ... 25.40
									80-01923	25	35	94	M25 x1	-	16°	3	-	0.50 ... 17.00

21)非标孔  
Non-standard hole

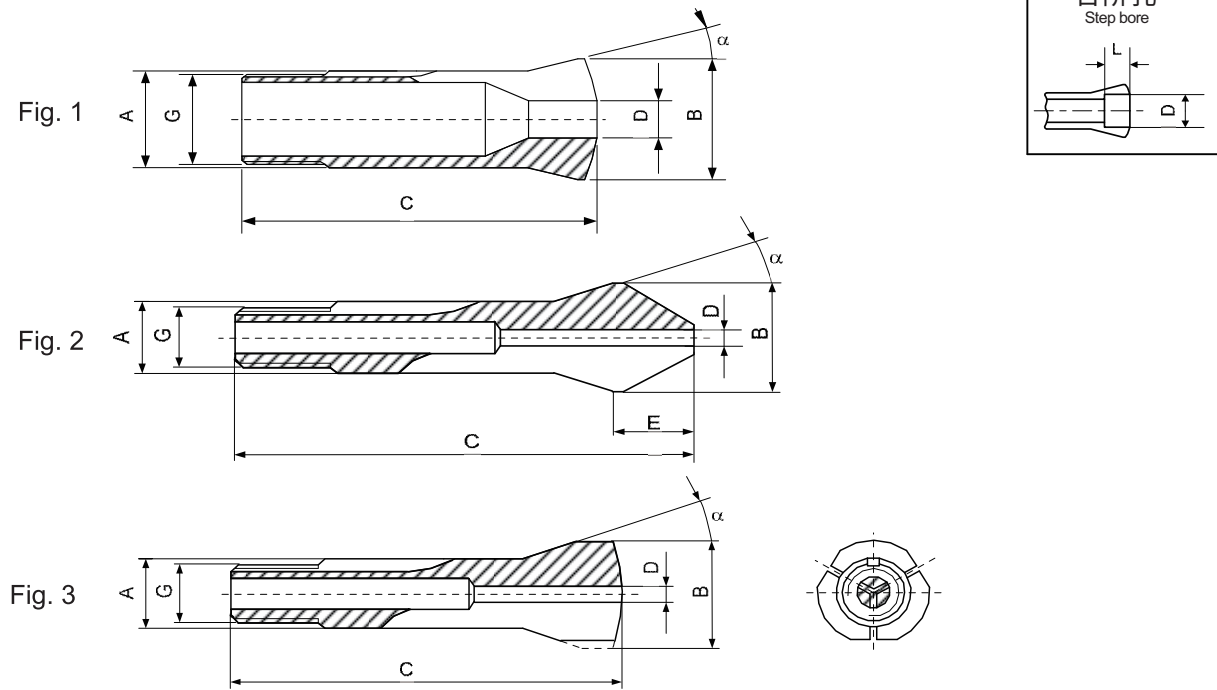
4. 磨刀机  
Pull-type collets



型号 Model	编号 Number	A	B	C	G	E	a	图 Fig	L	D min.- max. $\varnothing$		
W25	80-92872	25	33.7	112.2	$\varnothing$ 24.7 x 15f" $\angle$ 45°/5°	19.7	15°	2	-	0.30 ... 19.05		
									50	19.06 ... 21.00		
									80-02006	3	47	21.01 ... 25.40
									80-93837	2	-	Morse DIN228MK-1
									80-93838	2	-	Morse DIN228MK-2
									W31.75	80-00842	31.75	37.4
W31.75	80-02007	31.75	37.4	108.7	$\varnothing$ 31.4 x 20f" $\angle$ 60°	25.4	10°3'	4	40	25.20 ... 27.99		
									10	28.00 ... 28.99		
									7	29.00 ... 29.99		
									4	30.00 ... 31.00		
									64	25.20 ... 28.00		



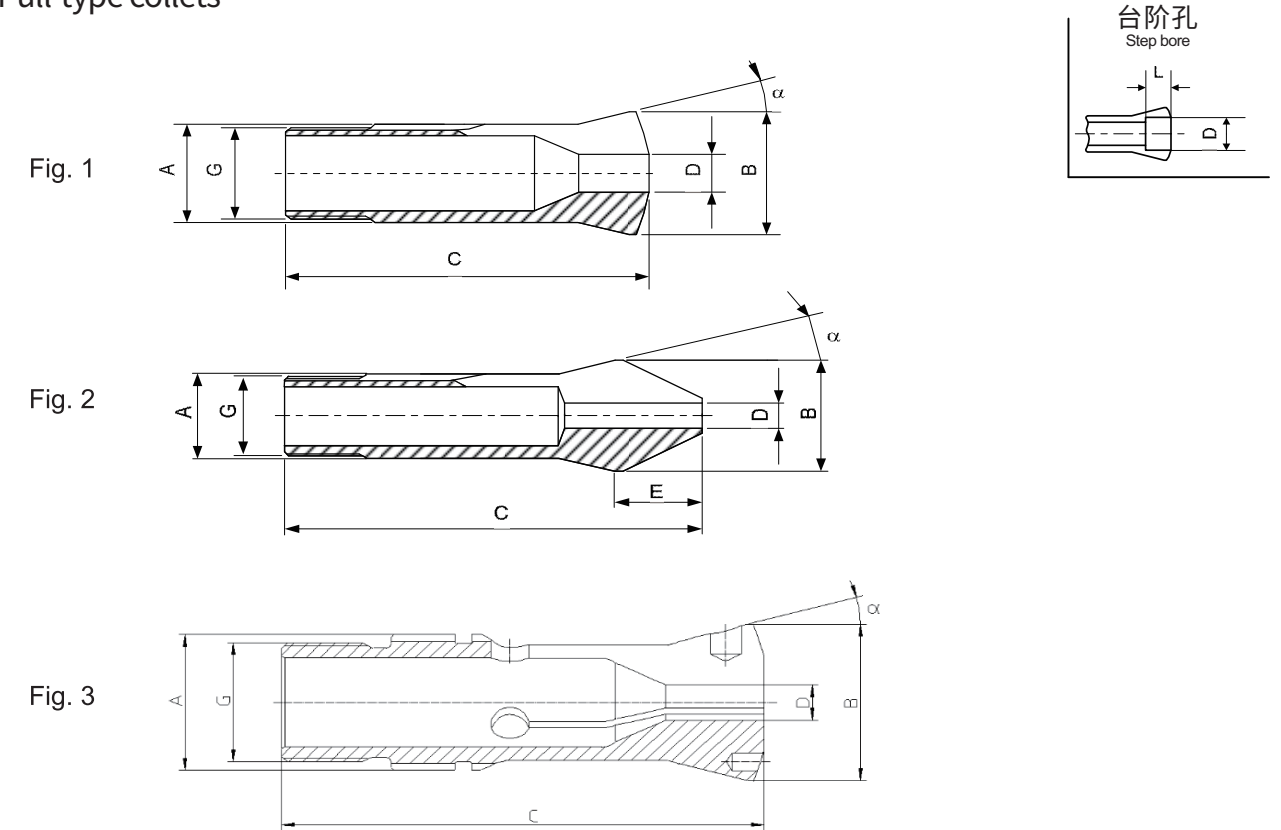
6. 后拉式夹头  
Pull-type collets



型号 Model	编号 Number	A	B	C	E	G	$\alpha$	D min-max	L	图 Fig								
B6	72-128	6	10.5	31.3	-	Ø5x0.706↘55°	20°	0.30...3.00	-	1								
								3.01...4.50	12									
								4.51...5.00	4.5									
								5.01...5.50	4									
								5.51...6.00	3.5									
72-1897 26)	6	9	31.3	-	Ø5x0.706↘55°	20°	0.30...3.00	-	3									
							3.01...4.50	12										
							4.51...5.00	4.5										
							5.01...5.50	4										
							5.51...6.00	3.5										
B8	72-137	8	13	35.5	-	Ø6.82x0.625↘55°	20°	0.30...4.00	-	1								
								4.01...6.50	13									
								6.51...7.00	6									
								7.01...7.50	5									
								7.51...8.00	4									
								8.01...8.50	3.2									
								8.51...9.00	2.5									
								9.01...9.50	1.7									
								9.51...10.00	1									
								72-1898 26)	8		13	35.5	-	Ø6.82x0.625↘55°	20°	0.30...4.00	-	3
																4.01...6.50	12.5	
6.51...7.00	6																	
7.01...7.50	5																	
7.51...8.00	4																	
72-95	8	13	40.5	7	Ø6.82x0.625↘55°	20°	0.30...3.30	-	2									
							3.31...6.50	21										

标准孔(圆形,方形,六角形)根据价目表。其他孔径按需确认。  
Standard bores (round, square, hexagonal) according to price list. Other bores on request.  
26) 按需确认 - On request

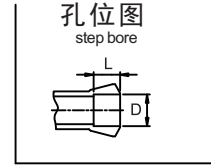
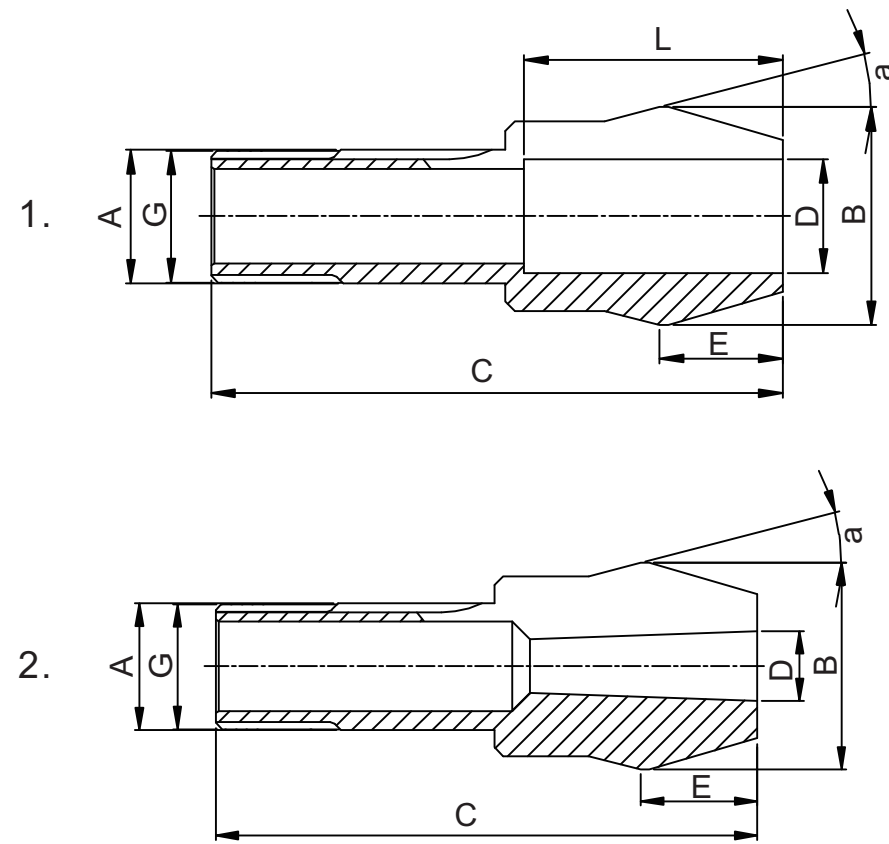
6. 后拉式夹头  
Pull-type collets



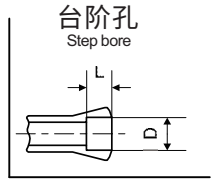
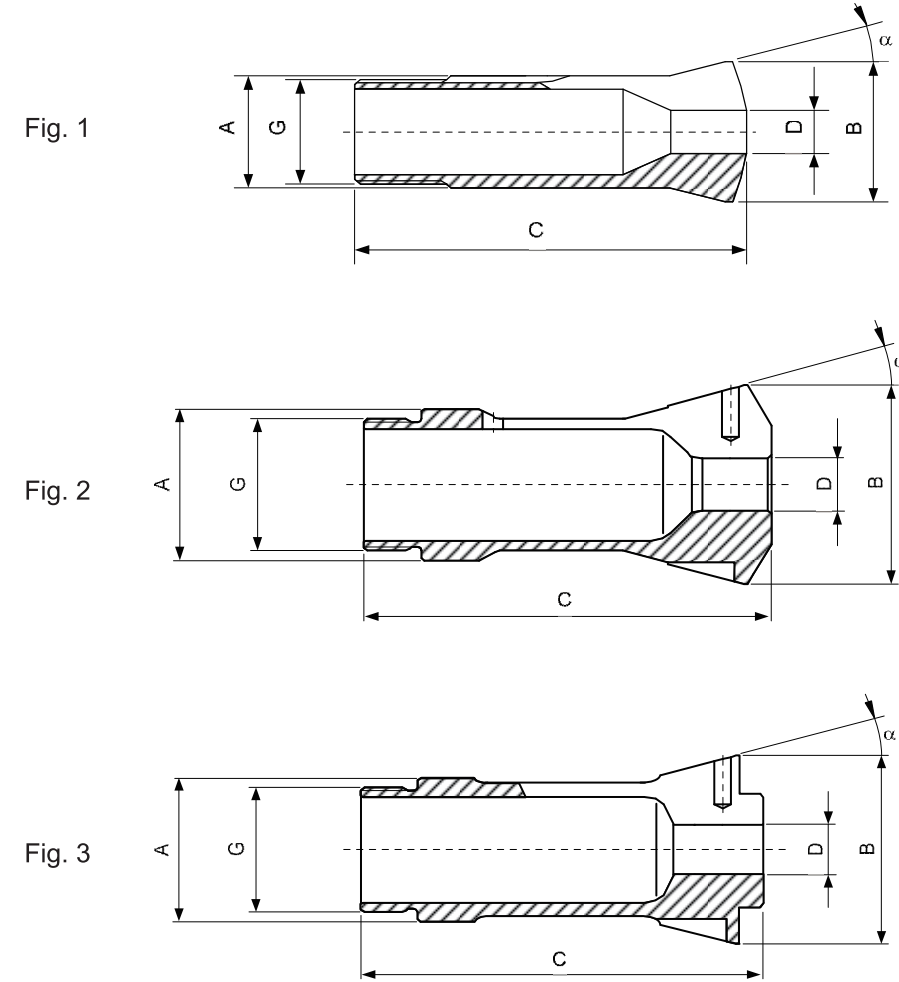
型号 Model	编号 Number	A	B	C	E	G	$\alpha$	D min-max	L	图 Fig
B15	72-139	15	21	55	-	M13x1	20°	0.30...9.50	-	1
								9.51...12.50	20	
								12.51...13.00	8.5	
								13.01...13.50	7.7	
								13.51...14.00	7	
								14.01...14.50	6.5	
B23	72-2008	23	26.3	75	-	M20x1	15°	3.00...14.00	-	3
B32	72-55 26)	32	40	102	-	M30x1.5	15°	3.00...24.00	-	1
								24.01...28.00	44	
								28.01...30.00	12	
								30.01...32.00	8	
B32	72-65	32	40	106	-	Ø29.7x1.693↘45°/5°	15°	0.30...24.00	-	1
								24.01...28.00	44	
								28.01...30.00	12	
								30.01...32.00	8	
								72-2003	32	
								24.01...28.00	64	

标准孔(圆形,方形,六角形)根据价目表。其他孔径按需确认。  
Standard bores (round, square, hexagonal) according to price list. Other bores on request.  
26) 按需确认 - On request

6. 后拉式夹头  
Pull-type collets



6. B型夹头  
Pull-type collets



型号 Model	编号 Number	A	B	C	E	G	a	图 Fig	L	D min.-max. $\varnothing$
B 32/45	72-2005	32	53	148.5	32.5	$\varnothing 29.7 \times 1.693 \angle 45^\circ/5^\circ$	15°	1	-	1.00 ... 24.00
									80	24.01 ... 40.00
	72-93409	32	53	148.5	32.5	$\varnothing 29.7 \times 1.693 \angle 45^\circ/5^\circ$	15°	2	-	Morse DIN228MK-1 26)
	72-93410	32	53	148.5	32.5	$\varnothing 29.7 \times 1.693 \angle 45^\circ/5^\circ$	15°	2	-	Morse DIN228MK-2 26)
	72-93411	32	53	148.5	32.5	$\varnothing 29.7 \times 1.693 \angle 45^\circ/5^\circ$	15°	2	-	Morse DIN228MK-3 26)
	72-93412	32	53	173	57	$\varnothing 29.7 \times 1.693 \angle 45^\circ/5^\circ$	15°	2	107	Morse DIN228MK-4 26)

标准孔(圆形,方形,六角形)根据价目表.其他孔径按需确认。

Standard bores(round,suqare,hexagonal)accoring to price list,other bores on request.

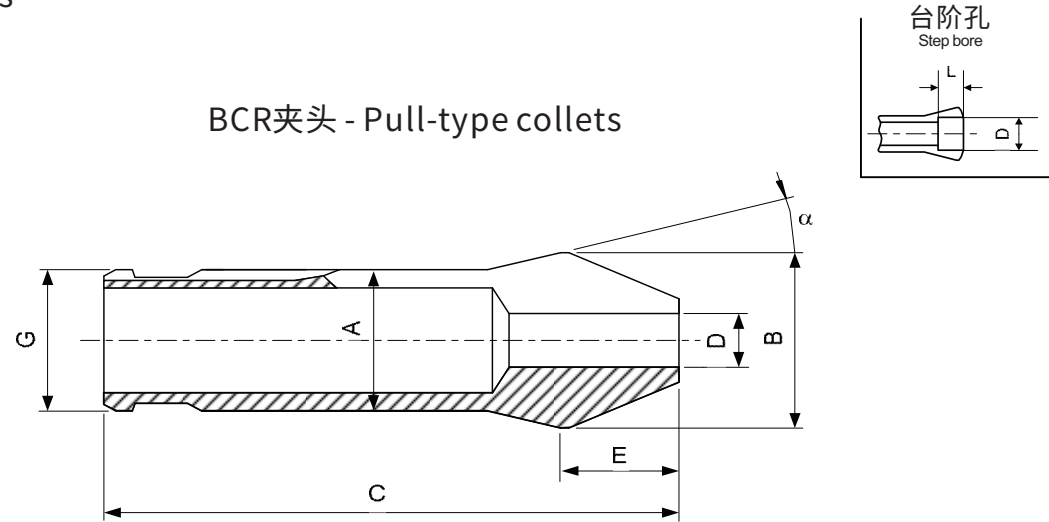
型号 Model	编号 Number	A	B	C	E	G	$\alpha$	D min-max $\varnothing$	L	图 Fig
B34	72-1820	34	42	90	-	M30x1 à gauche	16°	3.00...25.00	-	3
B45	72-199	45	53	115	-	M42x1.5	15°	1.00...36.00	-	1
								36.01...40.99	53	
								41.00...41.99	14	
								42.00...42.99	12	
								43.00...43.99	10	
44.00...45.99	8									
B46	72-2007	46	60.3	120	-	M40x1.5 à gauche	15°	6.00...33.00	-	2

标准孔(圆形,方形,六角形)根据价目表.其他孔径按需确认。

Standard bores (round, square, hexagonal) according to price list. Other bores on request.



6. BCR夹头  
Pull-type collets



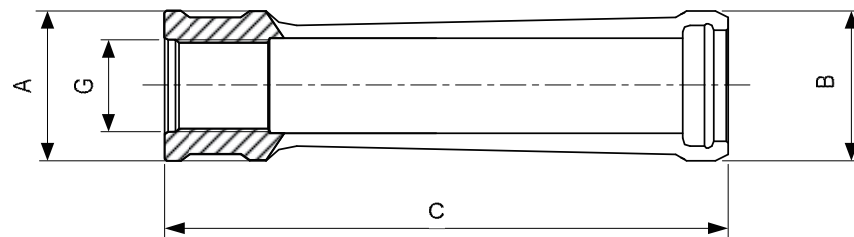
型号 Model	编号 Number	A	B	C	E	G	α	D min-max	L
BCR32	72-93235	32	40	117	24	32	15°	0.30...24.00 24.01...28.00	- 64
	72-93416 26)	32	40	117	24	32	15°	Morse DIN228 MK-1	-
	72-93417 26)	32	40	117	24	32	15°	Morse DIN228 MK-2	-
	72-93418 26)	32	40	117	24	32	15°	Morse DIN228 MK-3	-

标准孔(圆形, 方形, 六角形)根据价目表。其他孔径按需确认。

Standard bores (round, square, hexagonal) according to price list. Other bores on request.

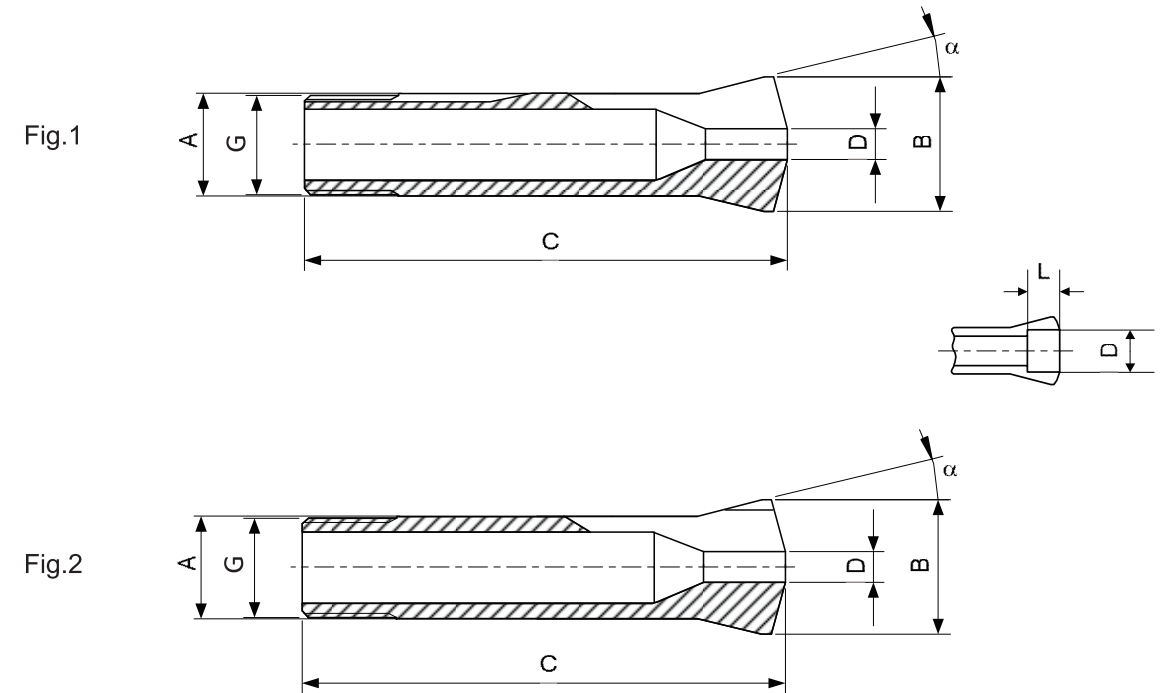
26) 按需确认 - On request

BCR夹头拉杆 - Pull-type collet for BCR



型号 Model	编号 Number	A	B	C	E
D40	74-60039	40	40	133	M24x1.5

6. 后拉式夹头  
Pull-type collets



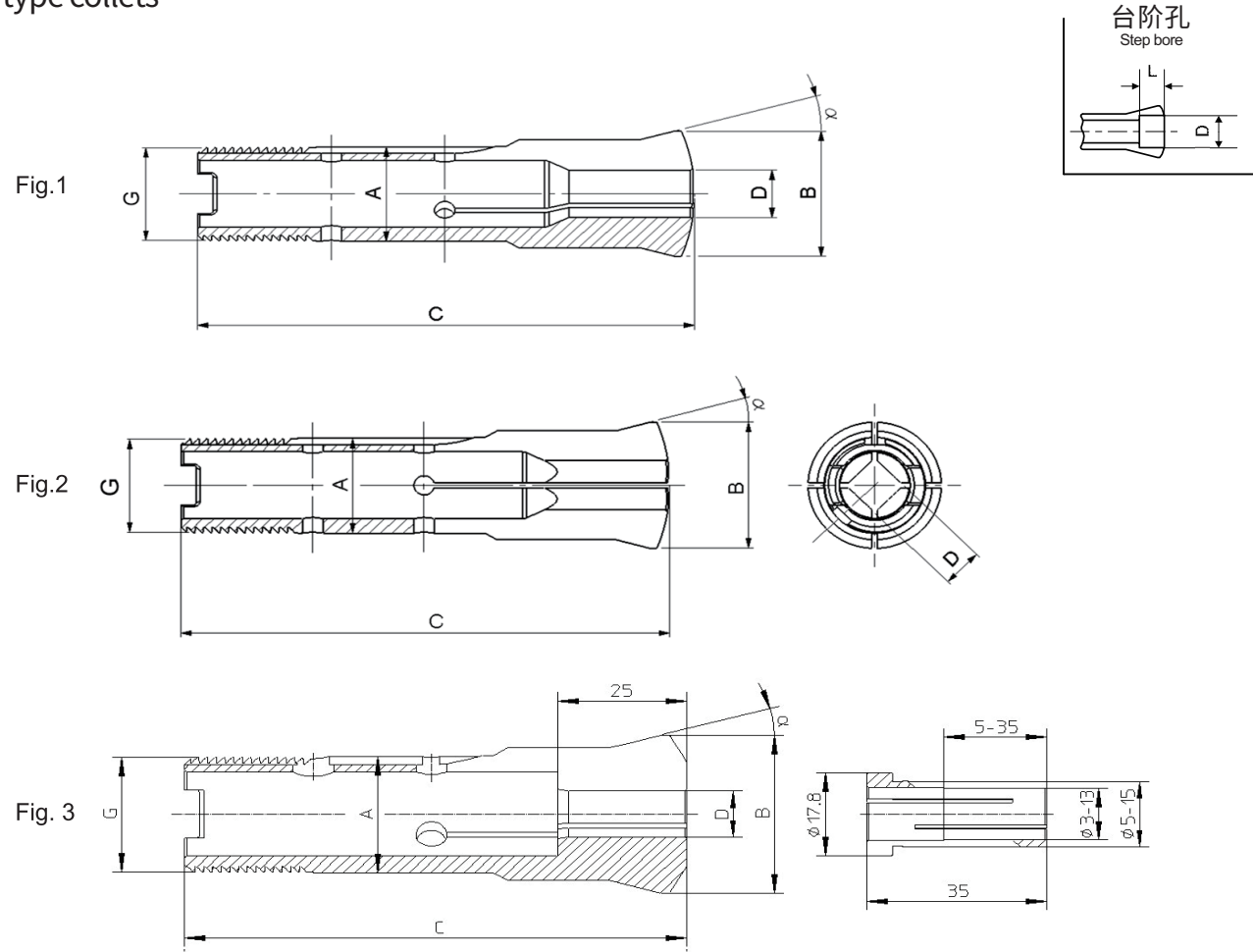
型号 Model	编号 Number	A	B	C	G	α	D min-max	L	图 Fig							
L20	77-122	20	28	122	Ø17.2x2 ↯ 45°/5°	17°30'	0.30...13.00	-	1							
							13.01...17.50	59								
							17.51...18.00	12								
							18.01...18.50	11								
							18.51...19.00	10								
							19.01...19.50	9								
							19.51...20.00	8								
							20.01...20.50	7								
							20.51...21.00	6.5								
							21.01...21.50	5.5								
							21.51...22.00	4.5								
							77-826 26)	20		27.5	122	Ø18.5x1.4 ↯ 50°	20°	0.30...13.00	-	2
														13.01...18.00	59	
														18.01...18.50	11	
18.51...19.00	10															
19.01...19.50	9															
19.51...20.00	8															

标准孔(圆形, 方形, 六角形)根据价目表。其他孔径按需确认。

Standard bores (round, square, hexagonal) according to price list. Other bores on request.

26) 按需确认 - On request

6. 多工位机床后拉式夹头  
Pull-type collets

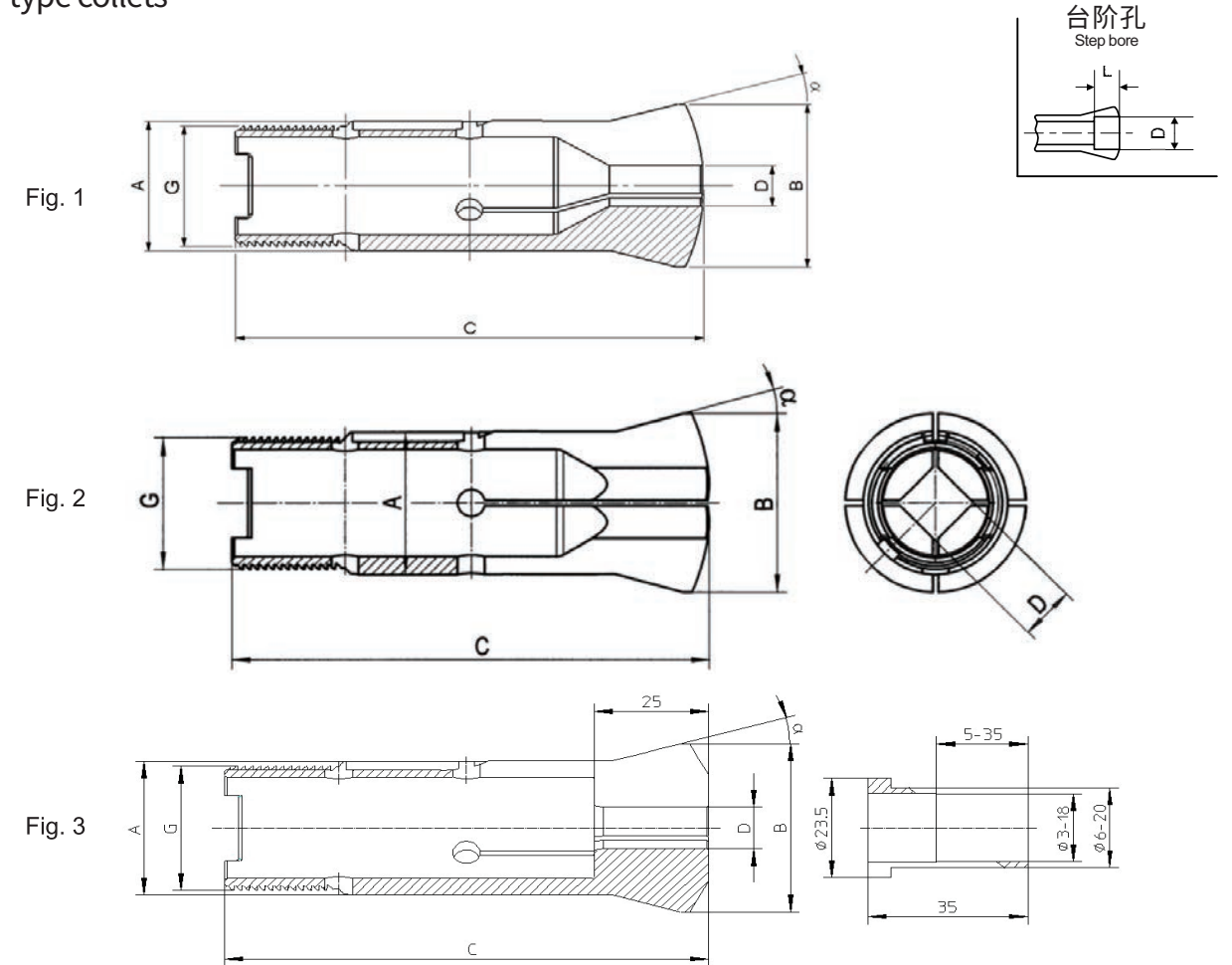


型号 Model	编号 Number	A	B	C	G	$\alpha$	D min-max	L	图 Fig
HW20	80-2030	20	26.3	96.5	$\varnothing 19.7 \times 1.666 \angle 45^\circ/5^\circ$	15°	$\varnothing$ 0.30...13.79	-	1
							13.80...20.00	31	1
	20	26.3	96.5	$\varnothing 19.7 \times 1.666 \angle 45^\circ/5^\circ$	15°	$\square$ 1.00...11.79	-	1	
						11.80...17.00	31	2	
HW25	25	33.7	97.6	$\varnothing 24.7 \times 1.693 \angle 45^\circ/5^\circ$	15°	$\varnothing$ 5.00...15.00	-	3	
						$\varnothing$ 0.30...17.79	-	1	
	25	33.7	97.6	$\varnothing 24.7 \times 1.693 \angle 45^\circ/5^\circ$	15°	17.80...25.40	31	1	
						$\square$ 1.00...15.29	-	1	
	25	33.7	97.6	$\varnothing 24.7 \times 1.693 \angle 45^\circ/5^\circ$	15°	15.30...22.00	31	1	
						$\square$ 3.00...12.59	-	2	
						12.60...19.05	31		

标准孔(圆形, 方形, 六角形) 根据价目表。其他孔径按需确认。

Standard bores (round, square, hexagonal) according to price list. Other bores on request.

6. 多工位机床后拉式夹头  
Pull-type collets

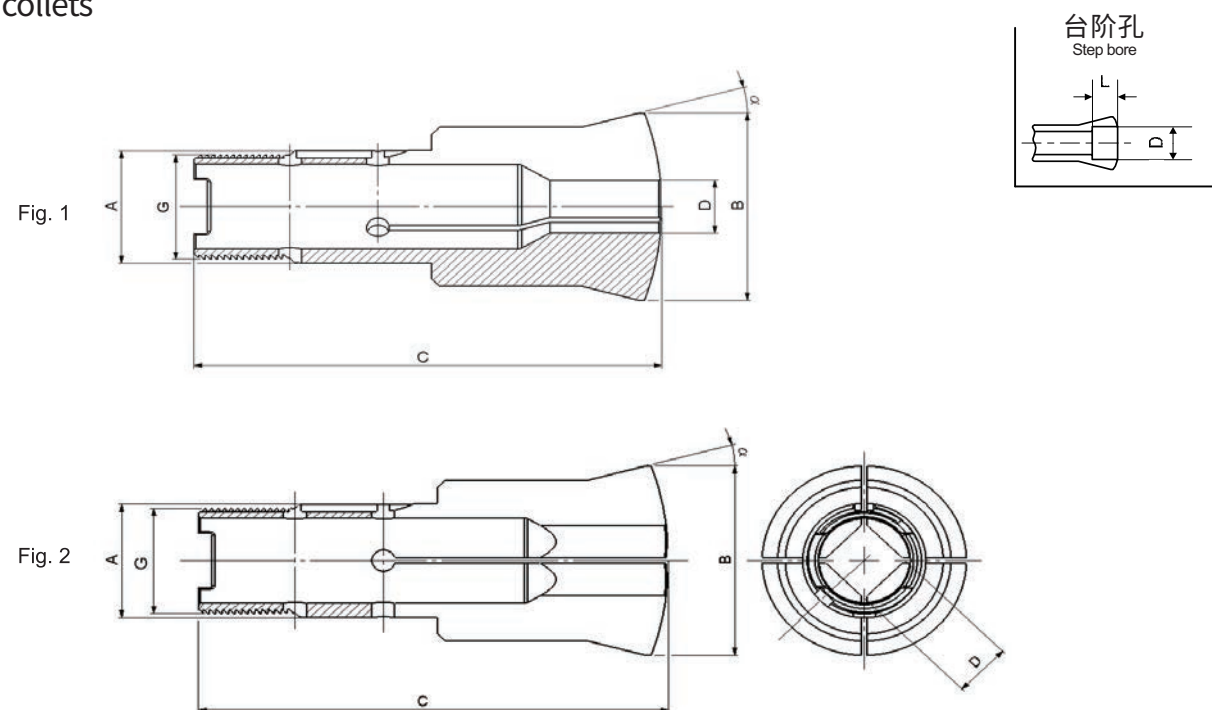


型号 Model	编号 Number	A	B	C	G	$\alpha$	D min-max	L	图 Fig	
HW20	72-2010	32	40	106	$\varnothing 29.7 \times 1.693 \angle 45^\circ/5^\circ$	15°	$\varnothing$ 6.00...20.00	-	3	
							$\square$ 3.00...23.79	-	1	
	72-2030	32	40	106	$\varnothing 29.7 \times 1.693 \angle 45^\circ/5^\circ$	15°	$\varnothing$ 23.80...27.99	44	1	
							28.00...29.99	12		
							30.00...32.00	8	$\square$	
							$\square$ 3.00...20.59	-		1
							20.60...23.99	44		1
							24.00...25.49	12		
	72-2040	32	40	106	$\varnothing 29.7 \times 1.693 \angle 45^\circ/5^\circ$	15°	25.50...27.00	8	2	
							$\square$ 3.00...16.99	-		
							17.00...19.79	44	2	
							19.80...20.99	12		
						21.00...22.60	8			

标准孔(圆形, 方形, 六角形) 根据价目表。其他孔径按需确认。

Standard bores (round, square, hexagonal) according to price list. Other bores on request.

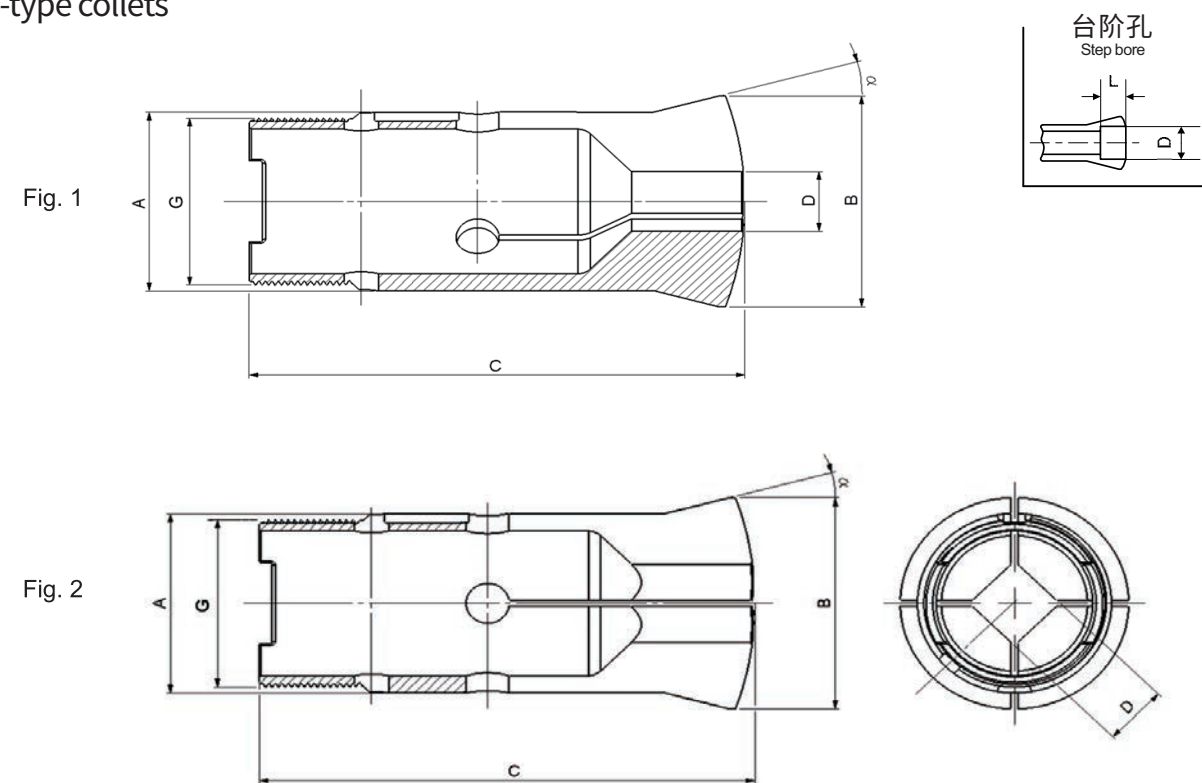
6. 多工位机床后拉式夹头  
Pull-type collets



型号 Model	编号 Number	A	B	C	G	$\alpha$	D min-max	L	图 Fig
HB32/45	72-2033	32	53	122	$\text{Ø}29.7 \times 1.693 \angle 45^\circ/5^\circ$	15°	3.00...23.79	-	1
							23.80...40.99	50	
							41.00...41.99	14	
							42.00...42.99	12	
							43.00...43.99	10	
							44.00...45.00	8	
							3.00...20.59	-	
	20.60...34.99	50							
	35.00...35.99	14							
	36.00...36.99	12							
	37.00...37.99	10							
	38.00...38.50	8							
	72-2043	32	53	122	$\text{Ø}29.7 \times 1.693 \angle 45^\circ/5^\circ$	15°	3.00...16.79	-	2
							16.80...28.99	50	
29.00...29.99							12		
30.00...30.99							10		
31.00...31.75							8		

标准孔(圆形, 方形, 六角形) 根据价目表。其他孔径按需确认。  
Standard bores (round, square, hexagonal) according to price list. Other bores on request.

6. 多工位机床后拉式夹头  
Pull-type collets

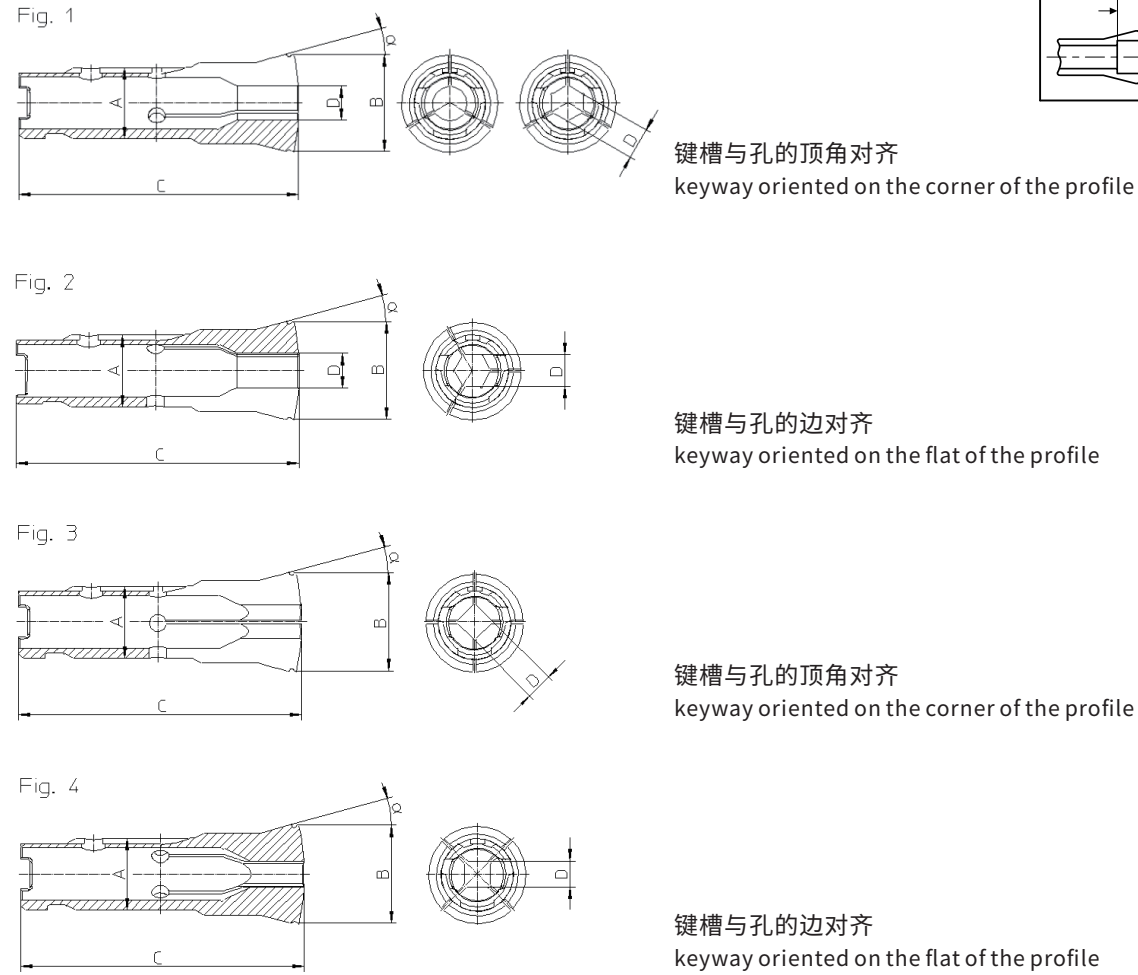


型号 Model	编号 Number	A	B	C	G	$\alpha$	D min-max	L	图 Fig							
HB45	72-2036	45	53	115	M42x1.5	15°	3.00...36.00	-	1							
							36.01...40.99	53								
							41.00...41.99	14								
							42.00...42.99	12								
							43.00...43.99	10								
							44.00...45.00	8								
							3.00...31.00	-								
							31.01...34.99	53								
							35.00...35.99	14								
							36.00...36.99	12								
							37.00...37.99	10								
							38.00...38.50	8								
							72-2046	45		53	115	M42x1.5	15°	3.00...25.40	-	2
														25.41...28.99	53	
29.00...29.99	12															
30.00...30.99	10															
31.00...31.75	8															

标准孔(圆形, 方形, 六角形) 根据价目表。其他孔径按需确认。  
Standard bores (round, square, hexagonal) according to price list. Other bores on request.



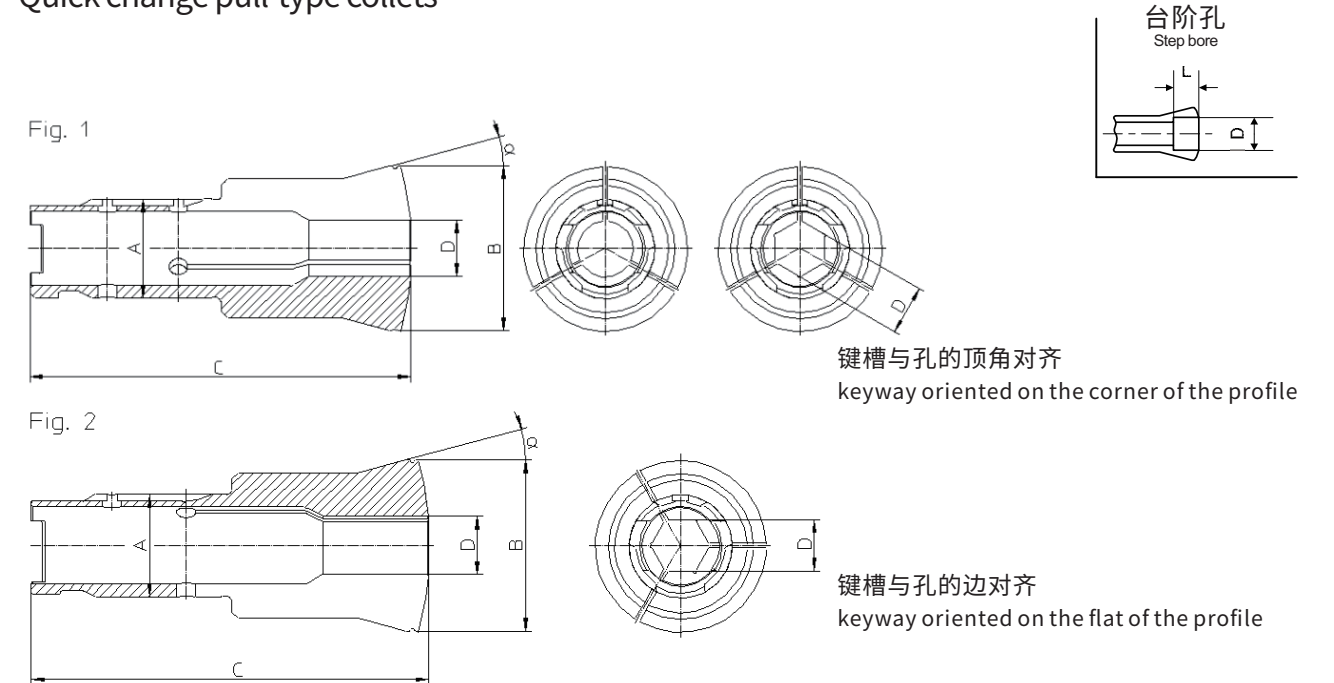
6. 多工位机床后拉式夹头  
Pull-type collets



型号 Model	编号 Number	A	B	C	$\alpha$	D min-max	L	图 Fig
HWR25	80-2034 26)	25	33.7	97.6	15°	3.00...17.79	-	1
						17.80...25.40	31	1
	80-2035 26)	25	33.7	97.6	15°	0.30...17.79	-	2
						17.80...25.40	31	2
	80-2044 26)	25	33.7	97.6	15°	3.00...12.59	-	3
						12.60...19.05	31	3
	80-2045 26)	25	33.7	97.6	15°	3.00...12.59	-	4
						12.60...19.05	31	4

26) 按需确认 - On request

6. 快换后拉式夹头  
Quick change pull-type collets



型号 Model	编号 Number	A	B	C	$\alpha$	D min-max	L	图 Fig
HBR32/45	72-2034 26)	32	53	123.5	15°	3.00...23.79	-	1
						23.80...40.99	52	1
						41.00...41.99	16	1
						42.00...42.99	14	1
						43.00...43.99	12	1
	44.00...45.00	10	1					
	72-2035 26)	32	53	123.5	15°	3.00...20.59	-	1
						20.60...34.99	52	1
						35.00...35.99	16	2
						36.00...36.99	14	2
37.00...37.99						12	2	
38.00...38.50	10	2						

26) 按需确认 - On request

6. 快换后拉式夹头  
Quick change pull-type collets

Fig. 3

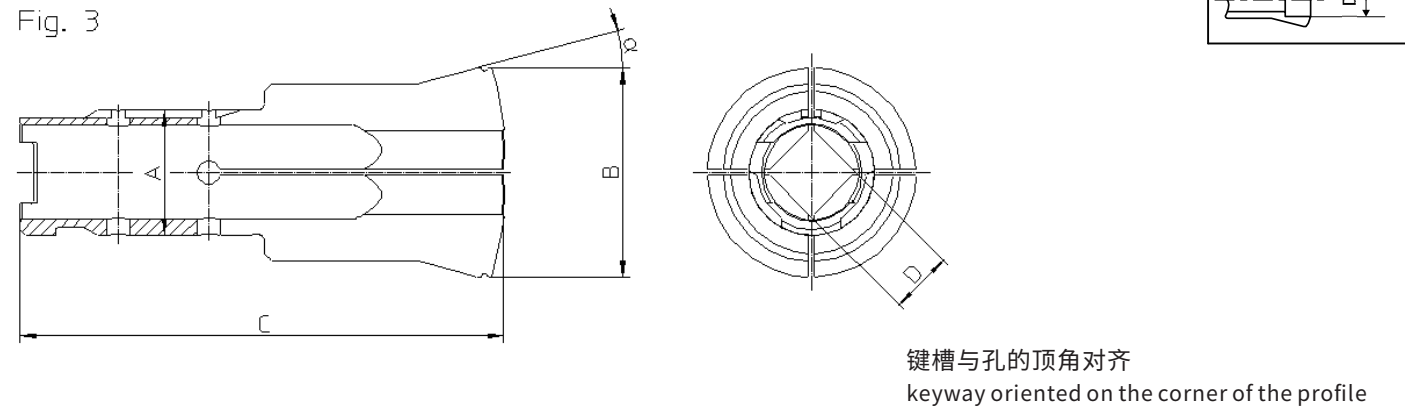
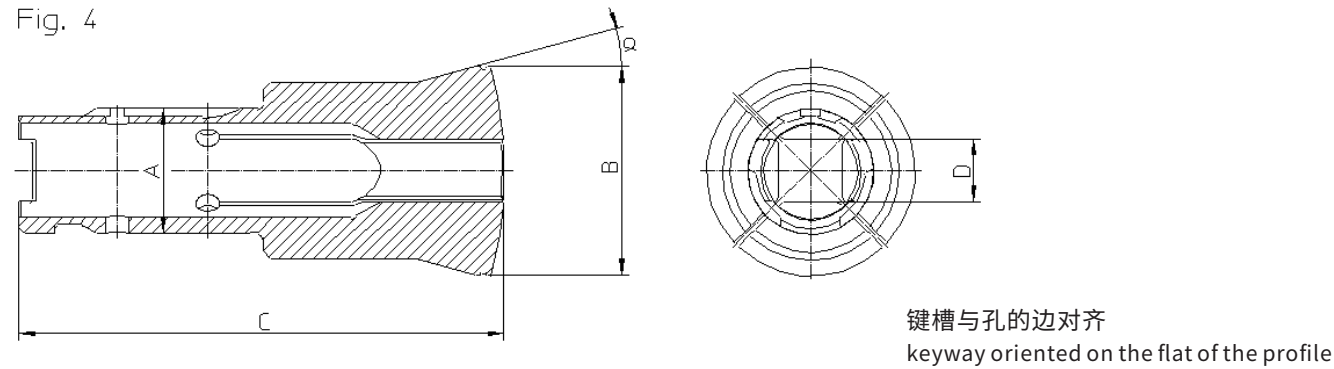


Fig. 4



型号 Model	编号 Number	A	B	C	$\alpha$	D min-max	L	图 Fig
HBR32/45	72-2044 26)	32	53	123.5	15°	3.00...16.79	-	3
						16.80...28.99	52	
						29.00...29.99	14	
						30.00...30.99	12	
						31.00...31.75	10	
	72-2045 26)	32	53	123.5	15°	3.00...16.79	-	4
						16.80...28.99	52	
						29.00...29.99	14	
						30.00...30.99	12	
						31.00...31.75	10	

26) 按需确认 - On request

6. 快换后拉式夹头  
Quick change pull-type collets

Fig. 1

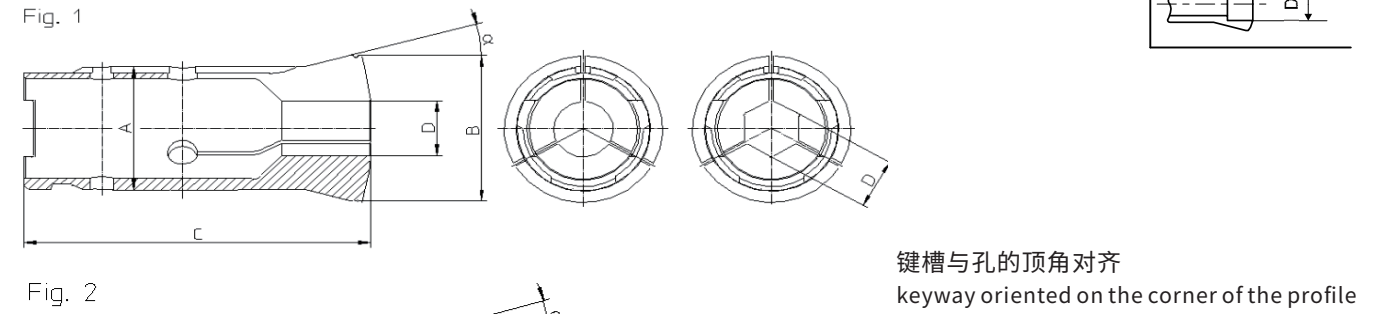
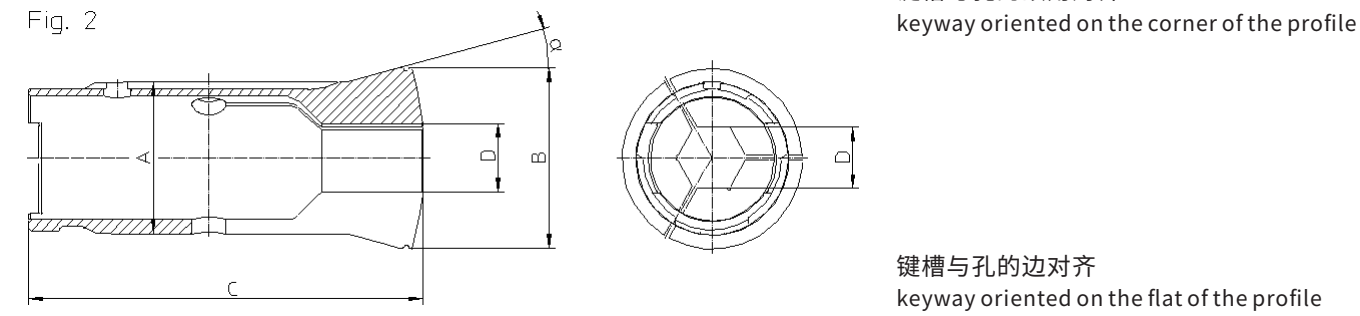


Fig. 2

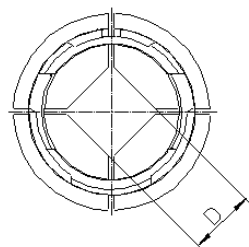
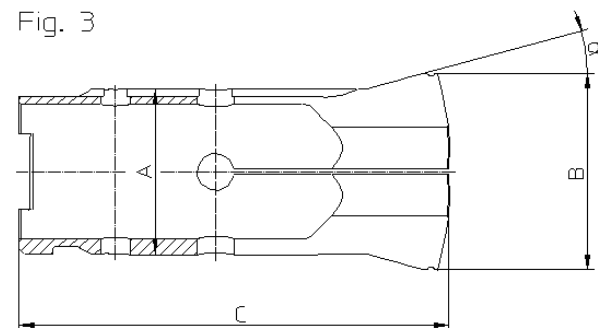


型号 Model	编号 Number	A	B	C	$\alpha$	D min-max	L	图 Fig	
HBR45	72-2037 26)	45	53	116.5	15°	3.00...36.00	-	1	
						36.01...40.99	55		
						41.00...41.99	16		
						42.00...42.99	14		
						43.00...43.99	12		
	44.00...45.00	10							
							3.00...31.00	-	1
							31.01...34.99	55	
							35.00...35.99	16	
							36.00...36.99	14	
						37.00...37.99	12		
						38.00...38.50	10		
	72-2038 26)	45	53	116.5	15°	3.00...36.00	-	2	
36.01...40.99						55			
41.00...41.99						16			
42.00...42.99						14			
43.00...43.99						12			
44.00...45.00	10								
						3.00...31.00	-	2	
						31.01...34.99	55		
						35.00...35.99	16		
						36.00...36.99	14		
						37.00...37.99	12		
						38.00...38.50	10		

26) 按需确认 - On request

6. 快换后拉式夹头  
Quick change pull-type collets

Fig. 3



键槽与孔的顶角对齐  
keyway oriented on the corner of the profile

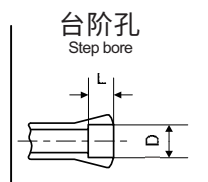
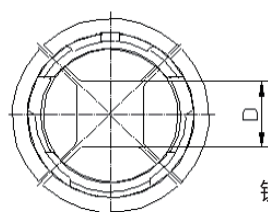
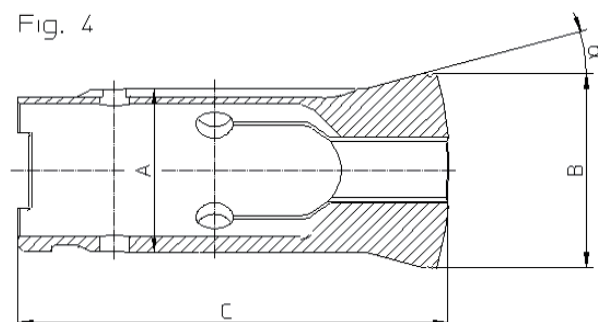
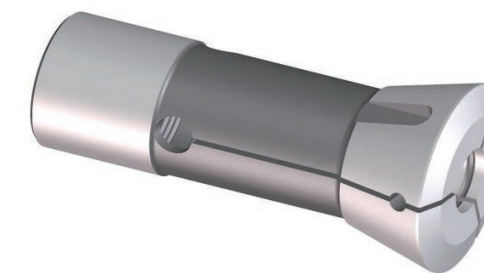
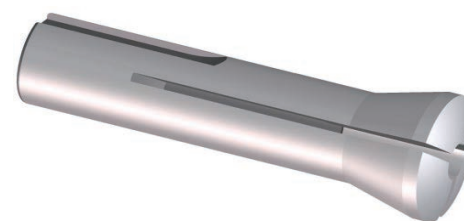


Fig. 4



键槽与孔的边对齐  
keyway oriented on the flat of the profile

6. 后拉式夹头  
Pull-type collets



P型夹头通过拉杆夹紧。

P型夹头与其他后拉式夹头的区别是内螺纹。

推荐在仪表车床和高精度机床上使用。同时也可以在单主轴和多主轴自动车床上使用,在这种情况下,夹头设计稍有变化。

在仪表车床上使用时,夹头张口度很小。为获得最佳的同心度,建议使用与零件公称直径相同的夹头。

P型夹头通常孔内是光滑的。根据不同机床的需求,夹头直径在9mm以上时可在孔内部加槽。

These collets are closed by a drawbar.

These collets differ from the other pull-type collets because of their internal thread.

They are principally recommended for tool room lathes and high precision machines. They are also used on single spindle and multispindle automatics. In this case, their design is slightly modified.

When used on a tool room lathe the collets only open a minimal amount. To obtain optimal concentricity use a collet with the nominal diameter of the part to be clamped.

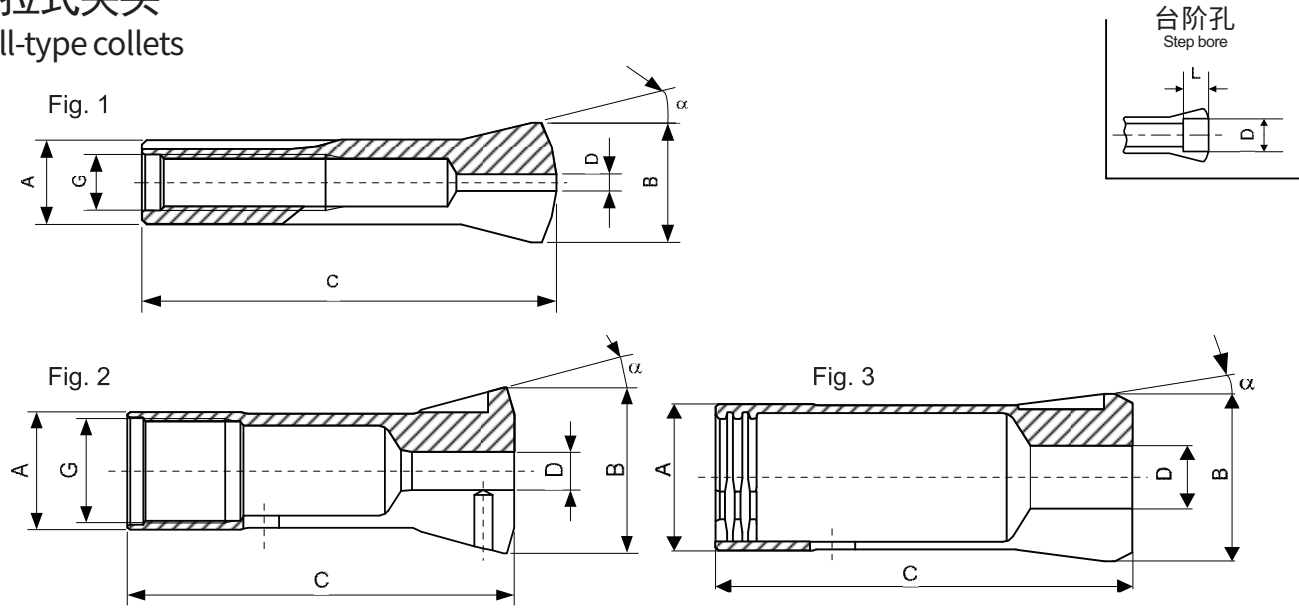
The bore of these collets are generally smooth. Depending on the machines to be used they are available with grooved bores from 9 mm diameter.

型号 Model	编号 Number	A	B	C	$\alpha$	D min-max	L	图 Fig
HBR45	72-2047 26)	45	53	116.5	15°	3.00...25.40	-	3
						25.41...28.99	55	
						29.00...29.99	14	
						30.00...30.99	12	
						31.00...31.75	10	
72-2048 26)	45	53	116.5	15°	3.00...25.40	-	4	
					25.41...28.99	55		
					29.00...29.99	14		
					30.00...30.99	12		
					31.00...31.75	10		

26) 按需确认 - On request



6. 后拉式夹头  
Pull-type collets



型号 Model	编号 Number	A	B	C	G	$\alpha$	D min-max	L	图 Fig
P4.5	78-153	4.5	6.75	22.9	M3.35	15°	0.30...2.50	-	1
							2.51...3.00	8.5	
							3.01...4.00	4	
							4.01...4.50	3	
P5	78-154	5	7	22.9	M3.5	15°	0.30...2.70	-	1
							2.71...3.00	8.5	
							3.01...3.50	12	
							3.51...4.00	4	
P6	78-150	6	8.5	27.2	M4	15°	0.30...3.20	-	1
							3.21...4.50	11.5	
	78-155	6	8.5	24.1	M4	20°	0.30...3.20	-	
							3.21...4.50	8.5	
P9	78-157	9	13.2	39.3	M6	15°	0.30...4.70	-	1
							4.71...7.00	12	
							7.01...8.00	7	
							8.01...9.00	5	
P10	78-228	10	14	39	M7	15°	0.30...5.70	-	1
							5.71...8.00	21.5	
							8.01...8.50	6	
							8.51...9.00	5	
							9.01...9.50	4	
							9.51...10.00	3	
P25	78-334	25	35	75	M22x1	16°	0.50...18.26	-	2
PR28	78-2013	28	32	73	-	8°	2.00...24.50	-	3
PR35.5	78-2012	35.5	40	80	-	8°	2.00...30.00	-	3
P36	78-2007	36	45	107	M33x1.25	16°	2.00...21.00	-	2

标准孔(圆形, 方形, 六角形) 根据价目表。其他孔径按需确认。

Standard bores (round, square, hexagonal) according to price list. Other bores on request.

4. 机床厂家品牌  
The brand of machine

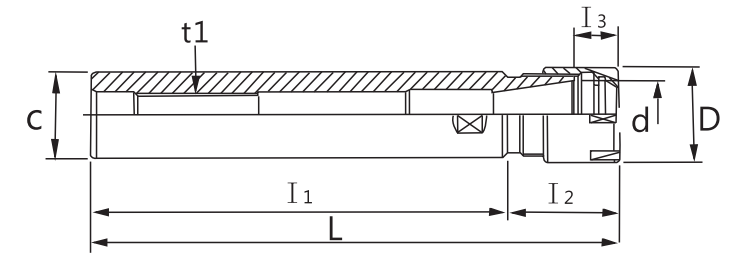
机床厂家品牌 The brand of machine	型号 model	产品编号 Product number					
Walter	B32/45, W20, W25	72-02005, 80-92744,	80-00004, 80-92872,	80-00005, 80-93286	80-00107,	80-00700,	80-02006,
Agathon	B8, B15, W15, W20, W25	72-00137, 80-00700,	72-00139, 80-02006,	80-00003, 80-92744,	80-00004, 80-92872,	80-00005, 80-93285,	80-000107, 80-93286
Anca	B32/45, W20, W25	72-02005, 80-02006,	80-00004, 80-92744,	80-00005, 80-92872,	80-000107, 80-93286	80-00700,	80-00842,
Cincinnati	W20	80-00004,	80-00107,	80-92744,	80-93286		
Christen	F8, P4.5, W20	76-00577,	78-00153,	80-00004,	80-00107,	80-92744	
Dubied	B8, W20	72-00137,	80-00004,	80-00107,	80-92744,	80-93286	
Ewag	W12, W15, W20, W25 W31.75	80-00002, 80-00842, 80-93286	80-00003, 80-02006,	80-00004, 80-02007,	80-00005, 80-92744,	80-00107, 80-92872,	80-00700, 80-93108,
Hydromat	HB32, HB45, HB32/45 HW20, HW25	72-02010,	72-02036,	72-02033,	80-02030,	80-02010	
Jones & shipman	W20, W25	80-00004, 80-92872,	80-00005, 80-93286	80-00107,	80-00700,	80-02006,	80-92744,
Junker Erwin	W20, W25	80-00004, 80-92872,	80-00005, 80-93286	80-00107,	80-00700,	80-02006,	80-92744,
Normac	W20, W25	80-00004, 80-92872,	80-00005, 80-93286	80-00107,	80-00700,	80-02006,	80-92744,
Overbeck	B15	72-00139					
Rollomatic-Landromatic	B8, F8, W15, W20 W25	72-00137, 80-02006,	76-00577, 80-00700,	80-00003, 80-92744,	80-00004, 80-92872,	80-00005, 80-93285,	80-00107, 80-93286
Safag	B8, F4.5, F12, P10, W12, W15, W20, W25	72-00137, 80-00004, 80-92872,	76-00076, 80-00005, 80-93285,	76-00078, 80-00107, 80-93286	78-00228, 80-00700,	80-00002, 80-02006,	80-00003, 80-92744,
Sallaz	B8, W20	72-00137,	80-00004,	80-00107,	80-92744,	80-93286	
Schneeberger	B32/45, ISO40, W20	72-02005,	74-00309,	80-00004,	80-00107,	80-92744	
Spinner	L20, W25	77-00122,	80-00005,	80-00700,	80-02006,	80-92872	
Strausak	B32/45, BCR32, W20	72-02005,	72-93235,	80-00004,	80-00107,	80-92744,	80-93286
Stream	W20	80-00004,	80-00107,	80-92744,	80-93286		
Viking	W25	80-00005,	80-00700,	80-02006,	80-92872		

## 5. 送料机夹头 Feeding machine collet



冠通 (FEDEK)、富豪	冠通 (FEDEK)、富豪中轴	中文 (IEMCA)、错锣中轴套
4#(0.8-4mm)	7#中轴套	SN16#中轴套
7#(1.3-7mm)	7#中轴套 (原厂)	SN19#中轴套
15#(1.5-8.5mm)	15#中轴套	SN20#中轴套
15#加大 (2-10.5mm)	15#中轴套 (培林)	SN23#中轴套
15#特大 (11-13mm)	15#中轴套 (旧型)	SN25#中轴套
20#(3-12.7mm)	15#中轴套 (新型)	SN32#中轴套
20#加大 (11.5-18mm)	15#中轴套D12mm	日本育良中轴
20#特大 (18.5-22mm)	SN20#中轴套	7#(M6*1)
STM326 (18-21mm)	SN23#中轴套	8#(M6*1)
STM326 (21.5-23.5mm)	SN25#中轴套	10#(M6*1)
STM326 (24-26mm)	SN32#中轴套	12#(M6*1)
32#普通 (8-17.5mm)	SN42#中轴套	15#(打 PIN)
32#普通 (18-26mm)	中意、错锣料夹	20#(打 PIN)
32#普通 (26.5-29.5mm)	4#(0.8-4mm)	25#(打 PIN)
32#普通 (30-33mm)	4-7#(0.8-6mm)	32#(打 PIN)
32#普通 (33.5-36mm)	10#(1.5-8.5mm)	日本育良料夹 (BARTOP)
42#(3-23mm)	12#(3-10.8mm)	7#(外径 D=7)
42#(23.5-28mm)	15#(3-14mm)	8#(外径 D=8)
42#(28.5-38mm)	20#(3-16mm)	10#(外径 D=10)
42#(38.5-42.2mm)	25#(4-19mm)	12#(外径 D=12)
42#(4-29mm) 外径32mm	25#(19.5-23mm)	15#(外径 D=15)
42#(20-38mm) 外径40/41mm	32#(4-29mm) D=32 SN12#中轴套	20#(外径 D=18/20)
42#(26.5-38mm) 外径42mm	中意、错锣中轴套	25#(外径 D=25)
51#(42.5-47mm)	SN10#中轴套	32#(外径 D=32)

## 6. C/ER 直柄延长杆组 C/ER Straight shank collet chuck set



### 特点

- 本体可指定削平, 适用于侧边锁固。(另外加价)
- 价格=(筒夹 X 数量)+本体+扳手+包装盒固。
- 本价格以塑料盒计算, 指定木盒差额请外加。
- 套装小孔径筒夹不另外加价。

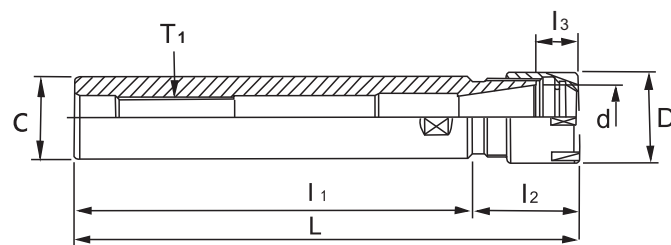
### Features

- Flatten the body can be specified for the side locking. (Another increase).
- Whole set=(ER collet x Qty)+body+spanner+box.
- The prices calculated in plastic boxes, wooden balance please specify plus.
- Collets of small sizes in the whole set are not added price.

规格 Spec	内容物 Contents		重量 (KGS) Weight
	内附筒夹夹持能力 Collet		
C16 x ER16-50 x 9PCS			-
C16 x ER16-100 x 9PCS			-
C16 x ER16-150 x 9PCS	2-10 x 9只	Ø2, Ø3, Ø4, Ø5, Ø6, Ø7, Ø8, Ø9, Ø10,	-
C20 x ER16-50 x 9PCS			-
C20 x ER16-100 x 9PCS			-
C20 x ER16-150 x 9PCS			-
C20 x ER20-60 x 12PCS			-
C20 x ER20-120 x 12PCS	2-13 x 12只	Ø2, Ø3, Ø4, Ø5, Ø6, Ø7, Ø8, Ø9, Ø10, Ø11, Ø12, Ø13,	-
C20 x ER20-180 x 12PCS			-
C20 x ER25-50 x 15PCS	2-16 x 15只	Ø2 ~ Ø16	-
C20 x ER25-100 x 15PCS			2.50
C20 x ER32-50 x 6PCS	6-20 x 6只	Ø6, Ø8, Ø10, Ø12, Ø16, Ø20,	-
C20 x ER32-100 x 6PCS			-
C20 x ER32-50 x 18PCS	3-20 x 18只	Ø3 ~ Ø20	-
C20 x ER32-100 x 18PCS			-
C25 x ER25-50 x 15PCS	2-16 x 15只	Ø2 ~ Ø16	-
C25 x ER25-100 x 15PCS			-
C25 x ER32-50 x 6PCS	6-20 x 6只	Ø6, Ø8, Ø10, Ø12, Ø16, Ø20,	-
C25 x ER32-50 x 18PCS	3-20 x 18只	Ø3 ~ Ø20	-
C25 x ER40-50 x 7PCS	6-25 x 7只	Ø6, Ø8, Ø10, Ø12, Ø16, Ø20, Ø25,	-
C25 x ER40-50 x 23PCS	4-26 x 23只	Ø4 ~ Ø26	-
C32 x ER32-60 x 6PCS	6-20 x 6只	Ø6, Ø8, Ø10, Ø12, Ø16, Ø20,	-
C32 x ER32-60 x 18PCS	3-20 x 18只	Ø3 ~ Ø20	-
C32 x ER40-50 x 7PCS	6-25 x 7只	Ø6, Ø8, Ø10, Ø12, Ø16, Ø20, Ø25,	-
C32 x ER40-50 x 23PCS	4-26 x 23只	Ø4 ~ Ø26	-

### 6. ER单头延长杆 (M小径螺帽)

ER Single extension rod(M style NUT)



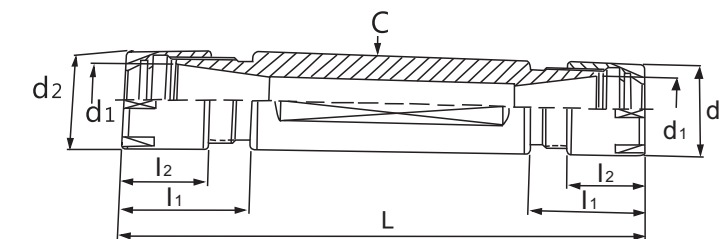
• 本款材质使用抗震能力优越的镍铬钼合金钢

The material is Ni Cr Mo alloy steel that has superior aseismatic capacity

规格 (Version) l <sub>1</sub>	L	l <sub>2</sub>	l <sub>3</sub>	D	T <sub>1</sub>	
C8×ER8M-55	79	24	6	12	M4×0.7P	
C10×ER8M-100	117	17				
C10×ER8M-150	167					
C10×ER8M-180	197					
C12×ER8M-55	72					
C12×ER8M-120	137					
C12×ER8M-180	197					
C12×ER11M-80	96.6					26.5
C16×ER11M-50	66.6					
C16×ER11M-100	116.6					
C16×ER11M-140	156.6					
C16×ER16M-80	117					
C20×ER16M-100	125					
C20×ER16M-140	165	25	10.6	22	M10×1.5P	
C20×ER16M-160	185					
C20×ER20M-60	100					40
C20×ER20M-100	140					
C20×ER20M-120	160					
C20×ER20M-150	190					
C20×ER20M-180	220					
C25×ER20M-140	168	28	11.5	28	M12×1.75P	
C20×ER25M-100	150					
C20×ER25M-100	150	50	12	35		

### 6. 直柄ER双头延长杆

Straight Shank Double ER ended rod



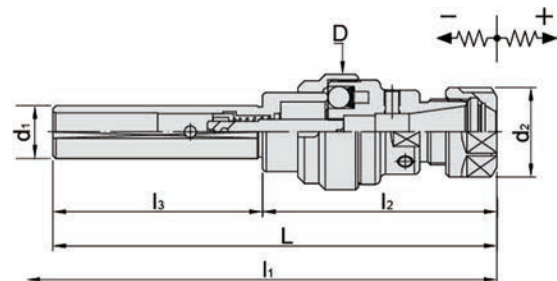
- 内孔同心偏摆精度: 0.005mm (刀具寿命更佳节省);
- 柄径公差: -0.005~0.008mm (使用操作效率高);
- 双头型使用于“退后加工机种”, 复合多功能加工用途;
- 适用于各式CNC车床;
- 选用弹性筒夹可选用三种精度: 普通级0.015mm, A级0.01mm, UP级0.005mm;
- 选用刚性攻牙筒夹与机床控制机能搭配, 可直接接刚性攻牙加工;
- 选用伸缩攻牙筒夹与机床控制机能搭配, 可直接柔性攻牙加工;
- C20适用于相符合于瑞士型机型“TAKMAZ、CITIZEN、MIYANO”品牌;
- C22适用于相符合于瑞士型机型“STAR”品牌;
- C23用于相符合于瑞士型机型“NOMURA”品牌。

- The concentricity of the internal hole is 0.005mm, which extends tool life.
- The tolerance of the chuck's diameter is -0.005-0.008mm with high operation efficiency.
- Double head style is suitable for automatic lathe and multi-purposed processing.
- Suitable for all kinds of CNC lathes.
- Compatible with three kinds of ER collets-0.015mm(Class standard), 0.01mm (Class A) and 0.005mm(Class UP), which are graded by their precision.
- Compatible with ER-TC RIGID TAP COLLETS and control machinery for rigid tap processing.
- Compatible with FLOATING TAP COLLETS and control machinery for soft tap processing.
- TYPE C20 is suitable for the brand, TAKAMAZ CITIZEN MIYANO, conforming to SWISS MODEL.
- TYPE C22 is suitable for the brand, STAR, conforming to SWISS MODEL.
- TYPE C23 is suitable for the brand, NOMURA, conforming to the SWISS MODEL.

规格 (Version)	L	l <sub>2</sub>	l <sub>3</sub>	D	d <sub>1</sub>	d <sub>2</sub>	重量 (KG)
DE20×ER11M-50T	83.2	16.6	12	20	11	16	0.12
DE20×ER11M-75T	108.2						0.12
DE20×ER16M-50T	103.2	26.6	18		16	22	0.10
DE20×ER16M-75T	128.2						0.12
DE22×ER11M-100T	133.2	16.6	12	22	11	16	0.14
DE22×ER16M-100T	153.2	26.6	18		16	22	0.16
DE23×ER11M-100T	133.2	16.6	12	23	11	16	0.18
DE23×ER16M-100T	153.2	26.6	18		16	22	0.21



## 6.ER 直柄伸缩攻牙器 (CNC车床专用) ER Tapper (For cnc lathe)



### 特点

- 使用ER筒夹扶持螺丝攻,配合刚性攻牙筒夹则效果倍增。
- 建议使用HSP螺帽,以增加夹持力。
- TP型内建浮动装置使工作重复定位可自动修复偏差。
- STP型仅可伸缩作用,适合于刚性攻牙。
- 用于刀具不旋转的场合(如:车床、专用机械等)。
- 内附产品使用说明书。

### 注释

- 在加工材料较硬,则m/min应同时变得较慢。
- 在使用直柄伸缩ER攻牙器,请先决定车床主轴运转速度,否则将会因速度太快或太慢而造成柄及攻牙器损坏或破碎。
- $S=V/P$  S=中文主轴转速 V=m/min P=Pitch

### 范例

- 工件材料: S45C, V=400~440
- 牙距=1.5P
- $S=V/P=440/1.5=293\text{rpm}$

L	d1	筒夹 Collet	攻牙能力 Capacity	伸缩量		重量 (KGS) Weight
				伸 (+)	缩 (-)	
159	20	ER20	M3~M16	8mm	5mm	0.50
174.5	32	ER32	M3~M27	10mm		1.60
165	MT3	ER20	M3~M16	-	-	1.40
	MT4					1.60
203.5	MT4	ER32	M3~M27			1.80

### Features

- For use in ER Collet to hold Taps, the range of holding is 1 min. It's able to hold taps in any kind of shanks.
- The body was made of SCM-21 steel, tightening screw has been precision ground.
- Design of telescopic ability, can be weeded out overdo at the same time with main spindle turn in reverse and table fall back, protected workpiece and tap against break.
- Floating assembly, can be automatic to correct deviation of too fast or too slow speed.

### Note

- If the processing material is harder, the m/min should become slower relatively.
- Before using the Straight ER Tapper, please decide spindle running speed of Lathe Machine, otherwise it will make the Shank and Tapping break or split because of too slow speed.
- $S=V/P$  S=Spindle running speed V=m/min P=Pitch

### For Example

- Processing material: S45C, V=400~440.
- Pitch=1.5P
- $S=V/P=440/1.5=293\text{rpm}$

## 6.ER A 级弹性筒夹套装组 ER A Grade collet set



### 特点

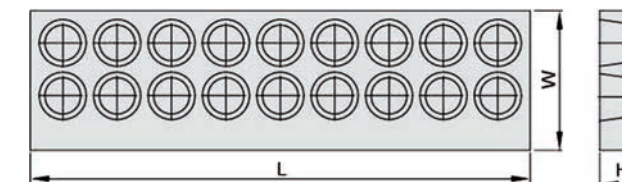
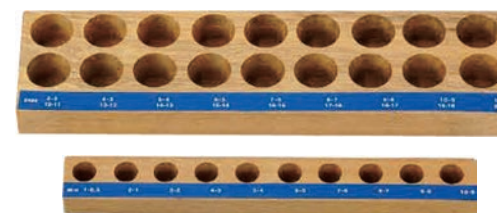
- 表面粗糙度RA0.25,提升刀杆与螺帽贴合度,增强稳定性。
- 表面特殊处理,具较佳防锈功能,延长使用寿命。
- 夹持精度: 0.01mm内。
- 夹持力提升15%

### Features

- Surface roughness Ea 0.25, improves the fitness between chuck and nut and increases the stabilities.
- Special surface treatment provides a better rust-proofing and extend the life cycle.
- Clamping accuracy is within 0.01mm.
- Clamping force improved up by 15%.

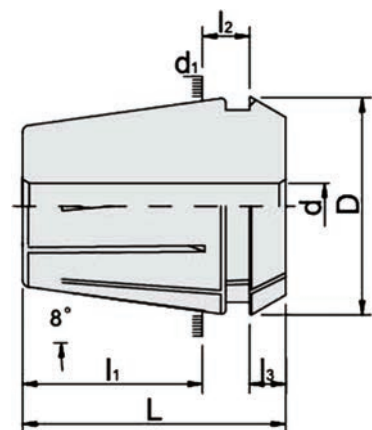
规格 Spec	内容物 Contents		重量 (KGS) Weight
	筒夹 Collet Size	数量 Qty	
ER16 - A - 6P - SET	1,2,4,6,8,10,	1	-
ER20 - A - 6P - SET	2,4,6,8,10,12		-
ER16 - A - 10P - SET	1,2,3,4,5,6,7,8,9,10,		-
ER20 - A - 12P - SET	2,3,4,5,6,7,8,9,10,11,12,13		-

## ER 筒夹木盘 ER COLLET WOODEN TRAYS



规格 Spec	L	W	H	数量(孔) Qty	重量 (KGS) Weight
ER 8 - MV	210	20	13	9	0.01
ER 11 - MV				13	0.01
ER 16 - MV	275	35	22	10	0.14
ER 20 - MV				12	0.12
ER 25 - MV				16	0.18
ER 32 - MV	340	90	30	18	0.48
ER 40 - MV	265	210	38	24	0.76
ER 50 - MV	235			37	12

## 6.C/ER 弹性筒夹 C/ER Collet



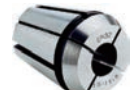
### 特点

- 材质: SUJ2. (高碳轴承钢: 在热处理后, 具有坚韧的硬度与韧性, 更好的耐磨耗性, 且弹性佳使用寿命更长)。
- 硬度: HRC46°
- 表面粗糙度RZ2.5以内。
- ER8的夹持范围为0.5mm; ER11、16、20、25、32、40的夹持范围为1mm, 但孔径2.5mm以下, 夹持范围为0.5mm。
- 同心度按DIN标准规范全数检验, 共计有三种精度等级, 普通级: 0.02mm、A级0.01mm及UP级0.005mm。
- UP级建议配合HSP螺帽使用, 其稳定性更好。
- 用于夹持钻头、螺丝攻、铣刀、铰刀等工具。
- 具有弹性伸缩的功能、应用范围广、附变化性。
- 订购时请告知所需精度等级。

### Features

- Steel: SUJ2 (High-carbon bearing steel: After heat treatment, it has hardness and toughness, better grinding quality, good flexibility, and longer using life span.)
- HRC46
- Surface roughness: within RZ2.5
- Chucking range: ER8=0.5mm; ER11 16 20 25 32 40=1mm. But if the internal hole is less than 2.5mm, the chucking range will be 0.5mm.
- The concentricity is totally examined according to DIN norm. There are three kinds of classes for precision: general class 0.02mm, A class 0.01mm, and up class 0.005mm.
- UP class is recommended to be used with HSP clamping nut. It will have better stability.
- It is used for the cutting tools like drills, taps, mills, and reamers, etc.
- It has flexibility and can be applied widely and variably.
- Please inform the required precision when ordering.

规格 Spec	规尺寸范围 Size Range	L	l <sub>1</sub>	l <sub>2</sub>	l <sub>3</sub>	D	d <sub>1</sub>	d <sub>2</sub>	重量 (KGS) Weight
ER 8	1~5.0	13.5	10.8	2.98	1.5	8.5	8	6.5	0.01
ER 11	1~7.0	18	13.5	3.8	2.5	11.5	11	9.5	0.01
ER 16	1~10.0	27.5	20.8	6.26	4	17	16	13.8	0.03
ER 20	2~13.0	31.5	23.9	6.36	4.8	21	20	17.4	0.04
ER 25	2~16.0	34	25.9	6.66	5	26	25	22	0.06
ER 32	3~20.0	40	30.9	7.16	5.5	33	32	29.2	0.10
ER 40	4~26.0	46	34.9	7.66	7	41	40	36.2	0.25
ER 50	6~34.0	60	46	13.4	8.5	52	50	46	0.45



## 6.ER 普通级弹性筒夹 ER Ordinary grade collet

### ER8

规格 Spec	夹持范围 Range	精度等级 Precision
ER8 - 1	1 0.5	0.02
ER8 - 1.5	1.5 1	
ER8 - 2	2 1.5	
ER8 - 2.5	2.5 2	
ER8 - 3	3 2.5	
ER8 - 3.5	3.5 3	
ER8 - 4	4 3.5	
ER8 - 4.5	4.5 4	
ER8 - 5	5 4.5	

### ER11

规格 Spec	夹持范围 Range	精度等级 Precision
ER11 - 1	1 0.5	0.02
ER11 - 1.5	1.5 1	
ER11 - 2	2 1.5	
ER11 - 2.5	2.5 2	
ER11 - 3	3 2	
ER11 - 3.5	3.5 2.5	
ER11 - 4	4 3	
ER11 - 4.5	4.5 3.5	
ER11 - 5	5 4	
ER11 - 5.5	5.5 4.5	
ER11 - 6	6 5	
ER11 - 6.5	6.5 5.5	
ER11 - 7	7 6	

### ER16

规格 Spec	夹持范围 Range	精度等级 Precision
ER16 - 1	1 0.5	0.02
ER16 - 1.5	1.5 1	
ER16 - 2	2 1.5	
ER16 - 2.5	2.5 2	
ER16 - 3	3 2	
ER16 - 3.5	3.5 2.5	
ER16 - 4	4 3	
ER16 - 4.5	4.5 3.5	
ER16 - 5	5 4	
ER16 - 5.5	5.5 4.5	
ER16 - 6	6 5	
ER16 - 6.5	6.5 5.5	

### ER16

规格 Spec	夹持范围 Range	精度等级 Precision
ER16 - 7	7 6	0.02
ER16 - 7.5	7.5 6.5	
ER16 - 8	8 7	
ER16 - 8.5	8.5 7.5	
ER16 - 9	9 8	
ER16 - 9.5	9.5 8.5	
ER16 - 10	10 9	

### ER20

规格 Spec	夹持范围 Range	精度等级 Precision
ER20 - 1	1 0.5	0.02
ER20 - 1.5	1.5 1	
ER20 - 2	2 1.5	
ER20 - 2.5	2.5 2	
ER20 - 3	3 2	
ER20 - 3.5	3.5 2.5	
ER20 - 4	4 3	
ER20 - 4.5	4.5 3.5	
ER20 - 5	5 4	
ER20 - 5.5	5.5 4.5	
ER20 - 6	6 5	
ER20 - 6.5	6.5 5.5	
ER20 - 7	7 6	
ER20 - 7.5	7.5 6.5	
ER20 - 8	8 7	
ER20 - 8.5	8.5 7.5	
ER20 - 9	9 8	
ER20 - 9.5	9.5 8.5	
ER20 - 10	10 9	
ER20 - 10.5	10.5 9.5	
ER20 - 11	11 10	
ER20 - 11.5	11.5 10.5	
ER20 - 12	12 11	
ER20 - 12.5	12.5 11.5	
ER20 - 13	13 12	

### ER25

规格 Spec	夹持范围 Range	精度等级 Precision
ER25 - 1	1 0.5	0.02
ER25 - 1.5	1.5 1	

### ER25

规格 Spec	夹持范围 Range	精度等级 Precision
ER25 - 2	2 1.5	0.02
ER25 - 2.5	2.5 2	
ER25 - 3	3 2	
ER25 - 3.5	3.5 2.5	
ER25 - 4	4 3	
ER25 - 4.5	4.5 3.5	
ER25 - 5	5 4	
ER25 - 5.5	5.5 4.5	
ER25 - 6	6 5	
ER25 - 6.5	6.5 5.5	
ER25 - 7	7 6	
ER25 - 7.5	7.5 6.5	
ER25 - 8	8 7	
ER25 - 8.5	8.5 7.5	
ER25 - 9	9 8	
ER25 - 9.5	9.5 8.5	
ER25 - 10	10 9	
ER25 - 10.5	10.5 9.5	
ER25 - 11	11 10	
ER25 - 11.5	11.5 10.5	
ER25 - 12	12 11	
ER25 - 12.5	12.5 11.5	
ER25 - 13	13 12	
ER25 - 13.5	13.5 12.5	
ER25 - 14	14 13	
ER25 - 14.5	14.5 13.5	
ER25 - 15	15 14	
ER25 - 15.5	15.5 14.5	
ER25 - 16	16 15	

### ER32

规格 Spec	夹持范围 Range	精度等级 Precision
ER32 - 2	2 1.5	0.02
ER32 - 2.5	2.5 2	
ER32 - 3	3 2	
ER32 - 3.5	3.5 3	
ER32 - 4	4 3.5	
ER32 - 4.5	4.5 3.5	
ER32 - 5	5 4	

## 6.ER 普通级弹性筒夹 ER Ordinary grade collet

### ▶ER32

规格 Spec	夹持范围 Range	精度等级 Precision
ER32-5.5	5.5 4.5	0.02
ER32-6	6 5	
ER32-6.5	6.5 5.5	
ER32-7	7 6	
ER32-7.5	7.5 6.5	
ER32-8	8 7	
ER32-8.5	8.5 7.5	
ER32-9	9 8	
ER32-9.5	9.5 8.5	
ER32-10	10 9	
ER32-10.5	10.5 9.5	
ER32-11	11 10	
ER32-11.5	11.5 10.5	
ER32-12	12 11	
ER32-12.5	12.5 11.5	
ER32-13	13 12	
ER32-13.5	13.5 12.5	
ER32-14	14 13	
ER32-14.5	14.5 13.5	
ER32-15	15 14	
ER32-15.5	15.5 14.5	
ER32-16	16 15	
ER32-16.5	16.5 15.5	
ER32-17	17 16	
ER32-17.5	17.5 16.5	
ER32-18	18 17	
ER32-18.5	18.5 17.5	
ER32-19	19 18	
ER32-19.5	19.5 18.5	
ER32-20	20 19	

### ▶ER40

规格 Spec	夹持范围 Range	精度等级 Precision
ER40-3	3 2	0.02
ER40-3.5	3.5 2.5	
ER40-4	4 3	
ER40-4.5	4.5 3.5	
ER40-5	5 4	
ER40-5.5	5.5 4.5	

### ▶ER40

规格 Spec	夹持范围 Range	精度等级 Precision
ER40-6	6 5	0.02
ER40-6.5	6.5 5.5	
ER40-7	7 6	
ER40-7.5	7.5 6.5	
ER40-8	8 7	
ER40-8.5	8.5 7.5	
ER40-9	9 8	
ER40-9.5	9.5 8.5	
ER40-10	10 9	
ER40-10.5	10.5 9.5	
ER40-11	11 10	
ER40-11.5	11.5 10.5	
ER40-12	12 11	
ER40-12.5	12.5 11.5	
ER40-13	13 12	
ER40-13.5	13.5 12.5	
ER40-14	14 13	
ER40-14.5	14.5 13.5	
ER40-15	15 14	
ER40-15.5	15.5 14.5	
ER40-16	16 15	
ER40-16.5	16.5 15.5	
ER40-17	17 16	
ER40-17.5	17.5 16.5	
ER40-18	18 17	
ER40-18.5	18.5 17.5	
ER40-19	19 18	
ER40-19.5	19.5 18.5	
ER40-20	20 19	
ER40-20.5	20.5 19.5	
ER40-21	21 20	
ER40-21.5	21.5 20.5	
ER40-22	22 21	
ER40-22.5	22.5 21.5	
ER40-23	23 22	
ER40-23.5	23.5 22.5	
ER40-24	24 23	
ER40-24.5	24.5 23.5	
ER40-25	25 24	

### ▶ER40

规格 Spec	夹持范围 Range	精度等级 Precision
ER40-25.5	25.5 24.5	0.02
ER40-26	26 25	

### ▶ER50

规格 Spec	夹持范围 Range	精度等级 Precision
ER50-6	6 5	0.02
ER50-7	7 6	
ER50-8	8 7	
ER50-9	9 8	
ER50-10	10 9	
ER50-11	11 9	
ER50-12	12 10	
ER50-13	13 11	
ER50-14	14 12	
ER50-15	15 13	
ER50-16	16 14	
ER50-17	17 15	
ER50-18	18 16	
ER50-19	19 17	
ER50-20	20 18	
ER50-21	21 19	
ER50-22	22 20	
ER50-23	23 21	
ER50-24	24 22	
ER50-25	25 23	
ER50-26	26 24	
ER50-27	27 25	
ER50-28	28 26	
ER50-29	29 27	
ER50-30	30 28	
ER50-31	31 29	
ER50-32	32 30	
ER50-33	33 31	
ER50-34	34 32	

## 6.ER A 级弹性筒夹 ER A Grade collet

### ▶ER8-A

规格 Spec	夹持范围 Range	精度等级 Precision
ER8-1-A	1 0.5	0.01
ER8-1.5-A	1.5 1	
ER8-2-A	2 1.5	
ER8-2.5-A	2.5 2	
ER8-3-A	3 2.5	
ER8-3.5-A	3.5 3	
ER8-4-A	4 3.5	
ER8-4.5-A	4.5 4	
ER8-5-A	5 4.5	

### ▶ER11-A

规格 Spec	夹持范围 Range	精度等级 Precision
ER11-1-A	1 0.5	0.01
ER11-1.5-A	1.5 1	
ER11-2-A	2 1.5	
ER11-2.5-A	2.5 2	
ER11-3-A	3 2	
ER11-3.5-A	3.5 2.5	
ER11-4-A	4 3	
ER11-4.5-A	4.5 3.5	
ER11-5-A	5 4	
ER11-5.5-A	5.5 4.5	
ER11-6-A	6 5	
ER11-6.5-A	6.5 5.5	
ER11-7-A	7 6	

### ▶ER16-A

规格 Spec	夹持范围 Range	精度等级 Precision
ER16-1-A	1 0.5	0.01
ER16-1.5-A	1.5 1	
ER16-2-A	2 1.5	
ER16-2.5-A	2.5 2	
ER16-3-A	3 2	
ER16-3.5-A	3.5 2.5	
ER16-4-A	4 3	
ER16-4.5-A	4.5 3.5	
ER16-5-A	5 4	
ER16-5.5-A	5.5 4.5	
ER16-6-A	6 5	
ER16-6.5-A	6.5 5.5	

### ▶ER16-A

规格 Spec	夹持范围 Range	精度等级 Precision
ER16-7-A	7 6	0.01
ER16-7.5-A	7.5 6.5	
ER16-8-A	8 7	
ER16-8.5-A	8.5 7.5	
ER16-9-A	9 8	
ER16-9.5-A	9.5 8.5	
ER16-10-A	10 9	

### ▶ER20-A

规格 Spec	夹持范围 Range	精度等级 Precision
ER20-1-A	1 0.5	0.01
ER20-1.5-A	1.5 1	
ER20-2-A	2 1.5	
ER20-2.5-A	2.5 2	
ER20-3-A	3 2	
ER20-3.5-A	3.5 2.5	
ER20-4-A	4 3	
ER20-4.5-A	4.5 3.5	
ER20-5-A	5 4	
ER20-5.5-A	5.5 4.5	
ER20-6-A	6 5	
ER20-6.5-A	6.5 5.5	
ER20-7-A	7 6	
ER20-7.5-A	7.5 6.5	
ER20-8-A	8 7	
ER20-8.5-A	8.5 7.5	
ER20-9-A	9 8	
ER20-9.5-A	9.5 8.5	
ER20-10-A	10 9	
ER20-10.5-A	10.5 9.5	
ER20-11-A	11 10	
ER20-11.5-A	11.5 10.5	
ER20-12-A	12 11	
ER20-12.5-A	12.5 11.5	
ER20-13-A	13 12	

### ▶ER25-A

规格 Spec	夹持范围 Range	精度等级 Precision
ER25-1-A	1 0.5	0.01
ER25-1.5-A	1.5 1	

### ▶ER25-A

规格 Spec	夹持范围 Range	精度等级 Precision
ER25-2-A	2 1.5	0.01
ER25-2.5-A	2.5 2	
ER25-3-A	3 2	
ER25-3.5-A	3.5 2.5	
ER25-4-A	4 3	
ER25-4.5-A	4.5 3.5	
ER25-5-A	5 4	
ER25-5.5-A	5.5 4.5	
ER25-6-A	6 5	
ER25-6.5-A	6.5 5.5	
ER25-7-A	7 6	
ER25-7.5-A	7.5 6.5	
ER25-8-A	8 7	
ER25-8.5-A	8.5 7.5	
ER25-9-A	9 8	
ER25-9.5-A	9.5 8.5	
ER25-10-A	10 9	
ER25-10.5-A	10.5 9.5	
ER25-11-A	11 10	
ER25-11.5-A	11.5 10.5	
ER25-12-A	12 11	
ER25-12.5-A	12.5 11.5	
ER25-13-A	13 12	
ER25-13.5-A	13.5 12.5	
ER25-14-A	14 13	
ER25-14.5-A	14.5 13.5	
ER25-15-A	15 14	
ER25-15.5-A	15.5 14.5	
ER25-16-A	16 15	

### ▶ER32-A

规格 Spec	夹持范围 Range	精度等级 Precision
ER32-2-A	2 1.5	0.01
ER32-2.5-A	2.5 2	
ER32-3-A	3 2	
ER32-3.5-A	3.5 2.5	
ER32-4-A	4 3	
ER32-4.5-A	4.5 3.5	
ER32-5-A	5 4	



## 6.ER A 级弹性筒夹

ER A Grade collet

### ▶ER32-A

规格 Spec	夹持范围 Range	精度等级 Precision
ER32-5.5-A	5.5 4.5	0.01
ER32-6-A	6 5	
ER32-6.5-A	6.5 5.5	
ER32-7-A	7 6	
ER32-7.5-A	7.5 6.5	
ER32-8-A	8 7	
ER32-8.5-A	8.5 7.5	
ER32-9-A	9 8	
ER32-9.5-A	9.5 8.5	
ER32-10-A	10 9	
ER32-10.5-A	10.5 9.5	
ER32-11-A	11 10	
ER32-11.5-A	11.5 10.5	
ER32-12-A	12 11	
ER32-12.5-A	12.5 11.5	
ER32-13-A	13 12	
ER32-13.5-A	13.5 12.5	
ER32-14-A	14 13	
ER32-14.5-A	14.5 13.5	
ER32-15-A	15 14	
ER32-15.5-A	15.5 14.5	
ER32-16-A	16 15	
ER32-16.5-A	16.5 15.5	
ER32-17-A	17 16	
ER32-17.5-A	17.5 16.5	
ER32-18-A	18 17	
ER32-18.5-A	18.5 17.5	
ER32-19-A	19 18	
ER32-19.5-A	19.5 18.5	
ER32-20-A	20 19	

### ▶ER40-A

规格 Spec	夹持范围 Range	精度等级 Precision
ER40-3-A	3 2	0.01
ER40-3.5-A	3.5 2.5	
ER40-4-A	4 3	
ER40-4.5-A	4.5 3.5	
ER40-5-A	5 4	
ER40-5.5-A	5.5 4.5	

### ▶ER40-A

规格 Spec	夹持范围 Range	精度等级 Precision
ER40-6-A	6 5	0.01
ER40-6.5-A	6.5 5.5	
ER40-7-A	7 6	
ER40-7.5-A	7.5 6.5	
ER40-8-A	8 7	
ER40-8.5-A	8.5 7.5	
ER40-9-A	9 8	
ER40-9.5-A	9.5 8.5	
ER40-10-A	10 9	
ER40-10.5-A	10.5 9.5	
ER40-11-A	11 10	0.01
ER40-11.5-A	11.5 10.5	
ER40-12-A	12 11	
ER40-12.5-A	12.5 11.5	
ER40-13-A	13 12	
ER40-13.5-A	13.5 12.5	
ER40-14-A	14 13	
ER40-14.5	14.5 13.5	
ER40-15-A	15 14	
ER40-15.5-A	15.5 14.5	
ER40-16-A	16 15	0.01
ER40-16.5-A	16.5 15.5	
ER40-17-A	17 16	
ER40-17.5-A	17.5 16.5	
ER40-18-A	18 17	
ER40-18.5-A	18.5 17.5	
ER40-19-A	19 18	
ER40-19.5-A	19.5 18.5	
ER40-20-A	20 19	
ER40-20.5-A	20.5 19.5	
ER40-21-A	21 20	0.01
ER40-21.5-A	21.5 20.5	
ER40-22-A	22 21	
ER40-22.5-A	22.5 21.5	
ER40-23-A	23 22	
ER40-23.5-A	23.5 22.5	
ER40-24-A	24 23	
ER40-24.5-A	24.5 23.5	
ER40-25-A	25 24	

### ▶ER40-A

规格 Spec	夹持范围 Range	精度等级 Precision
ER40-25.5-A	25.5 24.5	0.01
ER40-26-A	26 25	

### ▶ER50-A

规格 Spec	夹持范围 Range	精度等级 Precision
ER50-6-A	6 5	0.01
ER50-7-A	7 6	
ER50-8-A	8 7	
ER50-9-A	9 8	
ER50-10-A	10 9	
ER50-11-A	11 9	
ER50-12-A	12 10	
ER50-13-A	13 11	
ER50-14-A	14 12	
ER50-15-A	15 13	
ER50-16-A	16 14	0.01
ER50-17-A	17 15	
ER50-18-A	18 16	
ER50-19-A	19 17	
ER50-20-A	20 18	
ER50-21-A	21 19	
ER50-22-A	22 20	
ER50-23-A	23 21	
ER50-24-A	24 22	
ER50-25-A	25 23	
ER50-26-A	26 24	0.01
ER50-27-A	27 25	
ER50-28-A	28 26	
ER50-29-A	29 27	
ER50-30-A	30 28	
ER50-31-A	31 29	
ER50-32-A	32 30	
ER50-33-A	33 31	
ER50-34-A	34 32	

## 6.ER UP 级弹性筒夹

ER UP Grade collet

### ▶ER8-UP

规格 Spec	夹持范围 Range	精度等级 Precision
ER8-1-UP	1 0.5	0.005
ER8-1.5-UP	1.5 1	
ER8-2-UP	2 1.5	
ER8-2.5-UP	2.5 2	
ER8-3-UP	3 2.5	
ER8-3.5-UP	3.5 3	
ER8-4-UP	4 3.5	
ER8-4.5-UP	4.5 4	
ER8-5-UP	5 4.5	

### ▶ER11-UP

规格 Spec	夹持范围 Range	精度等级 Precision
ER11-1-UP	1 0.5	0.005
ER11-1.5-UP	1.5 1	
ER11-2-UP	2 1.5	
ER11-2.5-UP	2.5 2	
ER11-3-UP	3 2	
ER11-3.5-UP	3.5 2.5	
ER11-4-UP	4 3	
ER11-4.5-UP	4.5 3.5	
ER11-5-UP	5 4	
ER11-5.5-UP	5.5 4.5	
ER11-6-UP	6 5	
ER11-6.5-UP	6.5 5.5	
ER11-7-UP	7 6	

### ▶ER16-UP

规格 Spec	夹持范围 Range	精度等级 Precision
ER16-1-UP	1 0.5	0.005
ER16-1.5-UP	1.5 1	
ER16-2-UP	2 1.5	
ER16-2.5-UP	2.5 2	
ER16-3-UP	3 2	
ER16-3.5-UP	3.5 2.5	
ER16-4-UP	4 3	
ER16-4.5-UP	4.5 3.5	
ER16-5-UP	5 4	
ER16-5.5-UP	5.5 4.5	
ER16-6-UP	6 5	
ER16-6.5-UP	6.5 5.5	

### ▶ER16-UP

规格 Spec	夹持范围 Range	精度等级 Precision
ER16-7-UP	7 6	0.005
ER16-7.5-UP	7.5 6.5	
ER16-8-UP	8 7	
ER16-8.5-UP	8.5 7.5	
ER16-9-UP	9 8	
ER16-9.5-UP	9.5 8.5	
ER16-10-UP	10 9	

### ▶ER20-UP

规格 Spec	夹持范围 Range	精度等级 Precision
ER20-1-UP	1 0.5	0.005
ER20-1.5-UP	1.5 1	
ER20-2-UP	2 1.5	
ER20-2.5-UP	2.5 2	
ER20-3-UP	3 2	
ER20-3.5-UP	3.5 2.5	
ER20-4-UP	4 3	
ER20-4.5-UP	4.5 3.5	
ER20-5-UP	5 4	
ER20-5.5-UP	5.5 4.5	
ER20-6-UP	6 5	
ER20-6.5-UP	6.5 5.5	
ER20-7-UP	7 6	
ER20-7.5-UP	7.5 6.5	
ER20-8-UP	8 7	
ER20-8.5-UP	8.5 7.5	
ER20-9-UP	9 8	
ER20-9.5-UP	9.5 8.5	
ER20-10-UP	10 9	
ER20-10.5-UP	10.5 9.5	
ER20-11-UP	11 10	
ER20-11.5-UP	11.5 10.5	
ER20-12-UP	12 11	
ER20-12.5-UP	12.5 11.5	
ER20-13-UP	13 12	

### ▶ER25-UP

规格 Spec	夹持范围 Range	精度等级 Precision
ER25-2-UP	2 1.5	0.005
ER25-2.5-UP	2.5 2	
ER25-3-UP	3 2	
ER25-3.5-UP	3.5 2.5	
ER25-4-UP	4 3	
ER25-4.5-UP	4.5 3.5	
ER25-5-UP	5 4	
ER25-5.5-UP	5.5 4.5	
ER25-6-UP	6 5	
ER25-6.5-UP	6.5 5.5	
ER25-7-UP	7 6	
ER25-7.5-UP	7.5 6.5	
ER25-8-UP	8 7	
ER25-8.5-UP	8.5 7.5	
ER25-9-UP	9 8	
ER25-9.5-UP	9.5 8.5	
ER25-10-UP	10 9	
ER25-10.5-UP	10.5 9.5	
ER25-11-UP	11 10	
ER25-11.5-UP	11.5 10.5	
ER25-12-UP	12 11	
ER25-12.5-UP	12.5 11.5	
ER25-13-UP	13 12	
ER25-13.5-UP	13.5 12.5	
ER25-14-UP	14 13	
ER25-14.5-UP	14.5 13.5	
ER25-15-UP	15 14	
ER25-15.5-UP	15.5 14.5	
ER25-16-UP	16 15	

### ▶ER32-UP

规格 Spec	夹持范围 Range	精度等级 Precision
ER32-2-UP	2 1.5	0.005
ER32-2.5-UP	2.5 2	
ER32-3-UP	3 2	
ER32-3.5-UP	3.5 2.5	
ER32-4-UP	4 3	
ER32-4.5-UP	4.5 3.5	
ER32-5-UP	5 4	

## 6.ER UP 级弹性筒夹 ER UP Grade collet

### ▶ER32-UP

规格 Spec	夹持范围 Range	精度等级 Precision
ER32-5.5-UP	5.5 4.5	0.005
ER32-6-UP	6 5	
ER32-6.5-UP	6.5 5.5	
ER32-7-UP	7 6	
ER32-7.5-UP	7.5 6.5	
ER32-8-UP	8 7	
ER32-8.5-UP	8.5 7.5	
ER32-9-UP	9 8	
ER32-9.5-UP	9.5 8.5	
ER32-10-UP	10 9	
ER32-10.5-UP	10.5 9.5	
ER32-11-UP	11 10	
ER32-11.5-UP	11.5 10.5	
ER32-12-UP	12 11	
ER32-12.5-UP	12.5 11.5	
ER32-13-UP	13 12	
ER32-13.5-UP	13.5 12.5	
ER32-14-UP	14 13	
ER32-14.5-UP	14.5 13.5	
ER32-15-UP	15 14	
ER32-15.5-UP	15.5 14.5	
ER32-16-UP	16 15	
ER32-16.5-UP	16.5 15.5	
ER32-17-UP	17 16	
ER32-17.5-UP	17.5 16.5	
ER32-18-UP	18 17	
ER32-18.5-UP	18.5 17.5	
ER32-19-UP	19 18	
ER32-19.5-UP	19.5 18.5	
ER32-20-UP	20 19	

### ▶ER40-UP

规格 Spec	夹持范围 Range	精度等级 Precision
ER40-3-UP	3 2	0.005
ER40-3.5-UP	3.5 2.5	
ER40-4-UP	4 3	
ER40-4.5-UP	4.5 3.5	
ER40-5-UP	5 4	
ER40-5.5-UP	5.5 4.5	

### ▶ER40-UP

规格 Spec	夹持范围 Range	精度等级 Precision
ER40-6-UP	6 5	0.005
ER40-6.5-UP	6.5 5.5	
ER40-7-UP	7 6	
ER40-7.5-UP	7.5 6.5	
ER40-8-UP	8 7	
ER40-8.5-UP	8.5 7.5	
ER40-9-UP	9 8	
ER40-9.5-UP	9.5 8.5	
ER40-10-UP	10 9	
ER40-10.5-UP	10.5 9.5	
ER40-11-UP	11 10	
ER40-11.5-UP	11.5 10.5	
ER40-12-UP	12 11	
ER40-12.5-UP	12.5 11.5	
ER40-13-UP	13 12	
ER40-13.5-UP	13.5 12.5	
ER40-14-UP	14 13	
ER40-14.5-UP	14.5 13.5	
ER40-15-UP	15 14	
ER40-15.5-UP	15.5 14.5	
ER40-16-UP	16 15	
ER40-16.5-UP	16.5 15.5	
ER40-17-UP	17 16	
ER40-17.5-UP	17.5 16.5	
ER40-18-UP	18 17	
ER40-18.5-UP	18.5 17.5	
ER40-19-UP	19 18	
ER40-19.5-UP	19.5 18.5	
ER40-20-UP	20 19	
ER40-20.5-UP	20.5 19.5	
ER40-21-UP	21 20	
ER40-21.5-UP	21.5 20.5	
ER40-22-UP	22 21	
ER40-22.5-UP	22.5 21.5	
ER40-23-UP	23 22	
ER40-23.5-UP	23.5 22.5	
ER40-24-UP	24 23	
ER40-24.5-UP	24.5 23.5	
ER40-25-UP	25 24	

### ▶ER40-UP

规格 Spec	夹持范围 Range	精度等级 Precision
ER40-25.5-UP	25.5 24.5	0.005
ER40-26-UP	26 25	

### ▶ER50-UP

规格 Spec	夹持范围 Range	精度等级 Precision
ER50-6-UP	6 5	0.005
ER50-7-UP	7 6	
ER50-8-UP	8 7	
ER50-9-UP	9 8	
ER50-10-UP	10 9	
ER50-11-UP	11 9	
ER50-12-UP	12 10	
ER50-13-UP	13 11	
ER50-14-UP	14 12	
ER50-15-UP	15 13	
ER50-16-UP	16 14	
ER50-17-UP	17 15	
ER50-18-UP	18 16	
ER50-19-UP	19 17	
ER50-20-UP	20 18	
ER50-21-UP	21 19	
ER50-22-UP	22 20	
ER50-23-UP	23 21	
ER50-24-UP	24 22	
ER50-25-UP	25 23	
ER50-26-UP	26 24	
ER50-27-UP	27 25	
ER50-28-UP	28 26	
ER50-29-UP	29 27	
ER50-30-UP	30 28	
ER50-31-UP	31 29	
ER50-32-UP	32 30	
ER50-33-UP	33 31	
ER50-34-UP	34 32	

## 6.ER 弹性筒夹 (英制) ER Collet (inch size)

### ▶ER8

规格 Spec	夹持范围 Range
ER8-1/16	0.043 0.062
ER8-1/8	0.086 0.125
ER8-3/16	0.148 0.187

### ▶ER11

规格 Spec	夹持范围 Range
ER11-1/16	0.043 0.062
ER11-3/32	0.054 0.093
ER11-1/8	0.086 0.125
ER11-5/32	0.117 0.156
ER11-3/16	0.148 0.187
ER11-7/32	0.179 0.218
ER11-1/4	0.211 0.250

### ▶ER16

规格 Spec	夹持范围 Range
ER16-1/16	0.043 0.062
ER16-3/32	0.054 0.093
ER16-1/8	0.086 0.125
ER16-5/32	0.117 0.156
ER16-3/16	0.148 0.187
ER16-7/32	0.179 0.218
ER16-1/4	0.211 0.250
ER16-9/32	0.242 0.281
ER16-5/16	0.283 0.312
ER16-11/32	0.304 0.343
ER16-3/8	0.336 0.375
ER16-13/32	0.367 0.406

### ▶ER20

规格 Spec	夹持范围 Range
ER20-1/16	0.043 0.062
ER20-3/32	0.054 0.093
ER20-1/8	0.086 0.125
ER20-5/32	0.117 0.156
ER20-3/16	0.148 0.187
ER20-7/32	0.179 0.218
ER20-1/4	0.211 0.250
ER20-9/32	0.242 0.281
ER20-5/16	0.283 0.312
ER20-11/32	0.304 0.343
ER20-3/8	0.336 0.375
ER20-13/32	0.367 0.406
ER20-7/16	0.398 0.437
ER20-15/32	0.429 0.468
ER20-1/2	0.461 0.500

### ▶ER25

规格 Spec	夹持范围 Range
ER25-3/32	0.054 0.093
ER25-1/8	0.086 0.125
ER25-5/32	0.117 0.156
ER25-3/16	0.148 0.187
ER25-7/32	0.179 0.218
ER25-1/4	0.211 0.250
ER25-9/32	0.242 0.281
ER25-5/16	0.283 0.312
ER25-11/32	0.304 0.343
ER25-3/8	0.336 0.375
ER25-13/32	0.367 0.406
ER25-7/16	0.398 0.437
ER25-15/32	0.429 0.468
ER25-1/2	0.461 0.500
ER25-17/32	0.492 0.531
ER25-9/16	0.523 0.562
ER25-19/32	0.554 0.593
ER25-5/8	0.586 0.625

### ▶ER32

规格 Spec	夹持范围 Range
ER32-1/16	0.043 0.062
ER32-3/32	0.054 0.093
ER32-1/8	0.086 0.125
ER32-5/32	0.117 0.156
ER32-3/16	0.148 0.187
ER32-7/32	0.179 0.218
ER32-1/4	0.211 0.250
ER32-9/32	0.242 0.281
ER32-5/16	0.283 0.312
ER32-11/32	0.304 0.343
ER32-3/8	0.336 0.375
ER32-13/32	0.367 0.406
ER32-7/16	0.398 0.437
ER32-15/32	0.429 0.468
ER32-1/2	0.461 0.500
ER32-17/32	0.492 0.531
ER32-9/16	0.523 0.562
ER32-19/32	0.554 0.593
ER32-5/8	0.586 0.625
ER32-21/32	0.617 0.656
ER32-11/16	0.648 0.687
ER32-23/32	0.679 0.718
ER32-3/4	0.711 0.750

### ▶ER40

规格 Spec	夹持范围 Range
ER40-1/8	0.086 0.125
ER40-5/32	0.117 0.156
ER40-3/16	0.148 0.187
ER40-7/32	0.179 0.218
ER40-1/4	0.211 0.250
ER40-9/32	0.242 0.281
ER40-5/16	0.283 0.312
ER40-11/32	0.304 0.343
ER40-3/8	0.336 0.375
ER40-13/32	0.367 0.406

### ▶ER40

规格 Spec	夹持范围 Range
ER40-7/16	0.398 0.437
ER40-15/32	0.429 0.468
ER40-1/2	0.461 0.500
ER40-17/32	0.492 0.531
ER40-9/16	0.523 0.562
ER40-19/32	0.554 0.593
ER40-5/8	0.586 0.625
ER40-21/32	0.617 0.656
ER40-11/16	0.648 0.687
ER40-23/32	0.679 0.718
ER40-3/4	0.711 0.750
ER40-7/8	0.836 0.875
ER40-1	0.961 1.00

### ▶ER50

规格 Spec	夹持范围 Range
ER50-7/32	0.179 0.219
ER50-1/4	0.211 0.250
ER50-5/16	0.273 0.313
ER50-11/32	0.304 0.344
ER50-3/8	0.336 0.375
ER50-7/16	0.359 0.438
ER50-17/32	0.453 0.531
ER50-5/8	0.546 0.625
ER50-11/16	0.609 0.688
ER50-25/32	0.703 0.781
ER50-27/32	0.765 0.844
ER50-15/16	0.859 0.938
ER50-1	0.921 1.000
ER50-1-3/32	1.015 1.094
ER50-1-3/16	1.109 1.188
ER50-1-1/4	1.171 1.250
ER50-1-5/16	1.234 1.313



7. 承接非标订做  
OEM Service available

数控车床各类高精度主轴(CNC lathe various types of main axle)



气动夹头锥套  
(PNEUMATIC CHUCK SLEEVE)

本产品主要用于超精密气动主轴夹座。本品具有精度高(跳动 $\leq 0.001$ )，重复定位精度高好等特点。主要用于PCB钻针检测，精密刀具检测、薄壁件、脆弱件的精密定位夹持等。



高精度机床主轴  
High precision machine main axle

西铁城L16主轴，承接数控车床主轴设计、生产；精度及耐用度与进口产品媲美。



所有T-ONE导套、尾部螺纹一律采用螺纹磨床精密磨削而成。由于磨削螺纹也是采用两端中心孔为工艺基准，保证了与导套定位圆柱面及定位锥面磨削工艺基准的统一性，与传统的车削螺纹相比，具有更好的同轴度和螺纹精度。来图来样可设计、生产：各类高精度、高品质夹头、导套；各类机床高精度主轴。

7. 承接非标订做  
OEM Service available

持续不懈的追求技术创新 (A hot Pursuit Of Creativity in Technology Development)



导套锥套  
GUIDE BUSH & TAPER SLEEVE



非标夹头  
Nonstandard collet



送料夹、双头、单头延长杆  
Feed chuck double ended, single ended rod

在开发新技术方面，我们始终坚持不断地投入资源和提升创新能力。各种各样的弹性夹头、钻头可供您选择，我们将设计和生产您的订单，即使是一块。Our creative resources are always being put to maximum use in developing new technologies. Great variety of collet chucks for drills are available for your choice, finger chuck, drill & tap holders, We will design and manufacture to your order for even a single piece.

我们可以为您的夹头、导套提供再加工和维修。  
We offer to regrind or repair your collet chucks and chuck guide bush.